



GENUINE PARTS • ACCESSORIES • RIDING GEAR



INTRODUCING SEA-DOO® SPARK™ LIFESTYLE

For 2014, Sea-Doo is introducing a new PWC, the Sea-Doo Spark, a fun new way for your family to play on the water. This unique PWC experience features a compact and lightweight design that makes it fun to ride and manoeuvre, simple to own and easy to tow.

Check out our wide range of accessories and customisation options, plus our new Rec Lite riding gear collection, made to match the Sea-Doo Spark perfectly, and our colourful sportswear collection, designed in the same spirit. Now there's nothing holding you back. With the new Sea-Doo Spark matching accessories and riding gear collection, your family's turn to join the fun has arrived.





WATCH

the NEW Sea-Doo Spark Collection
in action: sea-doo.com



THE FUN LASTS LONGER WHEN **SAFETY** IS IN THE DRIVER'S SEAT.

When you're the driver of a personal watercraft, you need to take your passengers' safety personally.

As the "captain," you are not only responsible for adhering to the safety rules for personal watercraft use, but also for ensuring your passengers are wearing the appropriate protective equipment and riding gear.

First of all, you and your passengers are required to wear an approved personal flotation device (PFD) certified for use with a personal watercraft.

Also, a wetsuit and/or neoprene bottoms will provide adequate protection for the lower part of the body. You can suffer severe internal injuries if water is forced into a lower body cavity as a result of falling into the water or being near the jet thrust nozzle. Remember that normal swimwear cannot protect appropriately against forceful water entry.

Finally, extra protective equipment such as footwear, gloves and goggles is also recommended. The fun lasts longer when safety is in the driver's seat.

You can find all these items at an authorised Sea-Doo dealer.

WE PUT TOGETHER A TEAM OF RIDERS LIKE YOU.

THEN WE TURNED THEM LOOSE TO PUT OUR **2014** RIDING GEAR AND ACCESSORIES THROUGH THEIR PACES.



MATT RITTER



CORRIE WASSUM



TOMMY BISHOP-STRAHLO



HEATHER TUNING HAMMEN



MARK QUAVILLON



KENLEE MCVAY



JAYDEN HAMMEN



MILLIE GAUTHIER



DIANE MARIE DOLAN



ROBERT GRESHAM

LEARN MORE AT A GLANCE

Look for these icons throughout the catalogue to learn more about key products:



NEW
New item for 2014.



INNOVATION
An item BRP pioneered that takes your ride to the next level.



DID YOU KNOW
An interesting tidbit about an item beyond the product description.

For advertising purposes, some scenes depicted in this brochure include professional riders and operators executing manoeuvres under ideal and / or controlled conditions. Do not attempt any of these or any other risky manoeuvres if they're beyond your level of riding ability, as well as your understanding and respect for the performance of your Sea-Doo watercraft or boat. RIDE SMART FROM THE START. Always ride responsibly and safely. Follow all instructional and safety materials. BRP recommends a minimum age of 16 for riding a watercraft. Users must always respect any applicable law establishing a minimum age for riding a watercraft. Always wear appropriate protective clothing for your type of boating use, including a Coast Guard-approved personal flotation device. Always remember that riding and alcohol / drugs do not mix. Operate your craft at a safe distance from others. Always observe applicable local laws and regulations. Because of its on-going commitment to product quality and innovation, BRP reserves the right to discontinue or change specifications, price, design, features, models or equipment at any time without incurring any obligations. Some models depicted herein may include optional equipment. Prices are based on Manufacturer Suggested Retail Prices. Dealers may sell for a different price. Taxes not included. Depending on location, products are distributed by BRP European Distribution SA, BRP US Inc., BRP Australia Pty Ltd. or Bombardier Recreational Products Inc. Some models depicted may not be available in all countries and / or regions. ®, ™ and the BRP logo are registered trademarks of Bombardier Recreational Products Inc. or its affiliates. *Trademark of Bombardier Inc., used under licence. †Velcro is a registered trademark of Velcro Industries. Clarino is a trademark of Kuraray Co. Ltd. Lycra is a trademark of E.I. DuPont de Nemours & Co. GTX is a registered trademark of Castrol Limited, used under licence. Garmin is a registered trademark of Garmin Ltd. NGK is a registered trademark of NGK Spark Plugs, Ltd. YUASA is a registered trademark of YUASA Batteries Inc. All other company and / or product names are trademarks of their respective holders. © 2013 Bombardier Recreational Products Inc. All rights reserved.



KATHY TOMES



ASHLEY SPOUGLE

AND NOW MEET THE
PROFESSIONALS WHO
HAVE CHOSEN TO LIVE
AND EXPERIENCE THE
SEA-DOO RANGE.



KEVIN WASSUM
Ultimate Sea-Doo Fan and rookie racer



ANGIE BISHOP-STRAHLO



JOSH ZENTMEYER



BEN HORAN
Pro wakeskater



JESSE BURLEW



KALE CARTNER



ROBERT GAUTHIER



EMMA JORDAN PHILLIPS



JEREMY SCHANDELMAYER
Professional watercraft racer

2014

RIDING GEAR

PFDs, WETSUITS & RASHGUARDS

- | | |
|--------------------|----------------|
| 4 Rec Lite | 16 Luxury |
| 8 Recreation | 18 Performance |
| 10 Children's wear | 22 PFDs Chart |
| 12 Tow Sports | |

- | |
|-------------------|
| 23 Sizing Chart |
| 24 Technical Gear |
| 28 Sportswear |

ACCESSORIES

- 34 Accessories
- 37 Attitude Graphic Kits
- 48 Customise your Sea-Doo Spark™
- 49 Build your own Sea-Doo Spark

PARTS

- 50 Parts
- 54 XPS Engine Oils & Maintenance Products

SPECIAL FEATURES

- 15 Ben Horan Profile
- 20 James Bushell Profile



SPARK LIFESTYLE

Look for the Splash icon
throughout the brochure, and
locate the Sea-Doo Spark items.

“4th July, 9:30 am, water temperature perfect. On the dock with my best friends preparing to slip into our Sea-Doo gear and enjoy one of our favourite days.”

— Tommy Bishop-Strahlo



WATCH the team wear the **NEW Vibe Collection:**
sea-doo.com





"This suit fits snugly and keeps your core warm while allowing you to move freely."

— Kevin Wassum



The new watercraft-specific Vibe wetsuit features a front entry and zip that facilitates closing the suit easily, eliminating the hard to reach, rear surf-style zip cord.



The Sea-Doo Vibe PFD has an integrated D-ring below the centre back neckline to attach a goggle lanyard.



MEN'S VIBE PFD

285810 (US) • S, M, L, XL, 2XL • Grey (09), Orange (12)
285814 (EUR) • S, M, L, XL, 2XL • Grey (09), Orange (12)

LADIES' VIBE PFD

285811 (US) • S, M, L, XL, 2XL • Grey (09), Pink (36)
285815 (EUR) • S, M, L, XL, 2XL • Grey (09), Pink (36)



VIBE PFD

Constructed with a super-duty nylon outer shell, polyethylene foam inserts and 4 woven straps with quick-release buckles. Design features include large armholes for unrestricted movement, reinforced seams with vinyl piping, a D-ring for a floating lanyard, plus a D-ring on back of neck for goggle-to-PFD attachment cord.



VIBE WETSUIT

Short wetsuit made of 2 mm neoprene and 4-way stretch fabric underarm, sleeves, lumbar, crotch and collar for more flexibility. Features a waterproof pouch on right leg. Mock turtleneck collar design with horizontal opening zip. Rubberised front panel for watersport versatility.



MEN'S VIBE WETSUIT

286422 (US) • S, M, L, XL, 2XL, 3XL • Grey (09), Orange (12)

LADIES' VIBE WETSUIT

286423 (US) • 6, 8, 10, 12, 14 • Grey (09), Pink (36)



Neoprene shorts can be worn under boardshorts or over a bathing suit for added protection.



MEN'S VIBE LS RASHGUARD
286419 • S, M, L, XL, 2XL, 3XL • Grey (09), Orange (12)



MEN'S VIBE SS RASHGUARD
286418 • S, M, L, XL, 2XL, 3XL • Grey (09), Orange (12)



MEN'S NEOPRENE SHORT
Made with 2 mm neoprene, plus an elastic waist with drawstring closure.
286442 • S, M, L, XL, 2XL, 3XL • Black (90)



MEN'S VIBE RASHGUARD

Offers SPF 50 UV-protection. Mock turtleneck collar design with boardshort connector. 170 g (6 oz.) Nylon/Spandex.



"I wear my rashguard on a hot sunny day because protection from the sun is important."

— Corrie Wassum



Sea-Doo rashguards provide sun protection equivalent to SPF 50 UV.



LADIES' VIBE LS RASHGUARD
286421 • XS, S, M, L, XL, 2XL • Grey (09), Pink (36)



LADIES' VIBE SS RASHGUARD
286420 • XS, S, M, L, XL, 2XL • Grey (09), Pink (36)



LADIES' NEOPRENE SHORT
Made with 2 mm neoprene, reinforced crotch stitching, plus an elastic waist with drawstring closure.
286443 • S, M, L, XL • Black (90)



LADIES' VIBE RASHGUARD

Mock turtleneck collar design with boardshort connector. 170 g (6 oz.) Nylon/Spandex.



“Your riding gear shouldn’t slow you down when getting on the water. Riding gear that’s easy to get into and out of makes the day on the water more fun.”

— Matt Ritter



MEN'S MOTION PFD

285833 (US) • S, M, L, XL, 2XL, 3XL • Red (30), Green (70), 4XL • Red (30)
285835 (EUR) • S, M, L, XL, 2XL, 3XL • Red (30), Green (70), 4XL • Red (30)

LADIES' MOTION PFD

285836 (US) • XS, S, M, L, XL, 2XL • Red (30), Green (70), 3XL, 4XL • Red (30)
255838 (EUR) • XS, S, M, L, XL, 2XL • Red (30), Green (70), 3XL • Red (30)

MOTION PFD

Super-duty nylon outer shell. Combination of PVC and polyethylene foam inserts. 4 woven straps with quick release buckles. Reinforced seams with vinyl piping. Large armholes for riding comfort. D-ring for lanyard connection and on back of neck for goggle-to-PFD attachment cord.





MEN'S SANDSEA SPRINGSUIT
286446 • S, M, L, XL • Red (30), Green (70)

LADIES' SANDSEA SPRINGSUIT
286447 • 6, 8, 10, 12, 14 • Red (30), Green (70)

SANDSEA SPRINGSUIT

Shorty wetsuit designed specifically for watercrafting. Back zip stash pocket on right leg features a waterproof pouch. Constructed of 2 mm neoprene with underarm and lumbar stretch panels for more flexibility, rubberised front panel for grip and watersport versatility. Smoothskin seals on legs, arms and neck, including an adjustable Velcro® collar.



NAVIGATOR PFD

Value-built PFD. Constructed with super-duty nylon outer shell, polyethylene foam inserts and 4 woven straps with quick-release buckles, this PFD delivers at a great price. Design details include large armholes, D-ring for lanyard connection and at back of neck for goggle-to-PFD attachment cord.

285848 (US) • XS, S/M, L/XL, 2XL/3XL, 4XL/6XL • Hi-Vis Yellow (26), Black (90)
285850 (EUR) • XS, S/M, L/XL, 2XL/3XL • Hi-Vis Yellow (26), Black (90)



“Kids deserve to have gear specifically made for them. Their fit is different than adults and it’s important that their gear provides proper safety and protection.”

— Heather Tuning Hammen





JR. FREEWAVE PFD

Ultra-durable neoprene outer shell and lining. Combination of PVC & polyethylene foam inserts. 2 woven straps with quick-release buckles. Strategically-placed mesh drain panels. Large armholes for comfort. Heavy-duty front zip. Split tail comfort design. D-ring for your floating lanyard.

285828 (US) • One size (weight 22.7-40.8 kg [50-90 lb.]) orange (12), Red (30), Green (70)

This style is not available in Europe.



KIDS' SANDSEA PFD

Built to take the all-day abuse a kid can deliver. Constructed with a super-duty nylon outer shell, polyethylene foam inserts and 3 woven straps with quick-release buckles. Armholes are big for comfort.

285839 (US) • S (0-13.6 kg [0-30 lb.]), M (13.6-22.7 kg [30-50 lb.]), L (22.7-40.8 kg [50-90 lb.]) Hi-Vis Yellow (26)

285841 (EUR) • S (0-13.6 kg [0-30 lb.]), M (13.6-22.7 kg [30-50 lb.]), L (22.7-40.8 kg [50-90 lb.]) Hi-Vis Yellow (26)



YOUTH SANDSEA SPRINGSUIT

Shorty wetsuit. Constructed of 2 mm neoprene with underarm and lumbar stretch panels for more flexibility, rubberised front panel for grip and watersport versatility. Smoothskin seals on legs, arms and neck, including an adjustable Velcro collar.

286448 • 8, 10, 12, 14 • Red (30), Green (70)



YOUTH RASHGUARD

Lightweight, cool protection for even the hottest days. SPF 50 UV sun protection from the 170 g (6 oz.) Nylon/Spandex materials. Mock turtleneck design.

286440 • 6, 8, 10, 12, 14 • White (01)

TOW SPORTS

“Wakeskating is about self expression, so it’s important that everything you wear is comfortable and moves with you. The more comfortable you are, the more you’ll want to ride.”

— Ben Horan





Back

MEN'S FREEWAVE PFD

285822 (US) • S, M, L, XL, 2XL • Orange (12), Black (90), 3XL • Black (90)

285824 (EUR) • S, M, L, XL, 2XL • Orange (12), Black (90)

LADIES' FREEWAVE PFD

285825 (US) • S, M, L, XL, 2XL • Black (90)

285827 (EUR) • S, M, L, 2XL • Black (90)

FREEWAVE

Ultra-durable neoprene outer shell and lining. Soft, bevelled PVC foam inserts. 2 woven straps with quick-release buckles. Strategically-placed mesh drain panels. Large armholes for riding comfort. Heavy-duty front zip. Split tail comfort design. D-ring for lanyard connection and on back of neck for goggle-to-PFD attachment cord.





“The gear you wear should be an expression of who and what you are.”
— Ashley Sponaugle



MEN'S RASHGUARD

Lightweight, cool protection for even the hottest days. SPF 50 UV sun protection from the 170 g (6 oz.) Nylon/Spandex materials. Mock turtleneck collar design also has a boardshort connector.

286438 • S, M, L, XL, 2XL • Green (70), Grey (09)



MEN'S NEOPRENE SHORT

Made with 2 mm neoprene, plus an elastic waist with drawstring closure.

286442 • S, M, L, XL, 2XL, 3XL • Black (90)



LADIES' RASHGUARD

Lightweight, cool protection for even the hottest days. SPF 50 UV sun protection from the 170 g (6 oz.) Nylon/Spandex materials. Mock turtleneck design also has a boardshort connector.

286459 • S, M, L, XL, 2XL • White (01)



LADIES' NEOPRENE SHORT

Made with 2 mm neoprene, reinforced crotch stitching, plus an elastic waist with drawstring closure.

286443 • S, M, L, XL • Black (90)

MOST DEFINITELY LIVING THE DREAM

At only 26 years of age, Ben Horan is at the top of the wakeskating world.

BEN HORAN

Professional Wakeskater

With countless video parts and contest wins to his credit, as well as a Wakeskater of the Year title and co-ownership of his own brand, Remote Wakeskates, Ben Horan is most definitely living the dream.

And he freely confirms Sea-Doo helped get him there. An owner long before he became a sponsored rider, a Sea-Doo was actually the very first purchase Horan made with his wages from a local skateboard shop. "The pros that I looked up to at the time, guys like Thomas Horrell and Aaron Reed, all used Sea-Doos," explains Horan. "I wanted to ride like them. That's honestly why I bought one."

It was a wise decision. Over the years that followed, that Sea-Doo combined with an abundance of natural talent and hard work helped push Horan to the top of the sport, and earned him the respect of both fans and peers.

"Ben is a grounded, humble human being who comes from an incredible family," says renowned sports photographer Josh Letchworth. "They are supportive of one another, eclectic by nature and go with the flow, all of which make up who Ben is as a person and how he approaches his wakeskating."

"His commitment to skateboarding most of his life obviously plays a huge role in his riding as well. Ben sees lines and tricks that many can't

visualise. He's calm, confident, sets his intention and has been rewarded greatly because of it."

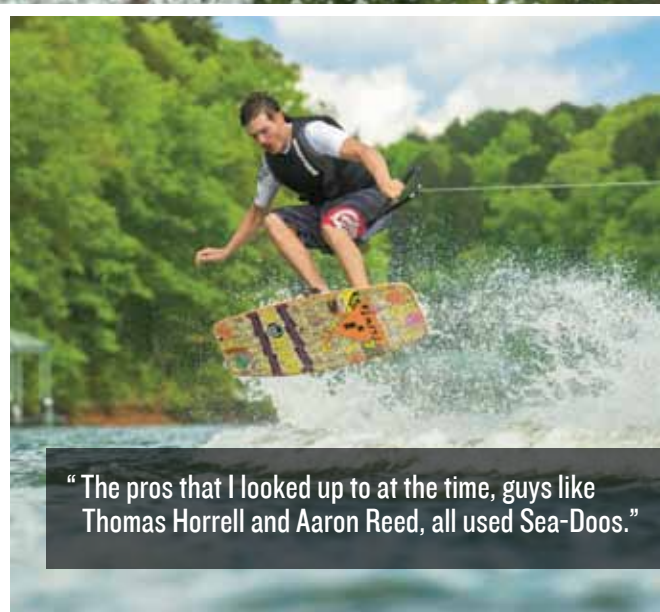
Though he's come a long way from that kid at the skate shop, Horan hasn't wavered in his choice of a Sea-Doo to get the job done. "It's just super user-friendly," he says of his preferred WAKE™ 155. "When I first got into wakeskating my girlfriend was driving me, my mum was driving me, and then I got my skater friends into it. They're super-easy to drive, and super fun to wakeskate behind. You get a ton of time on the water behind a Sea-Doo. They're just really awesome."

Horan also gives high marks to the WAKE's Ski Mode cruise control ("it's always the perfect speed"), the advantage of a tow pylon to keep the tow-rope out of the craft's jet wash, and Sea-Doo's renowned Intelligent Brake and Reverse. "When a rider falls in, most people do like a hot lap to get back," says Horan. "That just ruins the water, sending rollers down your line. With the brake you can stop and just turn right around, pick up the rider, and get back to business. It's so perfect."

Even the WAKE's wakes received praise. "It's a fun little roller to do tricks on. For beginners, that's the best way to learn board control, just hopping around on the wake and figuring it out."

"That's how I learned all my tricks."

"The pros that I looked up to at the time, guys like Thomas Horrell and Aaron Reed, all used Sea-Doos."



LUXURY



“When our family goes out for a full day of exploring on the water we want to be comfortable in our riding gear, and of course look good doing it.”

— Robert Gresham



The neoprene Airflow PFD provides cool weather protection while the EVA inner moulding keeps a pocket of air between the vest and the wetsuit for maximum comfort.



MEN'S AIRFLOW PFD
285830 (US) • S, M, L, XL, 2XL • Black (90)
285832 (EUR) • S, M, L, XL, 2XL • Black (90)



LADIES' AIRFLOW PFD
285853 (US) • S, M, L, XL, 2XL • Black (90)
285855 (EUR) • S, M, L, XL, 2XL • Black (90)



MEN'S DELUXE JACKET
286458 • S, M, L, XL, 2XL • Black (90)



LADIES' DELUXE JACKET
286445 • XS, S, M, L, XL, 2XL • Black (90)



MEN'S DELUXE WETSUIT
286457 • S, M, L, XL, 2XL • Black (90)



LADIES' DELUXE WETSUIT
286444 • 6, 8, 10, 12, 14 • Black (90)

AIRFLOW PFD

Eco-friendly. Softer, lighter, more durable vest interior, made from 100% PVC-free Biofoam. Ecoprene outer shell and lining. 2 woven straps with quick-release buckles. Heavy-duty front zip. D-ring for lanyard connection and on back of neck for goggle-to-PFD attachment cord.

DELUXE JACKET

Lightweight 1 mm neoprene jacket for use with the Deluxe Wetsuit or separately to take the chill off evening rides and cooler days. Luxury jacket features front zip. Front pockets with Velcro closures, underarm zip venting and reflective prints on the shaped sleeves on ladies' jacket.

DELUXE WETSUIT

Sleeveless 3/2 mm neoprene wetsuit. Built using stretch neoprene under the arms and side panels, plus articulated backs of knees for easy, unrestricted movement. Velcro shoulder closure for easy changing and textured inner knee pads for protection and grip.

PERFORMANCE



“You have to trust your equipment when you’re going into the first turn, and that includes your riding gear. The X-Team gear feels like a second skin that becomes a part of you and doesn’t slow you down.”





"Everybody has their own style and the X-Team line of gear is designed for the racer who wants to be seen on the water with enough options to build the perfect gear package."

— Jeremy Schandelmayer



The X-Team neoprene Riding Jacket can be worn over your PFD, providing greater comfort during bad weather riding.



FORCE PULLOVER PFD

Ultra durable neoprene outer shell and lining with soft PVC foam inserts for maximum comfort. Anatomical cut with large armholes and strategically-placed mesh drain panel for riding comfort. Heavy-duty side zip and two woven straps with quick-release buckles for easy ingress/egress. D-ring for lanyard connection and on back of neck for goggle-to-PFD attachment cord.

285819 (US) • XS/S, M, L, XL, 2XL/3XL • Yellow (10)
285821 (EUR) • S, M, L, XL, 2XL • Yellow (10)



MEN'S X-TEAM SPRINGSUIT

Shorty 2 mm neoprene wetsuit for those in-between weather days. Design features include stretch neoprene panels on the shoulder for easy movement, rubberised front panel for watersport versatility and a smoothskin collar with adjustable Velcro closure for more comfort. Store your items in the waterproof back pouch or the front leg zip pocket.

286434 • S, M, L, XL, 2XL • Yellow (10)



MEN'S X-TEAM NEOPRENE RIDING JACKET

Versatile 2 mm neoprene jacket that can be worn over a PFD or independently. Features include articulated inner elbow for easy bending, slit on back waist for comfortable seating, 2-way front zip, 2 front pockets and a plush lined hood.

286435 • M, L, XL, 2XL • Yellow (10)



MEN'S PERFORMANCE X-TEAM PULLOVER JACKET

High performance X-Team wetsuit pullover for use with or without sleeveless bottom. 3/2 mm neoprene has heavier material where it's needed and lighter where it's not. Features articulated elbows for easy bending and stretch neoprene underarms and side panels to move with your body.

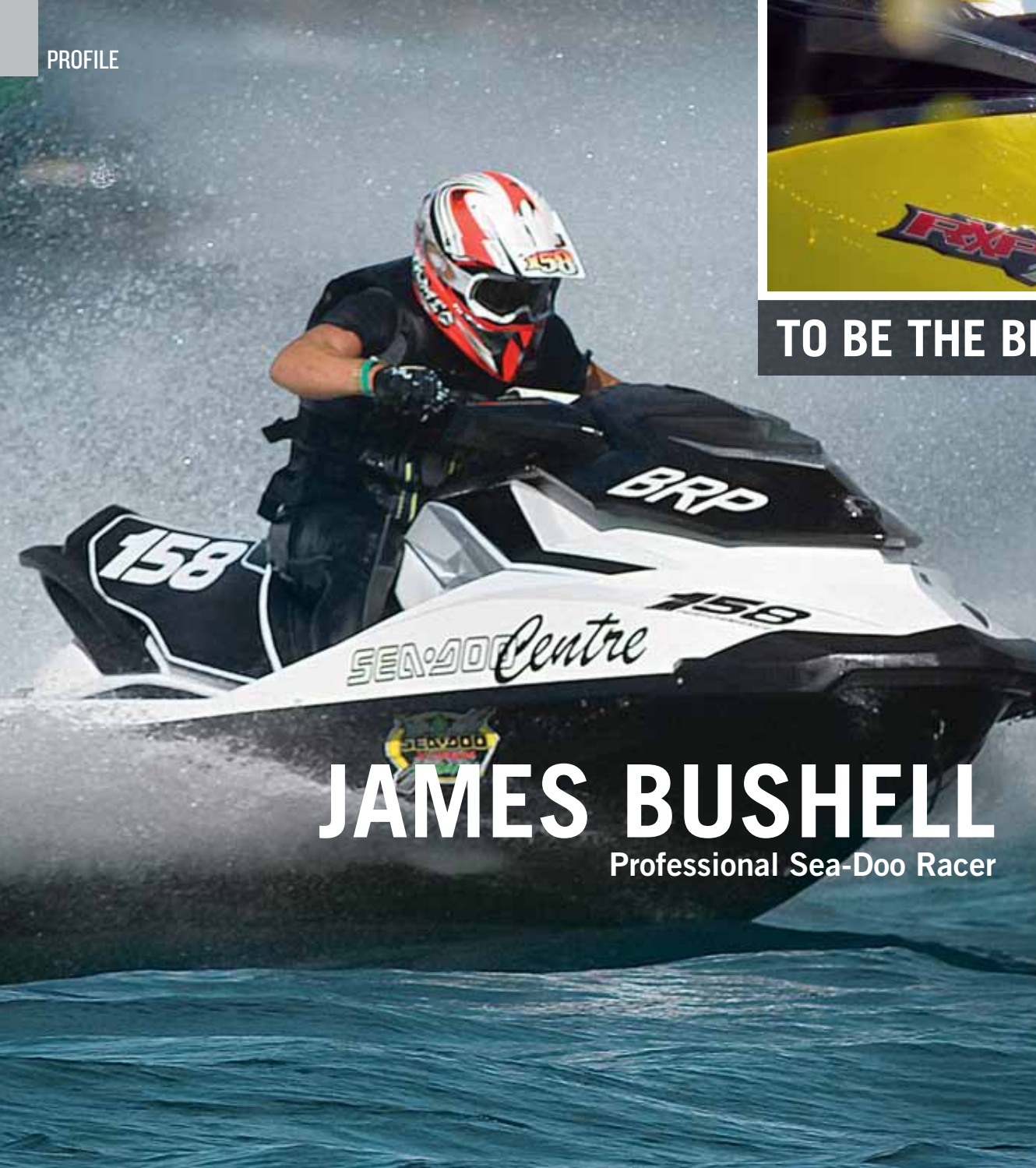
286437 • S, M, L, XL, 2XL • Yellow (10)



MEN'S PERFORMANCE X-TEAM WETSUIT

3/2 mm sleeveless wetsuit with heavier material where it's needed and lighter where it's not. Features include stretch neoprene under arms and articulated knees for easy movement, textured inner knees, back zip for getting in and out and rubberised front panel for grip and versatility.

286436 • S, M, L, XL, 2XL • Yellow (10)



"I just love racing. I love going down the start and grabbing the holeshot. You can't beat that feeling!"

TO BE THE BEST YOU HAVE TO USE THE BEST

Q Scores are used to measure the level of an athlete's popularity at any given moment. In the world of personal watercraft racing, it's safe to say no one's Q Score is currently higher than that of Sea-Doo X-Team member James Bushell.

Without question the rider to beat in Pro Runabout contests around the world. This athletic Briton, who looks like a model, has become the new face of Sea-Doo performance by riding his Sea-Doo RXP-X 260 RS to nine championships worldwide over the past three years. The highlights include a back-to-back, double-double — winning both the 2011 and 2012 IJSBA Pro Open and Pro GP World Championships.

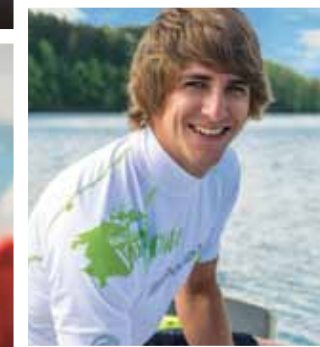
"I love riding the Sea-Doo RXP-X 260", says Bushell. "The handling is so superior to everything else on the track. I have won my fair share of championships in the past, but now with the RXP-X RS and the support of Les Cooke (head of Sea-Doo Centre and arguably the most renowned Sea-Doo watercraft racing tuner on the planet), our effort is at a different level. I can go to any race in the world and feel confident we are going to be at the front of the pack. It is a really fun time to be racing a Sea-Doo."

One of the most approachable big-name, professional-watercraft racers

in the paddock area, Bushell radiates a low-key, down-to-earth demeanour that is inviting to fans. But make no mistake, deep down resides a burning desire to win, and win everything — every single time he is on the water. "I love this sport, I love meeting different people around the world, but obviously the main goal is to win", he emphasises. "I just love racing. I love going down the start and grabbing the holeshot at 125 km/h (80 mph). You can't beat that feeling!"

Bushell has an added incentive to succeed. He's the director of his own UK-based BRP dealership, 158-Performance. "It's pretty cool to have a customer come into the store, or stop by our booth at the London Boat Show, and see a huge poster of me on the wall or in the brochure and ask, 'Is that you?' and be able to say 'yes.' They see me on the machine, they see me wearing the Sea-Doo Performance X-Team wetsuit, PFD, gloves, booties, everything. It's cool!"

And it certainly does a lot for one's Q Score.



CHOOSE THE RIGHT PFD FOR YOUR RIDING STYLE



VIBE

REC LITE

Offers dynamic full features in a rugged, durable nylon vest that fits in anywhere, any time.



MOTION

RECREATIONAL

Lightweight, excellent wear & flex fatigue resistance, low water absorption. Affordable, dependable all purpose PFD.



NAVIGATOR

Super-duty nylon outer shell. Affordable, dependable all purpose PFD.



KIDS' SANDSEA

Lightweight, low water absorption. Affordable, dependable all purpose PFD.



FREEWAVE

TOW SPORTS

A more fitted and technical PFD. Offers greater ease of movement, better comfort and more warmth.



JR. FREEWAVE

RECREATIONAL

Offers greater ease of movement, better comfort and more warmth.



FORCE

PERFORMANCE

Offers warmth, a better fit, more comfort and greater ease of movement. For riders looking for a more technical and fitted PFD.



AIRFLOW

LUXURY

Ecoprene: the advantages of neoprene with optimum protection. 30% lighter than standard neoprene PFDs. Dries faster, takes in less water and stays much cooler than neoprene.

Outer shell	Super-duty nylon				Ultra-durable neoprene			Ecoprene
Colours available	Men's: Grey (09), Orange (12) Ladies': Grey (09), Pink (36)	Men's: Red (30), Green (70) Ladies': Red (30), Green (70)	Hi-Vis Yellow (26), Black (90)	Hi-Vis Yellow (26)	Men's: Orange (12), Black (90) Ladies': Black (90)	Red (30), Green (70)	Yellow (10)	Men's: Black (90) Ladies': Black (90)
Lightweight	●●●	●●●	●●●	●●●	●	●	●	●●
Quick-dry	●●●	●●●	●●●	●●●	●	●	●	●●●
UV-tested fabric	Yes	Yes	Yes	Yes	Yes	Yes	Yes	Yes
Insert / Interior	Combination of PVC and polyethylene foam (light, supple, comfortable, higher buoyancy)	Combination of PVC and polyethylene foam (light, supple, comfortable, higher buoyancy)	Polyethylene foam	Combination of PVC and polyethylene foam (light, supple, comfortable, higher buoyancy)	Soft, bevelled PVC foam (supple, comfortable, higher buoyancy)	Soft, bevelled PVC foam (supple, comfortable, higher buoyancy)	Soft PVC foam (supple, comfortable, higher buoyancy)	Eco-friendly 100% PCV-free Biofoam (lighter, more supple, more durable)
Mesh drain panels (Evacuate water to lighten the PFD when wet)	No	No	No	No	Yes	Yes	Yes	Yes
Large armholes (Better comfort / ease of movement)	Yes	Yes	Yes	Yes	Yes	Yes	No	Yes
Woven straps (Better comfort and adjustments)	Men's: 4 Ladies': 4	Men's: 4 Ladies': 4	4	0 – 30 lb: 2 30 – 50 lb: 3 50 – 90 lb: 3	2	2	2	2
Quick-release buckle	Yes	Yes	Yes	Yes	Yes	Yes	Yes	Yes
Heavy-duty zip	N/A	N/A	N/A	N/A	Yes	Yes	Yes	Yes
Loop at the back of neck	Yes	Yes	Yes	No	Yes	No	Yes	Yes
D-ring for lanyard	Yes	Yes	Yes	N/A	Yes	N/A	Yes	Yes
Special features	• Seat contour system for increased comfort while seated.	• Seat contour system for increased comfort while seated.			• Split tail comfort design		• Anatomically cut	• Dries faster, absorbs less water and stays much cooler than neoprene

Some models, accessories and equipment depicted may not be available in your country. Please contact your BRP dealer for more information.



These charts show body measurements. Be sure to measure yourself to find the accurate size.

HOW TO MEASURE

For best results, ask someone else to take measurements. Measure body in swimsuit or underwear. Tape must be snug but not tight. If measurements fall between two sizes, order the larger size.

HEIGHT

Stand with back straight without shoes: measure from the top of head to the floor.

CHEST

Measure under your arms, around the fullest part of your chest.

WAIST

Measure around your natural waistline, keeping one finger between the tape and body.

HIPS

Stand with legs together, measure around the fullest part of hips, ensuring the tape is level.

PFDs

Men's Motion / Vibe

SIZE	XS	S	M	L	XL	2XL	3XL	4XL
Chest (cm)	76-84	84-94	94-104	104-114	114-124	124-135	135-145	145-155

Ladies' Motion / Vibe

SIZE	XS	S	M	L	XL	2XL	3XL	4XL
Chest (cm)	76-84	84-94	94-104	104-114	114-124	124-135	135-145	145-155

Navigator

SIZE	XS	S/M	L/XL	2XL/3XL	4XL/6XL
Chest (cm)	71-81	81-102	102-132	127-152	155-168

Men's Freewave

SIZE	S	M	L	XL	2XL	3XL
Chest (cm)	84-94	94-104	104-114	114-124	124-135	135-145

Men's Airflow

SIZE	S	M	L	XL	2XL
Chest (cm)	84-94	94-104	104-114	114-124	124-135

Ladies' Freewave / Airflow

SIZE	S	M	L	XL	2XL
Chest (cm)	76-84	84-91	91-99	99-107	107-114

Force

SIZE	XS/S	M	L	XL	2XL/3XL
Chest (cm)	86-91	94-99	99-104	104-109	112-119

Jr. Freewave

SIZE	OS
Weight (kg)	63.5-74

Kids' Sandsea

SIZE	S	M	L
Weight (kg)	0-14	14-23	23-41

WETSUITS

Men's

SIZE	S	M	L	XL	2XL	3XL
Height	1.68-1.73	1.73-1.80	1.80-1.88	1.83-1.90	1.83-1.93	1.83-1.93
Weight (kg)	59-68	68-79	79-91	88-100	98-107	107-116

Ladies'

SIZE	6	8	10	12	14
Height	1.57-1.63	1.63-1.70	1.68-1.75	1.70-1.78	1.73-1.78
Weight (kg)	50-52	54-59	59-64	64-68	68-73

Kids

SIZE	6	8	10	12	14
Height	1.19-1.37	1.37-1.42	1.42-1.47	1.47-1.52	1.52-1.60
Weight (kg)	23	27	32	36	41

GLOVES (MEASURE PALM WIDTH)

SIZE	XS	S	M	L	XL	2XL	3XL
cm	7.6	8.3	9	10	11.4	13	14

What code represents your size?

- Find your size
- The corresponding code is THE CODE you use to complete the part number on your order. Example: 440227_90 Size: M = code "06", therefore 4402270690

Order Chart

SIZE CODE	ONE SIZE	XS	S	M	L	XL	2XL	3XL	4XL	XS/S	S/M	L/XL	2XL/3XL										
	00	02	04	06	09	12	14	16	18	90	72	73	74										
SIZE CODE	4	6	7	8	9	10	11	12	14	26	28	30	32	34	36	38	40	42	42	43	0-30	30-50	50-90
	23	25	27	28	29	30	31	32	34	89	36	37	38	39	40	41	42	43	60	62	64		

SPORTSWEAR

Men's Tops

SIZE	S	M	L	XL	2XL	3XL
Chest (cm)	91-97	99-104	107-112	117-122	127-132	137-142
Waist (cm)	76-79	84-89	91-97	104-109	114-122	127-132
Arm length (cm)	84	84	86	86	89	89

Men's Technical Boardshorts

SIZE	28	30	32	34	36	38	40	42
Waist (cm)	71-76	76-81	81-86	86-91	91-97	97-102	104-107	107-112
Hips (cm)	84-89	89-94	94-99	99-104	104-109	109-114	114-119	119-124

Ladies' Tops / Dress

SIZE	XS	S	M	L	XL	2XL
Chest (cm)	83-85	88-90	93-97	100-104	109-116	119-126
Waist (cm)	62-65	67-70	72-76	80-84	89-94	99-104
Low hips (cm)	88-90	93-95	98-102	105-109	114-119	124-130
Arm length (cm)	74	76	79	81	81	81

Ladies' Technical Boardshorts

SIZE	4	6	8	10	12	14
Waist (cm)	61-66	66-71	71-76	76-81	81-86	86-91
Hips (cm)	86-91	91-97	97-102	102-107	107-112	112-117



The Vehicle Gloves feature touch-screen technology that allows smart device screens to be operated.



FULL-FINGER VEHICLE GLOVES

Full gloves with Touchscreen technology on index fingers and thumbs.

286450 • XS, S, M, L, XL, 2XL, 3XL
• Black (90)



SHORTY VEHICLE GLOVES

Webbed hands to make glove removal easy.

286449 • XS, S, M, L, XL, 2XL, 3XL
• Black (90)



ATTITUDE FULL-FINGER GLOVES

286354 • XS, S, M, L, XL, 2XL, 3XL • Yellow (10), Orange (12), Black (90)



The Attitude Shorty Gloves features rubberised Pro-Grip material on the thumb and palm, providing maximum grip when wet or dry.



ATTITUDE SHORTY GLOVES

Webbed hands to make glove removal easy.

286355 • XS, S, M, L, XL, 2XL, 3XL • Yellow (10), Orange (12), Black (90)



VEHICLE GLOVES

Get a grip with gloves designed specifically for watercrafting. Featuring materials and designs to match different environments, styles or use. Features neoprene on top, Spandex gussets and adjustable Velcro wrist straps. Mesh panels for comfort plus double stitching in high-stress areas for durability. Clarino Nash palm material with holes and rubberised Pro Grip ensure a solid hold. 45% Clarino Nash, 45% Polyester, 5% Neoprene, 5% Material Grip



ATTITUDE GLOVES

Nylon gloves with Spandex gussets and mesh panels for comfort, plus double stitching in high-stress areas for durability. Clarino[®] Nash palm material and rubberised Pro Grip on thumb and palm to ensure a solid hold. Adjustable Velcro wrist straps. 49% Polyester, 45% Clarino Nash, 5% Spandex, 1% PVC

Some models, accessories and equipment depicted may not be available in your country. Please contact your BRP dealer for more information.



SEA-DOO SANDALS

Fashionable sandals with lightweight and comfortable design. Rubber insert in sole for anti-slip performance. Moulded feet area.

444188 (US) • 7, 8, 9, 10, 11, 12 • Black (90)

444188 (EUR) • 41, 42, 43, 44, 45, 46 • Black (90)



SEA-DOO RIDING BOOTS

High cut neoprene boot for added comfort, grip and protection. Neoprene interior adds comfort and protection, while the mesh flow-through panels allow water to drain quickly. Naturally shaped, moulded sole with arch support provides maximum comfort and grip. Fast and easy quick lace system includes lace storage pocket. Includes adjustable Velcro strap for a better fit on the ankle.

285807 (US) • 6, 7, 8, 9, 10, 11, 12 • Black (90)

285807 (EUR) • 40, 41, 42, 43, 44, 45, 46 • Black (90)

Removable
neoprene ankle
protectors



SEA-DOO WATER SHOES

Attractive and trendy look in a lightweight design made of EVA with TPU support. Features include easy one-hand side lace system and mesh fabric for quick draining. Perforated sole for water evacuation with rubber insert outsole for anti-slip performance.

444184 (US) • 7, 8, 9, 10, 11, 12 • Black (90)

444184 (EUR) • 41, 42, 43, 44, 45, 46 • Black (90)



“The goggle-to-PFD cord is very convenient and ensures you always know where your goggles are. I can’t imagine how many pairs of sunglasses are on the bottom of the lakes.”

— Tommy Bishop-Strahlo



SEA-DOO AMPHIBIOUS RIDING GOGGLES

Super-strong and ultra-lightweight goggles that float on the water. Aerodynamic design uses soft flexible frames that conform to the shape of any face while offering 100% UV-protection. The suspended, anti-fog lenses are polarised and interchangeable. Also included: goggle-to-PFD attachment cord, hard case and pouch that doubles as cleaning cloth.

447723 • One size • Black with graphics (94)



AMPHIBIOUS GOGGLES POLARISED REPLACEMENT LENS

447791 • One size • Grey (09), Amber (95)



AMPHIBIOUS GOGGLES CLEAR REPLACEMENT LENS

447792 • One size • Clear (00)



SEA-DOO RIDING GOGGLES

Specially designed for watercraft applications to give the best eye protection available. Feature revolutionary patented hypo-allergenic silicone seal offering the finest anti-fog solution plus mirrored, scratch-resistant and adjustable band.

Package includes goggle-to-PFD attachment cord, branded storage hard case, with pouch that also doubles as a cleaning cloth.

447462 • One size • White (01), Yellow (10), Orange (12), Black (90)



SEA-DOO DRY POUCH

1-litre volume, splash-proof protection for your small essentials. Made of lightweight material with a see-through TPU window and drybag style roll-down top with clips. Belt hook for easy carrying.

Note: Not intended to be immersed.

469540 • One size • Yellow (10)



The multi-functional Sea-Doo Duffel Bag is designed to carry everything for a day on the water, separating food and drinks in an insulated pocket and a waterproof compartment for wet items.



Side pocket cooler



Waterproof compartment



Mesh inner pocket

SEA-DOO DUFFEL BAG

Specially designed for day trips or extended outings. Made of durable polyester with segmented mesh inner pocket and key hook. Bag features two special pockets: one is waterproof, the other is a cooler. Comes with carry strap and shoulder protector.

Measures 60 x 30 x 30 cm (24 x 12 x 12 in.).

447731 • One size • Charcoal Grey (07)

SPORTSWEAR



"I don't have
to be on
the water
to live the
Sea-Doo life."

— Jesse Burlew





SPORTSWEAR



CHILL HOODIE

Pullover hoodie with large 2-zip pocket.

78% Cotton, 17% Polyester, 5% Spandex

286357 • S, M, L, XL, 2XL, 3XL • Charcoal Grey (07), Heather Grey (27), Blue (80)



Sleeve cuff with thumb-hole



POP TEE

Fitted V-neck t-shirt with silicone Sea-Doo logo print on left sleeve.

96% Cotton, 4% Spandex

286352 • S, M, L, XL, 2XL, 3XL • White (01), Heather Grey (27), Black (90)



MEN'S PULSE BOARDSHORTS

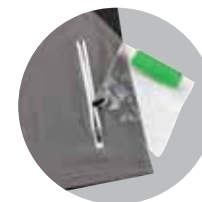
Technical boardshort with advanced 4-way stretch fabric that is ultralight and dries quickly. Functions well in water and looks great out. Features mesh lining, waist closure and reinforced crotch seams. Has 3 front pockets and waterproof pouch located inside zip pocket.

88% Polyester, 12% Spandex

286353 • 28, 30, 32, 34, 36, 38, 40 • Grey (09), Orange (12), Black (90)



The Pulse Boardshorts feature an integrated dry pouch inside the zipped pocket to keep essential small items dry.

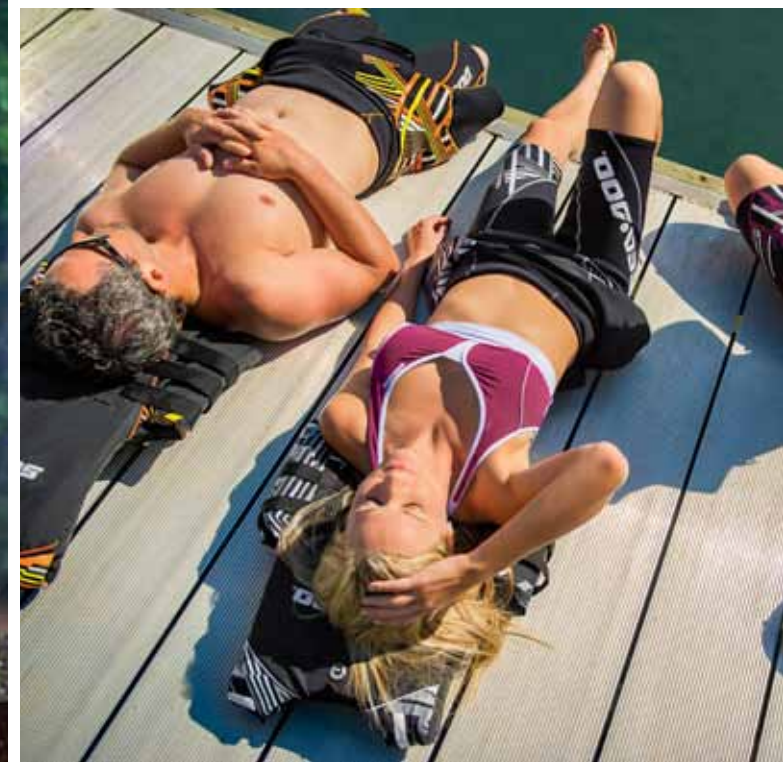


FREEDOM CAP

Print on left side of cap with woven Sea-Doo logo on the back. Inner elastic helps ensure a good fit.

97% Polyester, 3% Spandex

286351 • S/M, L/XL • Black (90)



The Splash Bikini Top offers three different adjustment points for maximum comfort on the water and off.



Back



SPLASH BIKINI TOP

Sport bikini top that offers good support with quick-dry foam in cup. Hook adjustment on centre back and on left side under mesh buckle.

57% Nylon, 31% Polyester, 12% Spandex

286359 • XS, S, M, L, XL, 2XL • Pink (36), Black (90)



LADIES' PULSE BOARDSHORTS

Fashionable boardshort with advanced 4-way stretch fabric that is ultra-light and dries quickly. Functions well in water and looks great out. Features mesh lining, snap waist closure. Has 2 pockets. Waterproof pouch is included to keep small items dry.

88% Polyester, 12% Spandex

286356 • 4, 6, 8, 10, 12, 14 • White (01), Black (90)



BREEZE DRESS

Summer dress with frill details around neckline and arms, plus an insert mesh on back yoke for comfort.

81% Cotton, 12% Spandex, 7% Nylon

286358 • XS, S, M, L, XL, 2XL • Charcoal Grey (07), Pink (36)

WEAR IT. LIVE IT. HAVE FUN IN IT.

EASY-BREEZY

There are many ways to rock the Sea-Doo Breeze Dress.

P. 30



P. 29

**TIME
TO
CHILL**
Electric
style and
colours.



SHORT AND SLEEK

Technical boardshorts
with the right casual look.

P. 29-33



The Classic Polo is made of bamboo fibre that actively promotes evaporation for cooling at the marina, office or golf course.



SEA-DOO CLASSIC POLO
3-button opening and silicone print logo.
78% Polyester, 22% Bamboo
286425 • S, M, L, XL, 2XL, 3XL • Grey (09)



SEA-DOO CLASSIC SHORTS
Technical boardshort for men with advanced 4-way stretch fabric that is ultra-light and dries quickly. Functions well in water and looks great out. Features mesh lining, hook closure, reinforced crotch seams, front zip pockets, plus rear and left front welt pockets with hidden Velcro closures.
88% Polyester, 12% Spandex
286433 • 28, 30, 32, 34, 36, 38, 40, 42 • Black (90)



SEA-DOO CLASSIC CAP
Lightweight adjustable cap that's perfect for summer use. Silicone Sea-Doo logo on right front, with metal adjuster on back.
100% Cotton
286430 • One size • White (01), Charcoal Grey (07)



SPIN CAP
Lightweight adjustable cap for summer weather. Woven logo on front, Sea-Doo logo on side, with metal adjuster on back.
100% Cotton
286431 • One size • Black (90)



ESCAPE TECHNICAL BOARDSHORTS
286428 • 28, 30, 32, 34, 36, 38, 40, 42 • Blue (80)



SPIRIT TECHNICAL BOARDSHORTS
286424 • 28, 30, 32, 34, 36, 38, 40, 42 • Mixed Colour (18)

Functional in the water, fashionable out. Constructed of ultra-light, quick-drying fabric that stretches 4 ways. Design features include mesh lining, removable lightweight stretch neoprene inner short, tie closure, pocket with hidden Velcro closure and reinforced crotch seams.

91% Polyester, 9% Spandex



ELEVATE TEE
100% Cotton
286432 • S, M, L, XL, 2XL, 3XL • White (01), Black (90)



VERTICAL TEE
100% Cotton
286427 • S, M, L, XL, 2XL, 3XL • White (01), Heather Grey (27), Red (30)



LADIES' SEA-DOO SIGNATURE TEE
Fitted V-neck t-shirt made of stretchable fabric with gathered side seams to highlight a feminine shape.
95% Cotton, 5% Spandex
286426 • XS, S, M, L, XL, 2XL • White (01), Raspberry (39)



The ladies' Jive Technical Boardshorts with stretch neoprene inner liner offer superior protection while riding. Liner can be removed for casual comfort.



LADIES' JIVE TECHNICAL BOARDSHORTS
Features include ultra-lightweight, quick-drying 4-way stretch fabric construction with mesh lining. Design includes snap waist closure, right front zip pocket and right rear welt pocket with hidden Velcro closure and embroidered Sea-Doo logo on back.
91% Polyester, 9% Spandex
286429 • 4, 6, 8, 10, 12, 14 • Black (90)

ACCESSORIES

A full line of accessories for the new Sea-Doo Spark allows you to make it your own. Various products have been developed in conjunction with bringing the Sea-Doo Spark to the water to add functionality and style, making it a watercraft like no other.





The Chill Shade is a versatile sun shade that was engineered to be mounted on the Sea-Doo Spark while moving on the water, or easily removed and set up on the beach, providing shade on the sunniest of days.



The Sea-Doo Spark transom step makes it easy to re-board from deep water after taking a swim or following a wake session. The Sea-Doo Step easily mounts on the transom and can be installed by any authorised Sea-Doo dealer in minutes.



CHILL SHADE

Don't go looking for shade - bring it with you. The innovative Chill Shade provides versatile protection both on the water and the beach. It can even be used at speeds up to 56 km/h (35 mph) when properly fixed. The system can be easily installed while out on the water and stores conveniently on a Sea-Doo Spark model. Made of colourful netting, it comes with 2 pouches that can be used as sand anchors on the beach.

Sea-Doo Spark
295100574



SNAP-IN FENDERS

Protect your investment with easy to install and remove fenders designed specifically for Sea-Doo watercraft. Pre-moulded holes front and rear on the Sea-Doo Spark models ensure a solid mount in the optimal spot. High-visibility red colour keeps them in sight. Sold in pairs. Patent pending. Requires Snap-in Fenders Installation Kit (295100550) to install on models other than Sea-Doo Spark.

Sea-Doo Spark
295100418



SNAP-IN FENDER INSTALLATION KIT (Not illustrated)

Installation kit for 2009 and up watercraft lets you enjoy the fastest, easiest way to install protective fenders on your watercraft.

295100550



SEA-DOO STEP

Convenient step with knee-friendly surface for deep water boarding. Installs easily on the right side of a watercraft and can hold up to 113 kg (250 lb.).

Sea-Doo Spark
295100494



CARGO NET

With a 4L (0.9 UK gallon) capacity, this cargo net keeps regularly used items in place. The mesh material allows water to drain out easily and air to circulate, perfect to stow your snap-in fenders, tow ropes or diving mask. An elastic cord allows you quick access, while keeping your items secured.

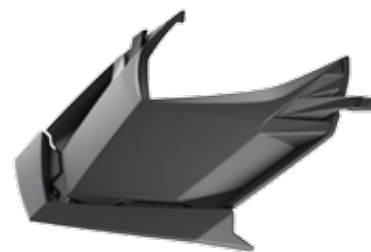
Sea-Doo Spark
295100559



FRONT STORAGE BIN KIT

Soft-sided design matches the contours of the Sea-Doo Spark model to maximise storage. Polyurethane construction protects items from rough waves and those spirited rides. Drain holes at bottom. Lid is included. Maximum storage capacity: 28 litres.

Sea-Doo Spark
295100504



FRONT DEFLECTOR LID KIT

Made of polypropylene, this deflector directs water away from the driver's feet and legs on those colder days, but removes quickly when things heat up.

Sea-Doo Spark
295100553

AVAILABLE
FEBRUARY
2014



MANUAL REVERSE KIT

Install a reverse lever on your non-iBR equipped Sea-Doo Spark. This kit can be easily added to your Sea-Doo Spark and will be a huge aid in docking manoeuvres and trailer loading. A lever on the left side makes it easy to engage reverse and avoid the need for aggressive or dangerous manoeuvres.

Sea-Doo Spark
295100596



GRIP MAT

Developed specifically for the Sea-Doo Spark, this EVA foam material grip mat ensures both comfort and traction as you play on the water. Allows re-boarding onto a cushioned platform while protecting it from wear and tear. Easy to install with the double sided tape attached to the mat.

Sea-Doo Spark
295100556



SIDE PROTECTOR

This 3-piece rubber formed protector is specifically designed for the Sea-Doo Spark. Its curves and angles follow the lines of the unit to enhance the look while protecting against small impacts and wear. Allows installation of the Snap-in Fenders and maintenance with no problems.

Sea-Doo Spark
295100575



GRIP MAT EXTENSION

Developed specifically for the 3up Sea-Doo Spark, this EVA foam material grip mat ensures both comfort and traction as you play on the water. Allows re-boarding onto a cushioned platform while protecting it from wear and tear. Easy to install with the double sided tape attached to the mat. For full protection on a 3up, add the Grip Mat (295100556).

Sea-Doo Spark
295100571

EXCLUSIVE ATTITUDE GRAPHIC KITS

11 DIFFERENT GRAPHIC KITS AVAILABLE IN 3 LEVELS OF CUSTOMISATION (LIGHT, MEDIUM OR FULLY WRAPPED), AND COLOUR OPTIONS FOR A TOTAL OF 60 COMBINATIONS.



Cubism Dream-Orange



BLACK SEA



RACING NUMBER - GREY



CUBISM DREAM



RAYS



FAR OUT



SUN SHADE



X RAY



CLASSIC



SUNBURST



TORN



LASER

Add a little attitude with graphic kits. These Sea-Doo exclusive Attitude Graphic Kits are the product of choice for avid Sea-Doo Spark riders. Whether you want to make your watercraft stand out from the crowd or give it a facelift, this is the product for you. Customising kits also available for more colour logo options. The digital print designs will not fade in sunlight and the vehicle wraps are designed to bond to "hard-to-stick" surfaces as well as low energy surfaces.

Sea-Doo Spark



If you want your Sea-Doo Spark to be as unique as your signature, visit www.scsseadoographics.com to see our full line-up of graphic kits.



280000555 / 280000617

A Sea-Doo storage cover is essential to ensure your Sea-Doo is protected from the elements and to maintain a fresh appearance. There's a perfectly fitting cover for every model in the line.



280000460*, 280000472*, 280000587*



280000461*



280000664



280000462*



280000596, 280000543



280000597



280000665



280000598



280000472



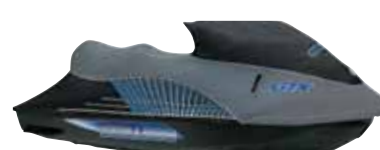
280000664



280000464*



280000369*



280000278*



280000555



280000617

COVERS

Complete and versatile line-up of watercraft covers. Solution-dyed fabric offers easy handling and increased UV-resistance. Strapless design provides easy installation. Patented air release vent system for trailering.

FITS	COLOURS	SKU
RXT iS 260 (2009 and up), GTX iS 215 (2010 and up), GTX LTD iS 260 (2009 and up)	Black / Light Grey	280000460
GTX 155/215, RXT-X 260, Int'l RXT-X 260 and RXT 260 (2010 and up), models without suspension GTX LTD 215 (2014)	Black / Light Grey	280000472
GTX-S 155 (2012)	Black / Light Grey	280000587
WAKE Pro 215 (2010 and up)	Black / Viper Red**	280000461
	Black	280000664
RXP & RXP-X (2004 - 2011)	Black / Mortar Grey	280000464
GTI & GTI SE (2006 - 2010), WAKE 155 (2009 - 2010)	Black / Light Grey	280000462
WAKE 215 (2007 - 2009)	Mortar Grey / Black	280000369
GTX, except LTD iS package (2007 - 2009)	Mortar Grey / Black	280000278
GTR 215 (2012 and up)	Black / Light Grey	280000596
RXP-X 260 (2012 and up)	Black / Light Grey	280000543
WAKE 155 (2011 and up)	Black / Viper Red**	280000597
	Black	280000665
GTI 130 (2011 and up), GTI SE 130 / 155 (2011 and up), GTS Rental (2011 and up), GTS (2011 and up)	Black / Light Grey	280000598
RXT-X aS	Black / Light Grey	280000586

SEA-DOO SPARK COVERS

Strapless design allows easy installation with solution-dyed fabric for increased UV-resistance. Features include patented air release vent system for trailering and interior pouch to store cover when not in use. Openings to accommodate the Speed Tie system and snap-in fenders while docked, plus one at the back for ski eye under the seat.



2up

Black



280000555



3up

Black



280000617

PWC COVER HOOK REPLACEMENT KIT

(Not illustrated)

Replacement sew-in attachment hooks. Hook under watercraft bumper. Set of 2.

All PWC covers

295100407

*Convenient openings for easy access to the Speed Tie mooring system. **Until stocks depleted.
Note: For previous model years, please ask your dealer for details.



295100466

SEA-DOO SPEED TIE

Fully-integrated watercraft mooring system, providing the ultimate in convenient, quick and secure docking. Snap-out plates front and rear on Spark models allow for easy installation and positioning of the Sea-Doo Speed Tie system. Stores 2.1 m (7 ft.) of rope and locks to desired length. Standard equipment on the GTX LTD iS. Sold in pairs.



Sea-Doo Spark
295100496

RXP-X (2012 and up)
295100466

**GTR (2012 and up), GTI, GTI SE and GTS (2011 and up),
GTX without suspension (2010 and up), WAKE Pro,
WAKE 155, RXT & RXT-X without suspension (2010 and up)**
295100422



295100496



The Sea-Doo Speed Tie makes docking easier than ever with seven feet of retractable dock lines at the helm and on the transom that effortlessly stows out of site. The Speed Tie system is a must-have accessory that frees up storage space and ensures you have a dock line at all times.

**GTX iS & RXT iS (2009 and up), RXT-X aS (2011 and up),
GTX-S 155 with suspension (2012)**
296000249

"The Speed Tie makes tying up so easy and fast. No more tangled dock lines, no more wet ropes on top of t-shirts in your storage. The dock lines are out of sight, out of mind until you need them."

— Jesse Burlew



WATCH how easily the Sea-Doo Speed Ties work!
sea-doo.com



SEA-DOO SPEED TIE FOR DOCK

Same exclusive mooring system available as a PWC accessory, adapted for dock mounting. Provides quick and secure mooring for all watercraft, eliminating excessive rope on deck. Bolts directly to dock, stores 2.1 m (7 ft.) of rope and locks to desired length. Sold individually.

295100336



DESS FLOATING SAFETY LANYARD

Replacement DESS lanyard for all models.

All models
278002199

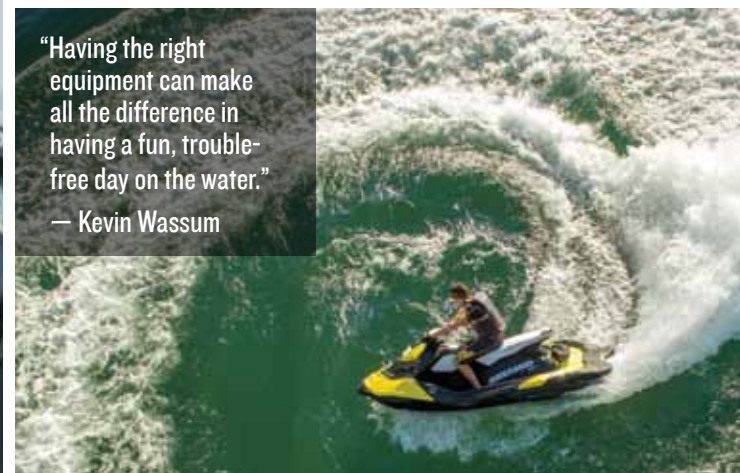
LEARNING KEY LANYARD

Reduce the speed of your boat and allow less experienced riders to learn gradually.

DI & 4-TEC Models
278002203



"Having the right equipment can make all the difference in having a fun, trouble-free day on the water."
— Kevin Wassum



MOORING LINE

Solid UV-protected, highly visible polypropylene buoyant rope.

3.7 m (12 ft.)
295100008 • Purple

6 m (20 ft.)
295100233 • White
295100231 • Blue

4.6 m (15 ft.)
295100060 • Yellow
295100240 • White
295100239 • Black
295100236 • Blue
269501288 • Twilight Blue
295100235 • Red



FENDER

Polyform strength and dependability with a vinyl valve system for quick, flexible adjustment of firmness. One fender and one rope per package. Fender ties included.

295100372 • White



TUBE TOW ROPE

White 15.2 m (50 ft.) heavy-duty tow rope.

All Boats and 3-seater PWCs
295100207



SANDBAG ANCHOR

600-denier polyester bag with up to 16 kg (35 lb) sand/rock capacity. 6.4 m (21 ft.) polypropylene cord. Stores easily and floats when empty. Measures 31.8 cm x 22.9 cm (12 1/2 x 9 in.).

295100211 • Yellow
295100212 • Blue

295500589 • Red
295100286 • Sand



DOCK TIE

Moor your boat with these floating Sea-Doo shock cushioned nylon ropes. Provides security and a little give to keep your watercraft and dock attached. One per package.

295100047



ANCHOR

5 kg (11 lb.) Fluke style anchor with slip ring provides sure grip.

295100046



ANCHOR PACKAGE

5 kg (11 lb.) folding anchor with storage bag to protect your watercraft.

295100343



THROW LINE BAG

Floating storage bag and 50' (15 m) of buoyant yellow rope. Throw line bags provide added safety.

295500832



ANCHOR

High performance Richter Anchor. Provides superior grip and easy retrieval. Holds all boats up to 22 ft. in length.

295100289



RETRACTABLE SKI PYLON

High-rise pylon keeps rope out of water for better watersport fun. Features built-in spotter grab handles and retracts out of the way when not in use.

RXT-X, GTX, RXT, except models with iS, GTI & GTS (2011 and up), GTR (2012 and up), GTX LTD (2014)
295100457

GTI (2006 - 2010)
(Not illustrated)
295100304



WAKEBOARD RACK

Specially designed to fit all Sea-Doo watercraft. Each rack holds one wakeboard while offering safe and easy board storage. Sold individually.

GTX with iS, RXT, RXT-X & Wake Pro (2010 and up), GTI & GTS (2011 and prior), GTR (2012 and up), GTX Ltd (2014)
295100453

GTI (2006 - 2010)
295501037



SHOCK TUBE

Protects passengers from ski rope kick-back and keeps ski ropes away from impellers. Durable nylon cover over closed-cell foam.

295100210 • Blue
295500597 • Red
295100287 • Sand
295100209 • Yellow



SKI EYE

Replaces existing U-ring for easy towing of skiers and tubes.

GTX, GTS, GTI, RXT, GTR & RXP-X (2012)
291002351



"You want to bring everything you need with you for a fun-filled day on the water. The BRP designers do a great job integrating practical Sea-Doo storage accessories."

— Jeremy Schandelmayer



SEA-DOO DRY POUCH

One litre splash-proof protection for your small essentials. Made of lightweight material with a see-through TPU window and drybag-style roll-down top with clips. Belt hook for easy carrying. **Note: Not intended to be immersed.**

4695400010 • Yellow



25L



10L

DRY BAGS

Watertight bags. Puncture-resistant PVC-coated polyester fibre material. Reinforced bottom. Available in 10L or 25L capacity.

269501744 • Black • 10L (2.2 UK gallons)

Includes a shoulder strap. Resistant polyester 420D with TPU-coating.

269001936 • Black • 25L (6 UK gallons)



STORAGE TRAY

Complete with moulded compartments for convenient storage of your watercraft safety kit, cooler and watertight foam insulated otter box. Also great for wallets, glasses and mobile phones. Netting provides secure storage for towels, clothing and sandals. Comes with a practical integrated carry handle.

GTX & RXT (2009 and prior), except models with iS
269501478



FRONT STORAGE TRAY

Optimises storage space on PWCs. 12L (2.9 UK gallon) capacity.

RXP-X (2012 and up), GTI & GTS (2011 and up), GTR (2012 and up), WAKE 155

295100583 • Grey



GLOVE BOX ORGANISER KIT

Kit includes glove box liner and semi-rigid splash-resistant portable case. Liner cushions the inside of the glove box to provide insulation. Case fits perfectly in the glove box and is easily accessible when opening the glove box cover. This semi-rigid case is perfect for carrying and storing valuables, e.g. keys, mobile phone, wallet, sunglasses.

Models on S³Hull™, all iS models
295100327



SKI MODULE

Activates ski mode. Offers a choice of different pre-set acceleration curves for perfect launch every time when towing a skier or wakeboarder, plus steady tow speed. User-friendly interface on gauge. Simple plug-in connection. Includes hardware necessary for installation.

2011 and up models with iBR™*

Standard feature on WAKE models.

295100432

2010 models with iBR

****295100380**



CRUISE CONTROL AND SKI MODE

Activates ski mode, cruise control and slow speed mode through a switch mounted on the handlebar. Ski mode offers choice of different pre-set acceleration curves for consistent launch every time when towing a skier or wakeboarder. User-friendly interface on gauge. Simple plug-in connection. Includes switch, cap and hardware necessary for installation.

2011 models with iBR*

****295100455**

2010 models with iBR

295100383

*Intelligent Brake and Reverse (iBR)

**Until stocks depleted.

“Sea-Doo has been involved with Wake sports since the beginning; they get it. The Wake-specific accessories set these watercraft apart from all the others.”

— Ben Horan



12-VOLT OUTLET AND INSTALLATION KIT

Installs inside the Sea-Doo Spark glove box. Use this 12V outlet to charge your phone or GPS unit. Includes a cover to prevent material intrusion.

Sea-Doo Spark, GTI, GTS, GTR, WAKE 155

295100577

GTX & RXT models (except models S and with iS), WAKE Pro

295100612

ELECTRIC CONNECTION KIT

(Not illustrated)

A very convenient and safe way to add electrical accessories. Installs plug-and-play style to the Spark wiring harness with an easy installation and the electrical connection kit allows you to add 2 electrical accessories. Required in order to install the Sea-Doo Spark Depth Finder (295100590).

Sea-Doo Spark

295100599

SPEED AND WATER TEMPERATURE SENSOR

(Not illustrated)

Integrated boat speed and water temperature sensor. Simple plug-in connection with mounting hardware included.

GTI (2006-2010)

295100309



DEPTH FINDER

Displays the water depth below the hull. Plug 'n' play connection.



Sea-Doo Spark
295100590

2011 and up models with iBR*, GTS (2011 - 2013)
295100421

GTI, GTS, GTR, WAKE 155 (2014)
295100598

All GTX & RXT models with 4-TEC engines
(2009 and prior, except 2002), models with iS,
GTI (2008-2010)
295100324

2010 and prior iS models, GTX (2010), RXT, RXT-X
and WAKE Pro
295100332



X PACKAGE MODULE

Activates X Package functions on gauge: lap timer, fuel time and range, average and top speed/RPM display, and engine temperature. User-friendly interface on gauge. Simple plug-in connection. Includes hardware necessary for installation.

2011 and up models with iBR*.
Standard feature on X models.
295100431

2010 models with iBR*
295100381



VARIABLE TRIM SYSTEM MODULE

Activates and provides instantaneous VTS adjustment. Switch mounted on handlebar allows fine-tuning of watercraft trim angle while riding. Simple plug-in connection. Includes switch, cap and hardware necessary for installation. This accessory cannot be installed on 2012 and up models.

2011 models with iBR*, without VTS switch
295100433

2010 models with iBR*
295100379



LADDER

Retractable boarding step designed specifically for your watercraft. Spring-loaded to stay in the UP position.

All models 2006 and up

295100552



RATCHET TIE DOWN

181 kg (400 lb.) safe working load. 2.5 cm x 3 m (1 in. x 10 ft.) strap with Sea-Doo, Ski-Doo and Can-Am logos. Deluxe ratchet with rubber handle. Coated S hooks. Pack of 2.

All PWCs & Boats

860200447



RATCHET TIE DOWN

Designed specifically for strapping a PWC to a trailer: one strap does it all. Custom 4-hook system is ideal for quick installation/removal without detaching strap from ratchet. Fingertip tension adjustment with deluxe ratchet. 2.5 cm (1 in.) Sea-Doo branded polyester strap features hull protector pads, extra strap holder and coated hooks.

All PWCs & Boats

295100389



HANDLE GRIPS KIT

Better control and comfort using dual-density rubber design. Available in six colours that fit all 2000 and later watercraft.

Sold in pairs

295500976 • Blue / Black

295500977 • Earth Grey / Black

295500978 • Green / Black

295500979 • Red / Black

295500980 • Pewter Grey / Black

295500981 • Yellow / Black

Sold individually

277001336 • Slate Grey



FIRE EXTINGUISHER

A requirement for any boat. Ideal for grease, oil and electrical fires. Canadian Coast Guard approved.

295100005 • Red



PERFORMANCE INTAKE GRATE

Improve your high-speed handling and stability by replacing your standard intake grate with this anodised aluminium one.

RXP-X (2011 and prior)

295100435



SAFETY EQUIPMENT KIT

This kit includes all the essentials for your watercraft. 15 m (50 ft.) of buoyant heaving line, bailer, whistle and watertight flash light.

295100330



WHISTLE

This "pea-less" whistle produces an extremely loud, high, penetrating sound that can be heard over long distances. Unaffected by water: just clear with one quick blow.

295500554



24-UNIT STRIPE DECALS
Package of 24 decals,
4 of each design.
11 x 11 cm (4.5 x 4.5 in.).
295100347



SEA-DOO PARADISE DECAL
Set of 2. 25 x 20 cm (10 x 8 in.).
295100338



SEA-DOO WAVE DECAL
Set of 2. 25 x 20 cm (10 x 8 in.).
295100339



SEA-DOO X PACKAGE DECAL
Set of 2. 25 x 20 cm (10 x 8 in.).
295100340



SEA-DOO SURF DECAL
Set of 2. 25 x 20 cm (10 x 8 in.).
295100337



SEA-DOO FLOWER DECAL
Set of 2. 25 x 20 cm (10 x 8 in.).
295100341



SEA-DOO TROPICAL DECAL
Set of 2. 25 x 20 cm (10 x 8 in.).
295100342



REGISTRATION KIT

This high quality UV-resistant registration kit is new and improved. Easier to install without deformation, with a glue that adheres to all surfaces, including Sea-Doo Spark. Available in two contrasting colours and meets mandatory regulations for height and size. Dimensions: 7.6 cm (3 in.)

All PWC models

295100570 • Black
295100578 • Light Grey

CUSTOMISE YOUR SEA-DOO SPARK

WITH FULLY INTEGRATED ACCESSORIES



SNAP-IN FENDERS + CARGO NET



FRONT STORAGE BIN KIT



SEA-DOO STEP
+
GRIP MAT EXTENSION



DEPTH FINDER

Build your own Sea-Doo Spark

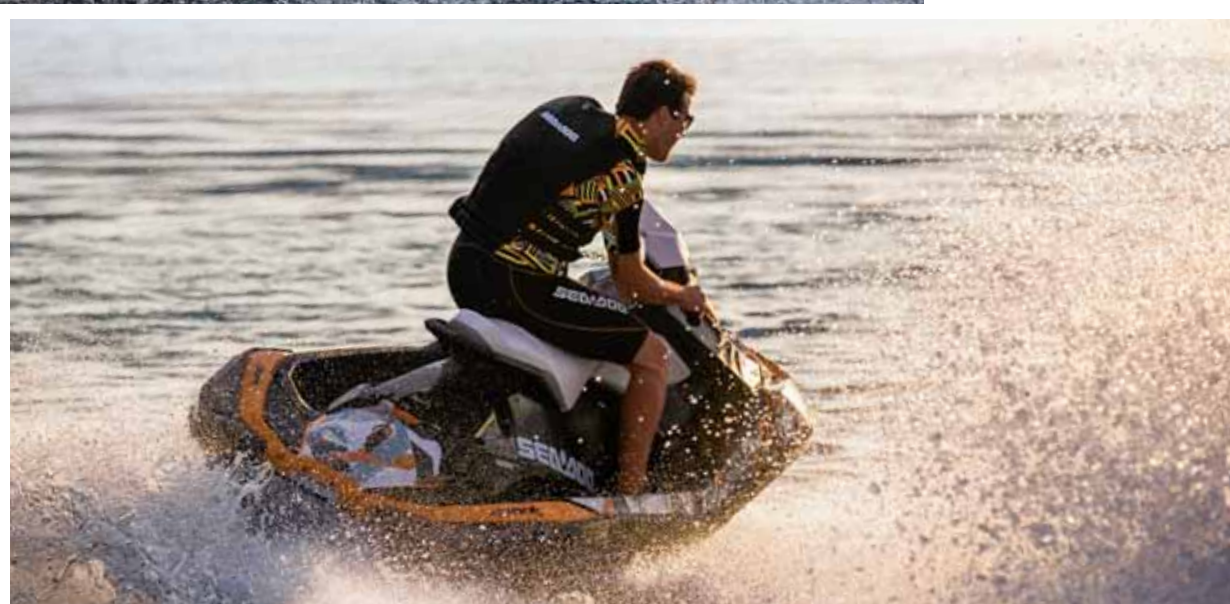
Select fully integrated accessories and graphic kits that will make your Sea-Doo Spark unique to you.



www.SparkSomeFun.com

“I always use OEM stuff.
I’ve never had a problem
even after thousands of
hours of riding:
so I just continue using
OEM parts.”

— Jeremy Schandelmayer



5

ESSENTIAL BRP GENUINE PRODUCTS TO ENSURE A PROPER TUNE-UP



XPS 4-STROKE SYNTHETIC OIL
293600112, 293600115



IMPELLER



OIL FILTER
420956741



WEAR RING
2670003712



JET PUMP OIL
293600011

**MAKE
THE RIGHT
CHOICE**

BRP's commitment to quality means that every watercraft is engineered to the highest industry leading standards. Nevertheless, a lack of proper maintenance may cause even the best components to fail eventually.

By using original BRP maintenance parts, you are taking care of your investment.

MAINTAIN THE LEVEL OF FUN

**KEEP YOUR SEA-DOO HEALTHY
FOR A LONG LIFE.**

Sea-Doo watercraft are engineered to give families years of fun on the water. To help ensure on-water fun is maximised, some off-water care is required. BRP provides a full array of care and maintenance products to ensure your Sea-Doo looks its best and performs at peak levels.

Suggested Off-Season Products

- **XPS⁺ FUEL STABILISER** – Protect against fuel contamination and residue build-up in the fuel⁺ system during extended storage.
- **XPS STORAGE OIL** – Protect your internal engine parts from rust and corrosion caused by condensation during prolonged periods of non-use.
- **YUASA SMART SHOT AUTOMATIC BATTERY CHARGER** – When your watercraft battery is removed from the unit, keep it connected to ensure maximum charge.

Suggested In-Season Products

- **XPS LUBE** – This multi-purpose lubricant and water dispersion product should be used to prevent rust, corrosion and moisture intrusion.
- **XPS PWC CLEANING AND DETAILING KIT** – Keep your watercraft clean and protected to ensure your gel-coat, vinyl and other surfaces stay looking new.
- **WATERCRAFT COVER** – While not in use, keep your watercraft covered to protect it from the sun and elements.

Products available at your authorised participating Sea-Doo Dealers only. Consult your authorised Sea-Doo dealer, a guarantee of excellence in the maintenance of your personal watercraft. Only authorised dealers can offer original BRP, Rotax® and 100% Sea-Doo products and parts.



"The Sea-Doo Flush Kit is easy to use, and flushing after rides is part of taking proper care of my watercraft."

— Tommy Bishop-Strahlo



295100555

FLUSH KIT

A must to help keep your engine corrosion-free and to maximise performance.

Kit includes all necessary components for a trouble-free flush.

Sea-Doo Spark

295100555



295500068

For use on older watercraft that do not yet have a "T" fitting and don't have a threaded water outlet on the ride shoe.

295500068



COUPLER HOSE

For most watercraft and boat models that already have a "T" fitting. Also for watercraft and boat models that use a flush adapter on the ride shoe water outlet.

295500258



FLUSH ADAPTER

For most watercraft and boat models with a threaded water outlet fitting on the ride shoe.

295500473



DRILL PUMP

Safely and easily removes engine oil.

All 4-TEC engines

295100244



BILGE PUMP KIT

Keeps engine compartment dry. Includes 460 gph bilge pump, stainless steel mounting bracket, bilge fitting, hose and hardware necessary for installation.

Sea-Doo Spark

295100497

Models 2010 and up with iBR* and GTS (2011 and up)

295100434

2014 GTI, GTS, GTR, WAKE 155 S

295100597



IMPELLER

High-performance impeller designed specifically to maximise your Sea-Doo watercraft and boat performance. Ask your authorised Sea-Doo dealer which one fits your vehicle and your use.

	IMPELLER OUTSIDE DIAMETER		PITCH ANGLE
	MM	IN	
271000470	139.5	5.49	11 - 22
271000920	155.0	6.10	15 - 21
271001024	155.0	6.10	10 - 21
267000199	155.3	6.11	10 - 20
267000201	155.3	6.11	15 - 21
267000119	155.5	6.12	10 - 21
267000527	155.5	6.12	11 - 17
267000431	155.5	6.12	11 - 18
267000115	155.5	6.12	11 - 19
267000283	159.0	6.26	10 - 21
267000507	159.0	6.26	14 - 24
267000408	159.0	6.26	14 - 25
267000504	159.0	6.26	10 - 22
267000563	159.0	6.26	15 - 22
267000350	159.0	6.26	13 - 18

**NGK® SPARK PLUGS**

BRP dealers carry the full line of premium NGK spark plugs for Sea-Doo watercrafts and boats.

DCP-R8E
707000246

CR8EB
415129403



“It’s a better product, there’s a lot more around, the parts are more available, easier to work on, more options.”

— Jeremy Schandelmayer

**PISTON KIT**

Everything you need in a box. Each piston kit includes: 1 OEM piston and ring, 2 circlips and piston pin.

947 STD
295501101

947 STD oversize
295501102

947 DI
295501103

947 DI oversize
295501104

**YUASA® BATTERIES**

Top of the line models from the preferred original equipment battery supplier in North America.

19 amps. Dry (YB16CL-B)
278001756

30 amps. Dry (YB30CLB)
278001882

30 amps. Wet (BBPM7230L)
515176151

**YUASA SMART SHOT AUTOMATIC BATTERY CHARGER**

Yuasa Smart Shot automatic battery chargers are available with 900 milliamp and 1.5 amp charge capacities and ensure optimum power is available from your battery when you need it. Both chargers are supplied with a fused-ring connector, in addition to the alligator clips that can be attached permanently to your battery, making charging and maintaining your battery simple.

Automatic 6/12V 1.5 amps. 5 Stage
529035772

900 Automatic 12V 900MA
529035773

**LIFT KIT**

Lift and position your watercraft accurately with a lift kit of nylon webbing and vinyl-coated steel lift plates. Lifting capacity of 544 kg (1,200 lb.).

529036189

TOP REASONS WHY YOUR BRP ROTAX ENGINE DESERVES XPS

- Extra engine protection for heavy loads and high RPM.
- Friction modifiers designed for optimal clutch performance.
- Additional corrosion protection for wet environments and periods of extended non-use.
- All-climate synthetic base oils for easy starting.
- Years of extensive R&D and rigorous testing with industry leading Rotax engines.



ENGINE OILS



XPS 4-STROKE SYNTHETIC OIL - ALL CLIMATE GRADE

The same kind of protection our summer grade oil offers, but in the right formula for colder temperatures. Designed specifically for BRP high output 4-stroke engines, not cars or trucks.

946 ml 3.785 L
293600112 293600115



XPS 4-STROKE SYNTHETIC OIL - SUMMER GRADE

Designed specifically for BRP high-output 4-stroke engines to protect in the most demanding conditions, when ridden by even the most aggressive riders.

946 ml 3.785 L
293600121 293600122



XPS 2-STROKE SYNTHETIC OIL

The ultimate in protection, this low-ash 2-stroke fully synthetic injection oil was developed specifically for our highest performance engines. Meets the lubrication requirements of Sea-Doo watercraft equipped with Rotax carburettor, RFI or DI 2-stroke engines.

946 ml 3.785 L
293600132 293600133



XPS 2-STROKE SYNTHETIC BLEND OIL

This 2-stroke synthetic blend's new formulation was developed specifically for Sea-Doo watercraft with Rotax RFI and carburettor 2-stroke engines. Extends engine life and reduces smoke emission and combustion deposits compared to conventional oils.

946 ml 3.785 L
293600100 293600101



XPS 2-STROKE MINERAL OIL

Formulated and developed to work specifically in Sea-Doo watercraft equipped with Rotax carburettor 2-stroke engines.

946 ml 3.785 L
293600117 293600118

MAINTENANCE PRODUCTS

**XPS SYNTHETIC GREASE**

Recommended for marine applications. This synthetic grease provides the best wear protection and water-resistance available.

400 g
293550010

**XPS STORAGE OIL**

This speciality oil is a must when putting your watercraft away for extended periods. Specially formulated to protect the engine's internal parts from the hazards of rust and corrosion caused by condensation during storage or prolonged periods of non-use.

350 g
413711600

**XPS LUBE**

A multi-purpose lubricant that prevents rust, corrosion and moisture intrusion. Contains active extreme-pressure additives that provide excellent lubrication and anti-wear properties. Comes in a spray can that works even when upside down.

400 g
293600016

**XPS 4-STROKE MAINTENANCE AND OIL CHANGE KIT**

For all 4-stroke Sea-Doo engines, except Sea-Doo Spark engine. Kit includes: 3.785L of XPS synthetic oil, oil filter, 3 NGK® spark plugs and instruction sheet.

295501075

CLEANERS

**XPS MICROFIBRE TOWELS**

Made up of extremely fine fibres, their soft surfaces have been perfected for drying and polishing boats, motorcycles, cars or any shiny finish. XPS Microfibre Towels are so absorbent they hold up to seven times their weight in water. Machine-washable, meaning they can be used over and over again. Pack of 2.

219701759

**XPS FUEL STABILISER**

Fuel additive to protect against fuel contamination and residue build-up in all fuel systems. Should be used before storing your watercraft for any long period of time. Suitable for all petrol engines.

240 ml
413408601

**PRE-MIXED ANTIFREEZE/COOLANT**

Pre-mixed, ready to top off your coolant level. Blended for our Rotax engines with anti-corrosive additive.

1 litre
219700362 • 2013 and prior
219702685 • 2014 models

**XPS JET PUMP OIL**

Helps maintain the life of your Sea-Doo watercraft jet pump.

170 g
293600011

**XPS BOAT & PWC CLEANING AND DETAILING KIT**

Everything needed for care and cleaning, including the bucket. Includes: All Purpose Cleaner, Vinyl Cleaner, Spray Cleaner & Polish, 2 microfibre towels, Deluxe Wash Sponge.

219701715

All these products are available individually.

219701709	XPS All Purpose Cleaner • 946 ml
219701710	XPS Vinyl Cleaner • 946 ml
219701706*	XPS Spray Cleaner & Polish • 397 g
219701711	XPS Boat & PWC Wash & Wax • 946 ml

*Not for Sea-Doo Spark.

RIDE IT HARD. TREAT IT RIGHT.



**XPS. THE ONLY OIL ENGINEERED BY BRP FOR
THE LEVEL OF PERFORMANCE YOU EXPECT.**

FOR THE FULL XPS STORY, VISIT XPSLUBRICANTS.COM



THE WORLD IS OUR PLAYGROUND

Nothing is more valuable than your playtime. That is why BRP is dedicated to continually finding new and better ways to help you enjoy your favourite power sports. From snow to water to both on- and off-road fun, our passion for adventure fuels the innovations that result in the ultimate power sports experience for our customers. We



value the land and water we play on and we are committed to protecting it. Our desire to thrill is paired with an emphasis on rider responsibility, placing personal safety above everything else. So every outing can be the most enjoyable, memorable and thrilling experience possible. Because your free time should always be your best time.

www.brp.com



SKI-DOO® LYNX® SEA-DOO® EVINRUDE® JOHNSON® ROTAX® CAN-AM®