

LIVE THE
SEA-DOO®
LIFE



2020 | GENUINE PARTS | ACCESSORIES | RIDING GEAR
INTERNATIONAL EDITION

Welcome to your Sea-Doo Life

Imagine a place where your cooler is always full. Where time feels like it goes by just a little slower, and your favorite songs last just a little longer. It's a place that smells like tropical flowers and sunscreen with a hint of coconut. It's your Sea-Doo Life, and with Sea-Doo's original accessories and riding gear you can easily turn the big beautiful blue into something that's especially for you.

Accessories

- 2 Key Accessories for Every Ride
- 4 LinQ™ Accessories
- 7 Bags and Storage
- 8 Watersport Accessories
- 9 Step and Ladder
- 10 Controls and Grips
- 12 SPARK® Graphic Kits
- 13 Performance Accessories
- 14 Tech Accessories
- 15 Electronics and Electricals
- 18 Body Accessories
- 20 Docking
- 22 Riding Essentials
- 24 Covers
- 26 Trailers

Riding Gear

- 30 PFDs - The Ultimate
- 32 PFDs - The Athletic
- 34 PFDs - The All-Purpose
- 36 PFDs Chart
- 38 Riding Suit
- 39 Wetsuits / Rashguards
- 42 Eyewear
- 43 Footwear
- 44 Gloves
- 45 Bags
- 46 Sportswear
- 49 Sizing Chart

Parts

- 50 BRP Genuine Parts

XPS

- 56 XPS Engine Oils and Maintenance



2 Year Warranty*

- ✓ Genuine BRP Parts and Accessories installed by your authorized BRP dealer
- ✓ BRP Riding Gear
- ✓ Aftermarket products sold by BRP

Warranty period may vary per your region.

Get all the details from your Sea-Doo dealer



*Purchased at an authorized BRP dealership/distributor. Unless otherwise stipulated or required by law. Other exclusions may apply. See complete limited warranty or contact your authorized Sea-Doo dealer. This limited warranty does not apply to factory installed accessories. This limited warranty does not apply to Evinrude parts and accessories.

Products in this catalog will be available for purchase at your authorized Sea-Doo dealer. For advertising purposes, some scenes depicted in this catalog include professional riders and operators executing maneuvers under ideal and/or controlled conditions. Do not attempt any of these or any other risky maneuvers if they're beyond your level of riding ability, as well as your understanding and respect for the performance of your Sea-Doo watercraft. RIDE SMART FROM THE START. Always ride responsibly and safely. Follow all instructional and safety materials. BRP recommends a minimum operator age of 16 years old for riding a watercraft. Always wear appropriate protective clothing for your type of boating use, including a Coast Guard approved PFD. Always remember that riding and alcohol/drugs don't mix. Operate your watercraft keeping a safe distance between yourself and others. Always observe applicable local laws and regulations. Because of its ongoing commitment to product quality and innovation, Bombardier Recreational Products Inc. (BRP) reserves the right, at any time, to discontinue or change specifications, prices, designs, features, models or equipment without incurring any obligations. Some models depicted herein may include optional equipment. Prices are based on Manufacturer Suggested Retail Prices. Dealers may sell for a different price. For Canada and U.S. taxes are not included. Depending on location, products are distributed by BRP US Inc., Bombardier Recreational Products Inc., BRP European Distribution SA, BRP Australia Pty Ltd., BRP Finland Oy, BRP Japan Ltd., BRP Comm & Trade (Shanghai) Co Ltd. or Bombardier Recreational Products Motores da Amazonia Ltda. ® are registered trademarks and TM and the BRP logo are trademarks of Bombardier Recreational Products Inc. or its affiliates. * is a trademark of Bombardier Inc. used under license. Velcro is a registered trademark of Velcro Industries. Bluetooth is a registered trademark owned by the Bluetooth SIG, Inc. Garmin and ECHOMAP are trademarks of Garmin Ltd. or its subsidiaries. GTX is a registered trademark of Castrol Limited, used under license. YUASA is a registered trademark of YUASA Batteries Inc. NGK is a registered trademark of NGK Spark Plugs, Ltd. Salt-Away is a trademark of Salt-Away Products. All other company and/or product names are trademarks of their respective holders. © 2019 BRP Inc. All rights reserved.



Discover the complete MY20 Sea-Doo PAC line-up at brppac.com



Watch our videos to learn more about Riding Gear and Accessories sea-doo.com

Riding gear safety rules and recommendations

You and your passengers are required to wear an approved PFD certified for use with a personal watercraft.

Wearing a neoprene wetsuit or bottom will provide adequate protection to the lower part of the body, unlike normal swimwear. You can suffer severe internal injuries if water is forced into a lower body cavity as a result of falling in the water or being near the jet thrust nozzle.

Finally, extra protective equipment such as footwear, gloves and goggles is also recommended.

You can find all of these items at an authorized Sea-Doo dealer.

Sea-Doo Accessories

Enhance your adventures

From out-and-out family fun to full-throttle hairpin turns in choppy waters, our accessory combination ideas are a great way to enhance your Sea-Doo Life.

Family Fun

- p. 6 LinQ™ Box
- p. 7 Removable Storage Bin Organizer
- p. 8 LinQ Retractable Ski Pylon
- p. 9 Wakeboard Rack
- p. 14 BRP Audio-Premium System
- p. 17 Depth Finder



SPARK TRIXX 2up

Watersport Thrills

- p. 6 LinQ Box
- p. 7 Removable Storage Bin Organizer
- p. 9 Wakeboard Rack (Additional)
- p. 14 BRP Audio-Premium System
- p. 18 Ergolock Knee Pads (Black)
- p. 20 Snap-in Fenders
- p. 20 Snap-in Fenders Installation Kit



WAKE PRO 230

Agility Performance

- p. 5 LinQ Base Installation Kit
- p. 6 LinQ Watertight Bag
- p. 9 Boarding Step
- p. 13 Main Deck Hardware Upgrade Kit
- p. 13 Front and Rear Deck Hardware Upgrade Kit
- p. 13 Pro-Series Sponson Kit
- p. 14 BRP Audio-Portable System
- p. 14 BRP Audio-Portable System Support Base
- p. 18 Side Protectors
- p. 18 Floorboard Wedges



Connected Comfort

- p. 8 Tow Pro
- p. 9 Boarding Step
- p. 10 Handlebar with Adjustable Riser
- p. 10 Extended Variable Trim System
- p. 12 Endless Summer Graphic Kit
- p. 14 BRP Audio-Portable System
- p. 14 BRP Audio-Portable System Support Base
- p. 18 Floorboard Wedges
- p. 18 Ergolock Knee Pads (Black)
- p. 18 Side Protectors
- p. 19 Mirrors
- p. 19 3up Comfort Seat
- p. 20 Snap-in Fenders



RXT-X 300

Fishing

- p. 4 LinQ 13.5 US Gal (51 L) Cooler
- p. 4 Quick-Attach Rod Holder
- p. 7 Removable Storage Bin Organizer
- p. 11 Wind Deflectors for Handlebar
- p. 11 Heated Grips
- p. 15 Garmin† Echomap† Plus 62cv Fish Finder
- p. 18 Angled Gunwale Footrests
- p. 19 Fishing Seat
- p. 20 Snap-in Fenders
- p. 20 Snap-in Fenders Installation Kit



GTX Ltd

Ready-to-Rev

- p. 6 LinQ Fuel Caddy
- p. 6 LinQ Watertight Bag
- p. 7 Storage Bin Organizer
- p. 7 Removable Storage Bin Organizer
- p. 14 BRP Audio-Premium System
- p. 15 USB Port
- p. 20 Snap-in Fenders
- p. 20 Snap-in Fenders Installation Kit



SPARK 3up



Fast. Easy. Secure.

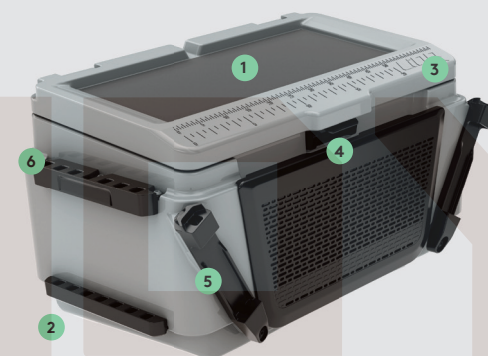
Nothing outdoes our exclusive quick-attach, tool-less rear-cargo LinQ System. It redefines what your watercraft can carry, and how it carries them. You get to pack more, play more, and ride farther, all while keeping food and drinks cold and fresh.

New

LinQ 13.5 US Gal (51 L) Cooler

- Weather-resistant, high-volume cooler.
- Rotomolded construction for exceptional rigidity and durability, and premium-quality foam insulation for optimal ice retention.
- LinQ Locking Anchor Base Kit (295100858) is required for installation on 2018 models and on some 2019 models.
- If your watercraft is not equipped with a ladder, adding one for easy reboarding is recommended.

RXT, RXT-X, GTX, GTX Ltd, WAKE PRO (2018 and up),
GTI, GTI SE, GTR and WAKE 170 (2020), FISH PRO (2019 and up)
269800943 3416 zł



- 1 Recessed Work Surface** ~ Provides an ideal location to open your tackle boxes and attend to your rod.
- 2 Drain Plug** ~ At the end of the day, use one of two drain plugs for easy draining and to lighten the weight at the rear.
- 3 Fish Ruler** ~ Molded into the cooler lid, you can quickly validate the size of your fish.
- 4 Heavy-Duty Storage Pocket** ~ Use to store tackle boxes and soft baits.
- 5 Angled Trolling Slots** ~ Set your rod at the perfect angle to troll two lines at the same time (if local regulations allow).
- 6 Rod Holder Slotted Bars** ~ Rod holders can simply be added and easily moved to different locations around the cooler (Quick-Attach Rod Holder (295100795) sold separately).

Quick-Attach Rod Holder

- Features quick attachment system with release lever for easy installation onto / removal from any of the 30 different positions on the LinQ 13.5 Gal (51 L) Cooler.
- Firmly holds fishing rod using a molded rubber cap specifically designed to quickly secure or remove the fishing rod using the reel arm.
- Perfect to safely transport your fishing rods to your favorite fishing spots or for trolling.
- LinQ 13.5 Gal (51 L) Cooler is required for installation.

295100795 122 zł

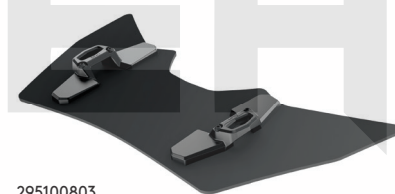


LinQ 4.2 US Gal (16 L) Cooler

- LinQ mounted weather-resistant cooler.
- Rotomolded construction for exceptional rigidity and durability.
- Premium-quality foam insulation for optimal ice retention.
- Already marinized for saltwater purposes.
- Note: Cannot be mounted on the LinQ Fuel Caddy.

Models with LinQ Base Kit

295100698 1423 zł

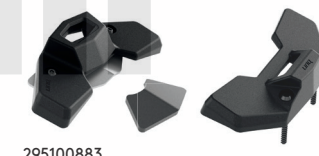


LinQ Base Installation Kit

- Allows you to install LinQ mounted accessories on your Sea-Doo watercraft to extend cargo options and journey opportunities.
- Allow the installation of LinQ accessories to the back of your watercraft.
- Not compatible with the LinQ 13.5 US Gal (51 L) Cooler.
- Includes 2 LinQ bases and hardware.
- If your watercraft is not equipped with a ladder, adding one for easy reboarding is recommended.

GTI, GTX and GTR (2011-2019),
GTR-X (2017-2019), RXP (2012 and up)
295100803 315 zł

GTX (2016-2017), RXT-X (2016-2017)
295100842 243 zł



New SPARK 2up
295100883 356 zł

SPARK 3up
295100802 243 zł

LinQ Update Locking Anchor Base Kit

- (Not illustrated)
- LinQ bases with locking system for staying in the "up" position while installing LinQ accessories.
 - Required on 2018 models and some 2019 models, to install the LinQ 13.5 US Gal (51 L) Cooler (269800943).
 - Replaces standard LinQ bases.
 - Standard on the FISH PRO.

RXT, RXT-X, GTX, GTX Ltd and
WAKE PRO (2018 and some 2019)
295100858 53 zł

LinQ Accessories



LinQ
SYSTEM™

Outfit the moment, quickly and tool-lessly



Bags and Storage



Front Storage Bin Kit

- Soft-sided design matches the contours of the SPARK to maximize storage.
- 7.4 US Gal (28 L) capacity.
- Polyurethane construction protects items from rough waves.
- Drain holes at bottom.
- BRP Audio-Portable System compatible.
- Front Deflector Lid Kit included.

SPARK

295100864 709 zł



Front Deflector Lid Kit

- Made of polypropylene, this removable deflector directs water away from the driver's feet and legs for a drier ride.
- BRP Audio-Portable System compatible.

SPARK

295100865 532 zł



New

LinQ Watertight Bag

- Fully waterproof roll-top design secures gear tightly.
- 10.6 US Gal (40 L) of adjustable capacity.
- Heavy-duty rigid plastic base.
- Foam-lined bottom for additional protection.
- Integrated handle for easy transportation on/off the vehicle.
- Equipped with Marinized LinQ Hardware Kit.
- 2 LinQ Cargo Bases included.

Models with LinQ Base Kit

715002875 914 zł



LinQ Box

- High-precision injected HDPE construction provides rigidity and durability.
- 5 US Gal (19 L) maximum capacity.
- Weather-resistant, sealed and lockable cover.
- Equipped with Marinized LinQ Hardware Kit.

Models with LinQ Base Kit

715004301 687 zł

LinQ Fuel Caddy

- Designed for easy pouring.
- 4 US Gal (15 L) capacity.
- Allows the LinQ Watertight Bag (715002875) to stack on top for more storage.
- Already marinized for saltwater purposes.
- LinQ Base Installation Kit is required to install LinQ accessories when not standard on the watercraft.

Models with LinQ Base Kit

295100752 947 zł



LinQ Fuel Caddy Replacement Rubber Cap

(Not illustrated)

295100791 140 zł

LinQ Fuel Caddy Replacement Cap and Nozzle

(Not illustrated)

860202130



Marinized LinQ Hardware Kit

- Essential upgrade for LinQ Bags when used on watercraft in saltwater.
- Includes stainless steel LinQ hardware to render your LinQ fully corrosion proof.
- Quick and easy installation.
- Not required for installation of the LinQ coolers, LinQ Watertight Bag and LinQ Box.

For LinQ Bags

295100751 103 zł



10 L



25 L

Dry Bag

- Watertight bag.
- Puncture-resistant PVC coated polyester fiber material.
- Reinforced bottom.

269502121 · 2.6 US Gal (10 L) 156 zł

- Includes a shoulder strap.
- 420-denier resistant polyester with TPU coating.

269001936 · 6.6 US Gal (25 L) 281 zł



Front Storage Tray

- Optimizes storage space.
- 3.2 US Gal (12 L) capacity.

RXP-X (2012 and up), GTI and GTS (2011-2019), GTR (2012-2019), WAKE 155

295100583 903 zł



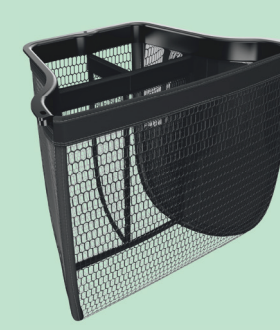
295100732

1 Removable Storage Bin Organizer

- Breathable front bin organizer made from high-quality premium-coated synthetic mesh.
- Carrying handle and easy storage on or off the watercraft.
- Perfect for storing wet clothes away from the rest of your gear or to transport gear to/from the watercraft.
- Quick-attach fasteners to secure the bag in place inside the storage bin.
- Designed to be installed with the Storage Bin Organizer (295100835) for a complete set-up (295100732 only).

RXT, RXT-X, GTX and WAKE PRO (2018 and up), FISH PRO

295100732 315 zł



2 Storage Bin Organizer

- Leave-in breathable premium-coated synthetic mesh organizer.
- Perfect for safely storing and organizing smaller valuables.
- Designed to be installed in conjunction with the Removable Storage Bin Organizer (295100732) for a complete set-up.
- Standard on GTX Ltd models (2018 and up).

RXT, RXT-X, GTX and WAKE PRO (2018 and up), FISH PRO

295100835 186 zł

Note: LinQ Base Installation Kit is required to install LinQ accessories when not standard on the watercraft.

Some products may not be available or homologated in your region. Contact your dealer for more information.

Watersport Accessories



Getting towed has never been so exciting



Tow Pro

- Three accessories in one – a tow pylon, spotter handle and equipment rack.
- Add more fun to pulling wakeboarders, wakeskaters and tubers thanks to higher tow point.
- Gives the spotter more confidence with ergonomic grab handles.
- Carry your board out to clear water.
- Includes a strap for conveniently stowing your tow rope.
- Not compatible with SPARK 3up LinQ Base Installation Kit (295100802)

SPARK 3up
295100605 1838 zł



LinQ Retractable Ski Pylon

- High-rise pylon keeps rope out of water for better watersport fun.
- Features built-in spotter grab handles and retracts out of the way when not in use.
- Standard on WAKE PRO (2018 and up) and WAKE 170 models.

RXT, RXT-X, GTX and FISH PRO (2018 and up),
GTI, GTI SE, GTR (2020)
295100909 1476 zł



LinQ
SYSTEM

The LinQ System offers quick and easy installation and removal.

Retractable Ski Pylon

- High-rise pylon keeps rope out of water for better watersport fun.
- Features built-in spotter grab handles and retracts out of the way when not in use.
- Standard on WAKE 155 models (2019 and prior).

RXT-X, GTX, RXT (2017 and prior, except models with iS), GTI and GTS (2011-2019), GTR (2012-2019) except GTR-X, GTX Ltd (2014-2017)
295100457 1800 zł



Strap Replacement Kit

295100740 92 zł



Step and Ladder



Wakeboard Rack

- Each rack holds one wakeboard while offering safe and easy board storage.
- Convenient to use and easily removable.
- Sold individually.
- Standard on WAKE and WAKE PRO models.

RXT, RXT-X, GTX and GTX Ltd (2018 and up),
GTI, GTI SE and GTR (2020)
295100838 831 zł



Part numbers you will also need for installation:

GTI and GTS (2011-2019)
291003104, 291002869
69 zł

RXT and GTX (2010-2017)
291003582, 291002864
64 zł 59 zł

Shock Tube

- Protects passengers from ski rope kick-back and keeps it away from impellers.
- Durable nylon covered closed-cell foam.

295100662 104 zł



Ski Tow Eye

- Replaces existing U-ring for easy towing of skiers and tubes.

GTX, GTS, GTI, RXT, GTR and RXP-X (2012)
291002351 140 zł



Boarding Step

- Convenient step with knee-friendly surface.
- Installs easily on the right side of a SPARK and can hold up to 250 lb (113 kg).
- Easily mounts on the transom and can be installed by any authorized Sea-Doo dealer in minutes.

SPARK
295100642 515 zł



Boarding Ladder

- Retractable boarding step designed for your watercraft.
- Makes boarding from the water much easier.
- Spring-loaded platform that stays in the "up" position.
- Direct bolt-on installation, thanks to integrated mounting points on the watercraft.

RXT, RXT-X, GTX and WAKE PRO (2018 and up),
GTI, GTI SE, GTR and WAKE 170 (2020)
295100869 975 zł

GTI, GTS, GTR (2006-2019), RXP (2006 and up),
RXT-X and GTX (2006-2017)
295100742 1174 zł

Some products may not be available or homologated in your region. Contact your dealer for more information.

Fun factor

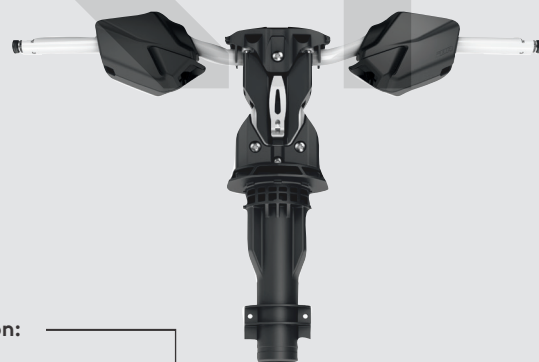
Sea-Doo SPARK makes it easy to stand up, show off, and turn heads. Get creative, be original and get the accessories that make your tricks shine, every time.



Handlebar with Adjustable Riser

- The one-of-a-kind handlebar with adjustable riser gives you more leverage to easily maneuver the SPARK and customize your experience to your personal riding style.
- Quickly adjust steering to a variety of heights - use the lower position for cruising/sitdown riding, or extend to maximum height in seconds for stand-up riding.
- Adjustable length of 1.6" to 4" (42.5 mm to 103.5 mm).
- Just flip the lever to make the adjustment, no tool required.

SPARK
295100746



Part numbers you will also need for installation:

SPARK without iBR*	2016 and prior:	
2016 and prior:	278003490,	399 zł
278003491,	295100702	532 zł
295100702		
2017 and up:	278003491	399 zł
SPARK with iBR	2018 and up:	
*Intelligent Brake and Reverse (iBR)™.	278003823	399 zł

Adjustable Riser Retrofit Kit

- Replaces stock central console to allow for installation of Handlebar with Adjustable Riser.
- Handlegrips with Palm Rest included.
- Reinforced design, includes all hardware required for installation.

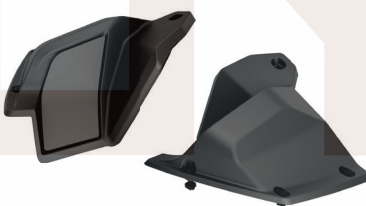
SPARK (2016 and prior)
295100702 532 zł



Step Wedges

- Provide more stability and confidence in different tail stand riding positions.
- Rear footrest with a 45-degree slope to enable you to stand upright on your watercraft when performing tail stands and ultimately expand your range of possibilities by making it easier to pull off even more tricks.

SPARK
295100705 477 zł



Extended Range Variable Trim System (VTS)

- (Not illustrated)
- This Sea-Doo exclusive accessory lets you exaggerate how high you can raise the nose or how deep you can bury it in the water.
- The extended range VTS doubles the range of adjustment compared to our current standard VTS.
- Adjustments are instantaneous thanks to the quick activation switch mounted on the handlebar to allow fine tuning of the watercraft trim angle while riding.
- Simple plug-in connection, and includes switch, cap and hardware necessary for installation.
- Standard on SPARK TRIXX.

SPARK with iBR (2017 and up - full extended range), (2016 and prior - stock range)

295100704 1052 zł

Wiring Harness

- (Not illustrated)
- Required in order to install the Handlebar with Adjustable Riser (295100746) and/or RF D.E.S.S Key (295100712).
- Works for either accessory or when using both at the same time, so no need to buy a second harness.

SPARK with iBR (2017)	SPARK with iBR (2018 and up)	SPARK without iBR (2017 and up)
278003490 399 zł	278003823 399 zł	278003491 399 zł



Heated Grips Harness

(Not illustrated)
295100906 212 zł



Heated Grips

- Heated grips with integrated button on the left grip.
- 5 levels of heat.
- Slip on to replace existing grips.
- Integrate Sea-Doo's renowned palm rest design.
- Use with Wind Deflectors for Handlebar (295100762) for maximum performance.
- Heated grips harness (295100906) required for some models.

All Sea-Doo Models
295100812 1015 zł

Needed for installation on some vehicle:

GTX, RXT, WAKE PRO (2011-2017), GTI, GTS, GTR, WAKE (2011-2019), GTR-X (2018-2019), RXP-X (2018-2020), SPARK

Handlebar

- 7/8" (22 mm) colored stainless steel handlebar.

GTR-X (2016-2019), RXP-X (2016 and up), SPARK with Adjustable Riser

● 277002069 · Neon Yellow	568 zł
● 277002068 · Dragon Red	568 zł
○ 277002016 · White	568 zł
● 277002123 · California Green	568 zł

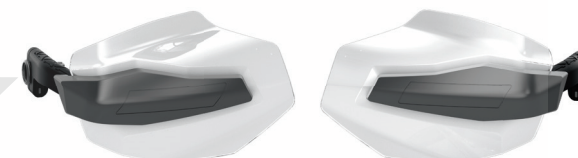


Wind Deflectors for Handlebar

- Design delivers better protection and great style.
- Protection from cold wind and water splashes.
- Sold in pairs.

GTX, RXT, RXT-X and WAKE PRO (2010 and up), GTI, GTS and WAKE (2011 and up), GTR and RXP-X (2012 and up), SPARK (2014 and up)

295100762 488 zł



Handlegrips Kit

- Better control and comfort using dual density rubber design.
- Sold in pairs.

Fits all watercraft (2000 and up), except SPARK (2015 and prior)

● 295500976 · Blue/Black	90 zł
● 295500977 · Earth Grey/Black	90 zł
● 295500979 · Red/Black	90 zł
● 295500980 · Pewter Grey/Black	90 zł
● 295500981 · Yellow/Black	90 zł

Fits all watercraft (2000 and up), except SPARK (2015 and prior)

● 277001336 · Slate Grey/Black (Sold individually) 64 zł



Handlegrip with Palm Rest

- Designed and profiled to deliver a much firmer grip with less effort, allowing you greater control and comfort on longer rides, minus the hand fatigue.
- Sold individually.

GXT, RXT, RXT-X and WAKE PRO (2010 and up), GTI, GTS and WAKE (2011 and up), GTR (2012 and up), RXP-X (2012 and up) and SPARK (2014 and up)

Right	Left
● 277001946 · Black 84 zł	● 277001958 · Black 84 zł
● 277002014 · Red 75 zł	● 277002015 · Red 75 zł



Some products may not be available or homologated in your region. Contact your dealer for more information.

Graphic Kits

Splash of colors

Enjoy a wide range of combinations with any of our 40+ different graphic kits, available in 3 customization levels across 6 color themes.

These Sea-Doo exclusive Attitude Graphic Kits let you customize your SPARK, whether for a simple facelift or because you want your watercraft to turn heads.

3 levels of customization



Designed to bond to all surfaces of the vehicle, and the designs will not fade in sunlight.



New Graphic Kits

Endless Summer



Flora



Back Splash



Hang Ten



Kahuna



Bloom



They're BRP licensed products supplied by SCS and the price range is from \$100 USD to \$450 USD* depending on the levels of customization selected. SCS offers custom registration numbers that can be ordered as an integral part of your Attitude Graphic Kit, or they can be customized and manufactured separately.

*Shipping and installation fees are not included.

All you need to do is go to scsseadoowraps.com to view all the wrap options, then simply visit your Sea-Doo dealer, who will handle your order and the installation.

Performance Accessories

Top-Loader Intake Grate

- Intake grate with unique wing design for enhanced acceleration and top speed.
- Deep side rails improve straight line stability and handling.
- Durable black race coating protects from corrosion.
- USBA race legal.
- Pump Seal Kit (295100846) is required to fully unlock the benefits of the grate.

SPARK

295100845 1323 zł

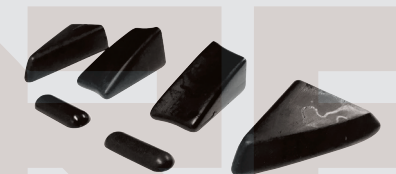


Pump Seal Kit

- Location specific, molded inserts fill voids in intake grate shoe that can bleed air into pump causing cavitation.
- Allows for a positive seal for maximum performance.
- Required when installing the Top-Loader Intake Grate (295100845).

SPARK

295100846 427 zł



Pro-Series Sponson Kit

- Race proven Pro-Series Sponsons will dramatically improve the handling of your watercraft with their superior blade and backing plate design.
- Includes a bulletproof mounting system that features a solid backing plate and four anchor points with billet aluminum inserts in sponson fins.
- Sponson depth is adjustable to control the amount of influence they have on the craft.
- Easy installation, uses original mounting studs.

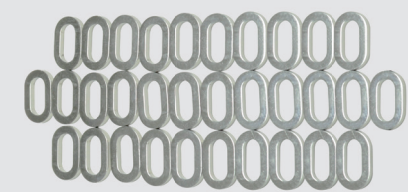
SPARK

295100847 1578 zł



Deck Hardware Upgrade Kit

- Sturdy stainless steel washer kit directly replaces the original plastic deck washers.
- Provides an awesome cosmetic upgrade along with increased durability.
- Precision machined washers are electropolished, providing excellent fit and finish.
- A must for repeatedly removing and replacing your deck for regular maintenance and inspection.

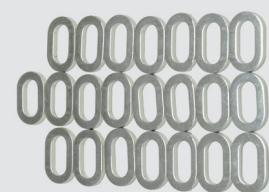


Front and Rear Deck

- Includes 31 washers for front and rear deck, plus one extra washer.

SPARK

295100849 315 zł



Main Deck

- Includes 22 washers for main (center) engine access deck, plus one extra washer.

SPARK

295100848 263 zł

Performance Accessories give your SPARK an edge on extra excitement

Anti-Debris Water Intake Grate

(Not illustrated)

- Protects jet pump assembly and cooling system by blocking rocks and debris larger than 0.39" (10 mm).
- Helps avoid damage and premature wear of the impeller and the wear ring.
- Also helps reduce algae accumulation.
- Recommended if watercraft usage includes frequent beaching or shallow and swift water riding.
- Expect a slight performance reduction.

GTL, GTS and WAKE (2011-2019)

271001948 1844 zł

Stainless Steel Wear Ring

- Strong and durable stainless steel replacement wear ring.
- Resists debris damage and corrosion.
- Recommended if watercraft usage includes frequent beaching or shallow and swift water riding.
- Direct replacement and easy press-in installation.

Note: Please contact your nearest Sea-Doo dealer for suggested retail prices of those products.

GTL, GTS, WAKE,

GTX, 130, 155 and 170

(2011 and up)

267000800 1456 zł

SPARK

295100649

1163 zł

GTR 215 (up to 2016), RXT and GTX 260 (2009-2017), RXT and GTX 230 (2017-2018), RXT and GTX 215 (2009-2017)

296000431 1456 zł



Some products may not be available or homologated in your region. Contact your dealer for more information.

Tech Accessories



Your music, anywhere

Listen to your music in, on, or off the water with our portable, removable, and fully submersible audio system.

BRP Audio-Portable System

- 50 watt audio system with Bluetooth[®] connectivity.
- Fully submersible and removable, can be used on and off the watercraft.
- Front mounted and positioned toward driver for maximum sound clarity.
- Control pad on the speaker for volume and song adjustment.
- Powered with a rechargeable lithium battery that offers 24 hours* of autonomy.
- Support base with quick-attach system is required (295100913).
- Front Deflector Replacement Lid (295100870) is required when installing the sound system on 2018 and prior models with iBR and Convenience Package or when the Front Storage Bin Kit (295100864) or the Front Deflector Lid Kit (295100865) is installed.
- Adjustable Riser Retrofit Kit (295100702) is required to install on SPARK (2016 and prior).

SPARK
295100867

Front Deflector Replacement Lid

- Required when installing the BRP Audio-Portable System (295100866) on SPARK with iBR and Convenience Package (2018 and prior).
- Also needed when the Front Storage Bin Kit (295100864) or the Front Deflector Lid Kit (295100865) are installed on the watercraft.
- Included on 2019 models equipped with the same feature.

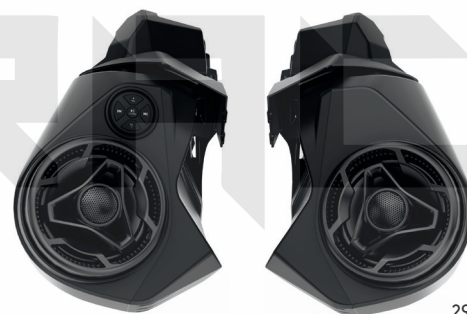
295100870



BRP Audio-Portable System Support Base

- Required to install the BRP Audio-Portable System (295100866).

SPARK
295100913



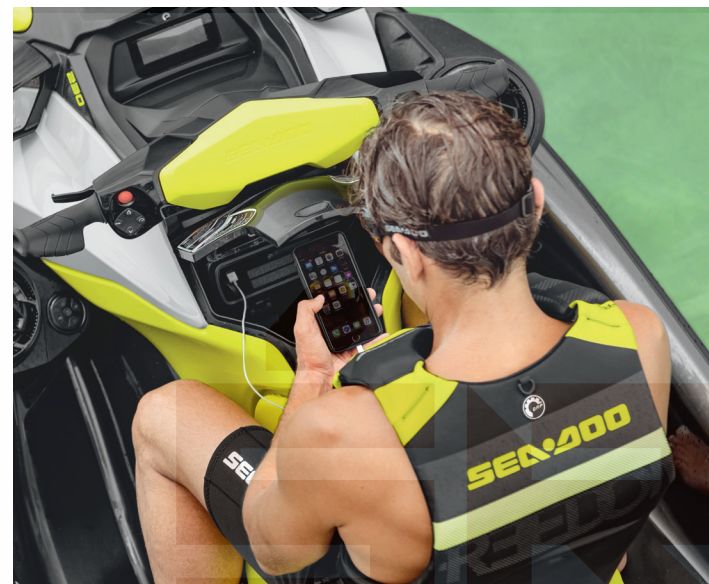
BRP Audio-Premium System

- Fully integrated audio system with Bluetooth connectivity.
- Fully submersible.
- Two powerful 50 watt speakers for music clarity, even while riding.
- Remote control pad on left speaker to quickly and easily change songs and volume.
- Music will play even after engine is turned off.
- Need harness (278003684) if installed with the Garmin Echomap Plus 62cv Fish Finder.

RXT, RXT-X, GTX, WAKE PRO (2018 and up), FISH PRO
295100711

New! GTI, GTI SE, GTR and WAKE 170 (2020)
295100839

295100711

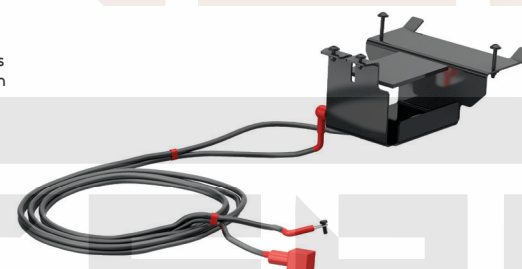


Secondary Battery Harness Kit

- Allows you to add a second unit to your dual battery setup.
- Will give you the extra juice you'll need to power electrical components like the BRP Audio-Premium System or Garmin Echomap Plus 62 cv Fish Finder for longer periods.
- Kit includes necessary wiring and battery holder.
- Additional battery sold separately (410301203).

RXT, RXT-X, GTX and WAKE PRO (2018 and up), FISH PRO
295100792 632 zł

New! GTI, GTI SE, GTR and WAKE 170 (2020)
(Not illustrated)
295100859 406 zł

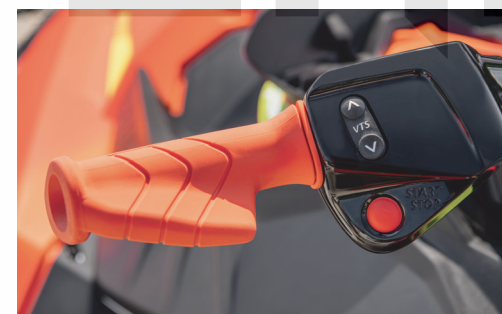


Extended Range Variable Trim System (VTS)

- This Sea-Doo exclusive accessory lets you exaggerate how high you can raise the nose or how deep you can bury it in the water.
- The extended range VTS doubles the range of adjustment compared to our current standard VTS.
- Adjustments are instantaneous thanks to the quick activation switch mounted on the handlebar to allow fine tuning of the watercraft trim angle while riding.
- Simple plug-in connection, and includes switch, cap and hardware necessary for installation.
- Standard on SPARK TRIXX.

SPARK with iBR (2017 and up - full extended range), (2016 and prior - stock range)

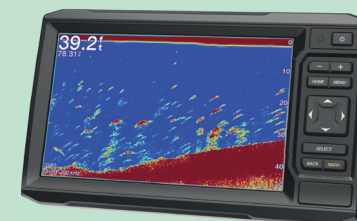
295100704 1052 zł



Provides preset positions for quick settings when adjusting the watercraft trim. When you trim up, you'll have a drier ride, which helps when towing. When you trim down, you can ride more aggressively while staying glued to the water.

Some products may not be available or homologated in your region. Contact your dealer for more information.

Electronics and Electricals



Garmin ECHOMAP Plus 62cv Fish Finder

- Allows riders to enjoy top-of-the-line navigation charts as well as fish finding technology.
- Bright, sunlight-readable 6" (15.2 cm) monitor.
- Includes world basic maps.
- Use built-in Wi-Fi[®] to pair with the free ActiveCaptain[®] app for access to OneChart[®], smart notifications, Garmin Quickdraw[®] Community data and more.
- Share waypoints and routes with other ECHOMAP or STRIKER[®] units.
- Need harness (278003684) if installed with the BRP Audio-Premium System.
- Standard on FISH PRO models.

Includes transducer for Garmin CHIRP[®] traditional sonar.

RXT, RXT-X, GTX, WAKE PRO (2019 and up), GTI, GTI SE, GTR and WAKE 170 (2020)
295100801 5458 zł

Transducer not included. Provides GPS functions only.

RXT, RXT-X, GTX, WAKE PRO (2019 and up), GTI, GTI SE, GTR and WAKE 170 (2020)
295100871 3514 zł

RXT, RXT-X, GTX, WAKE PRO (2019 and up), GTI, GTI SE, GTR and WAKE 170 (2020)
295100921 5270 zł

* For 2018 models, see your certified BRP dealer to validate compatibility.

*Based on BRP internal testing at approximately 50% volume. Battery life may vary depending on operating conditions, including but not limited to temperature.

Electronics and Electricals



Accessories / 16



Battery Charger/Maintainer

- Fully automatic 3 amps battery charger/maintainer.
- Keeps stored lead-acid batteries charged.
- Charges and maintains small batteries.
- Microprocessor controlled multi-stage charging for added precision, safety and battery life.
- Auto-voltage detection.
- Automatically detects 6 or 12 volts batteries.
- Float mode monitoring automatically maintains optimum battery charge.
- Reverse hook-up protection helps protect

CTEK BRP 5.0 Charger

860200997 543 zł

- battery and charger from damage.
- Hook attachment hangs outside the work area for safety and convenience.
- Display/on button.
- Press the display button to show the charge progress.
- Meets the highest industry standards for energy efficiency/eco friendliness.
- Content: 3 amps battery charger, clamp adapter, DC ada pter, 24" fused ring leads harness with weather cap, owner's manual.
- North America plug (110 V)



RF D.E.S.S.™ Key

- Anti-theft technology for the marine world.
- Digitally Encoded Security System (D.E.S.S.) key's balland-socket design provides riders with easy and quick starts every time.
- A radio frequency chip inside the key communicates with the vehicle wirelessly, so your SPARK starts only when the key code matches the vehicle, for ultimate peace of mind.
- Unlike previous D.E.S.S. keys, harness now sold separately.



SPARK

295100712 532 zł

Part numbers you will also need for installation:

2016 and prior:
278003491, 399 zł
295100702 532 zł

2017 and up:
278003491 399 zł

SPARK with iBR

*Intelligent Brake and Reverse (iBR).

2016 and prior:
278003490, 399 zł
295100702 532 zł

2017:
278003490 399 zł

2018 and up:
278003823 399 zł



Learning Key Lanyard

- Reduces the speed of your watercraft and allows less experienced riders to learn gradually.

DI and 4-TEC models (2014 and prior)
278002203 314 zł



D.E.S.S. Floating Safety Lanyard

- Replacement D.E.S.S. lanyard.

All models (2014 and prior)
278002199 297 zł



12-Volt Outlet and Installation Kit

- Use this 12V outlet to charge your phone or GPS unit.
- Equipped with waterproof cover to prevent water infiltration.

GTX and RXT without suspension (2015 and prior), WAKE PRO (2015 and prior)
295100612 302 zł

GTX and RXT without suspension and WAKE PRO (2016-2017)
295100675 306 zł

SPARK, GTI, GTS, GTR, WAKE 155 and RXP-X
295100577 297 zł

Ski and X Package Module

(Not illustrated)

- One module that includes both Ski and X Package functions:
 - Activates ski mode: Offers a choice of different preset acceleration curves for perfect launch every time when towing a skier or wakeboarder, plus steady tow speed.
 - Activates X Package functions on gauge: average and top speed/RPM display unlocks launch mode control and the complete VTS range (50% more range).
- User-friendly interface on gauge.
- Simple plug-in connection.
- Includes hardware necessary for installation.

RXT, RXT-X, GTX and WAKE PRO (2018 and up), FISH PRO

295100857 792 zł

X Package Module

(Not illustrated)

- Activates X Package functions on gauge: lap timer, fuel time and distance to "empty", average and top speed/RPM display, and engine temperature.
 - User-friendly interface on gauge.
 - Simple plug-in connection.
 - Includes hardware necessary for installation.
- Note: Harness (278002569) and 3 amps. fuse (710001008) are required to install on 2011 to 2017 models.

GTI, GTS, GTR and WAKE 155 (2017 and up), GTX, RXT and WAKE PRO (2018 and up)

295100757 715 zł

Ski Module

(Not illustrated)

- Activates ski mode.
 - Offers a choice of different preset acceleration curves for perfect launch every time when towing a skier or wakeboarder, plus steady tow speed.
 - User-friendly interface on gauge.
 - Simple plug-in connection.
 - Includes hardware necessary for installation.
- Note: Harness (278002569) and 3 amps. fuse (710001008) are required to install on 2011 to 2017 models.

GTI, GTS and GTR (2017 and up), GTX, RXT and RXT-X (2018 and up)

295100756 715 zł

Depth Finders

- Display the water depth below the hull.
- Plug-and-play connection.
- Standard on GTX Ltd models.

Model	Year	2148 zł 295100324	2148 zł 295100332	2038 zł 295100679	2038 zł 295100927	1968 zł 295100872
SPARK	2014 and up*			•		
GTI/GTS	2008-2010	•		•		
GTI/GTS (900 HO) (Polytec™ hull)	2017-2019			•		
GTI/GTR/GTR-X (Fiberglass hull)	2011-2017			•		
	2018-2019				•	
GTI (Polytec hull)	2019**				•	
WAKE	2011-2017			•		
	2018-2019**				•	
GTI/GTI SE/GTR/ WAKE 170	2020					•
GTX	4-TEC engine (2009 and prior, except 2002)	•				
	2010		•			
	2011-2017			•		
	2018 and up					•
GTX iS/S/aS	2010 and prior		•			
	2011-2017			•		
GTX Ltd	2011-2017			•		
	2018 and up					•
RXT/RXT-X	4-TEC engine (2009 and prior, except 2002)	•				
	2010		•			
	2011-2017			•		
	2018 and up					•
RXT iS/RXT-X aS	2011-2016			•		
RXP/RXP-X	2012-2017			•		
	2018 and up					•
WAKE PRO	2010 and prior		•			
	2011-2017			•		
	2018 and up					•

* Electric Connection Kit (295100599) required for installation.

** Mounting Bracket (278002495) required for installation.

Electric Connection Kit

(Not illustrated)

- A very convenient and safe way to add electrical accessories.
- Plug-and-play connection.
- Required in order to install the Depth Finder on specific models (Refer to the Depth Finders table).

Models on Polytec Hull
295100599

Electronics and Electricals

Bilge Pump Kits

- Keeps engine compartment dry.
- Includes bilge pump, mounting bracket, bilge fitting, hose and hardware necessary for installation.

Model	Year	671 zł 295100497	704 zł 295100634	737 zł 295100678	731 zł 295100681	731 zł 295100739
SPARK	2014 and up	•				
GTI/GTI SE/ GTS/GTR (Fiberglass hull)	2011-2019				•	
GTI/GTS (Polytec hull)	2011-2019	•				
WAKE	2011-2017*				•	
	2018-2019	•				
GTI/GTR/WAKE	2020					•
FISH PRO	2019 and up					•
GTX	2010-2015**				•	
	2015**		•			
	2016-2017			•		
	2018 and up					•
RXT/RXT-X	2010-2015**				•	
	2015**		•			
	2016-2017			•		
	2018 and up					•
RXP-X	2012-2015**				•	
	2015** and up			•		
WAKE PRO	2010-2015**				•	
	2015**		•			
	2016-2017			•		
	2018 and up					•

For 2014* and 2015** models, see your certified BRP dealer to match the right kit to your watercraft.

Accessories / 17

Body Accessories



Make extended
rides more
comfortable
than ever



Ergolock Knee Pads

- Allow you to rest your knees on a comfortable pad.
- Help keep your legs locked in place on the Ergolock System.
- To be combined with the Floorboard Wedges for improved balance on the vehicle.

RXT, RXT-X, GTX and WAKE PRO (2018 and up), FISH PRO
295100744 · Silver 632 zł
295100804 · Black 632 zł

New SPARK
295100810 · Black 609 zł



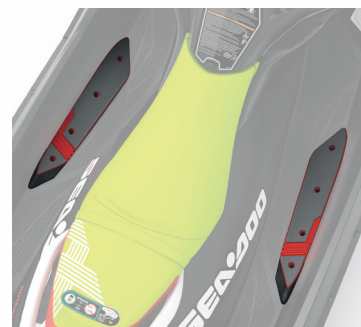
295100810

Floorboard Wedges

- Designed for high performance riding, extended angled floorboard wedges will keep all riders and passengers firmly planted, comfortable and secure.
- When used in conjunction with our Ergolock Knee Pads, the wedges ensure everyone can enjoy the full capabilities of the watercraft.

RXT, RXT-X, GTX and WAKE PRO (2018 and up)
295100745 488 zł

New SPARK
295100875 469 zł

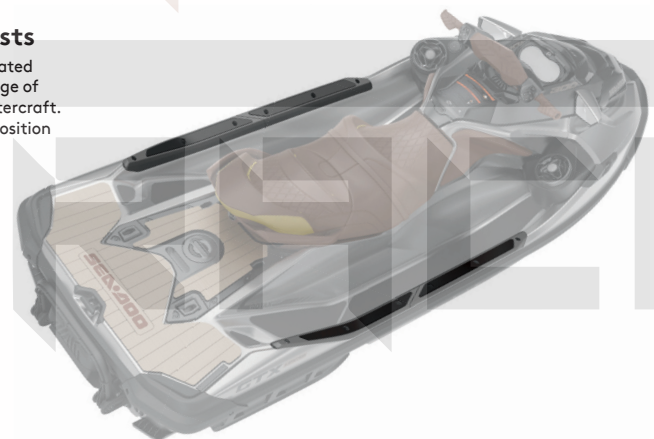


295100875

Angled Gunwale Footrests

- 4' long angled footrests with integrated mats, fixed on the upper outside edge of the footwell on each side of the watercraft.
- Provide a comfortable and secure position for the feet and legs while fishing from the side of the watercraft.
- Protect the paint finish on the edge of the footwells from abrasion caused by fishing.
- Standard on FISH PRO models, in Mango Orange version.

RXT, RXT-X, GTX and WAKE PRO (2018 and up), FISH PRO
295100793 · Black 532 zł



Side Protectors

- This 6-piece rubber formed protectors are specifically designed for the SPARK.
- Its curves and angles follow the lines of the watercraft to enhance the look while protecting it from small impacts and wear.
- Doesn't get in the way of Snap-in Fenders or any maintenance you need to perform.

SPARK
295100575 743 zł



Body Accessories



Fits all
watercraft
colorations

New

Fishing Seat

- Designed for ease of movement from driver position to passenger for fishing.
- Optimized for fishing facing sideways with increased lateral stability when combined with the Angled Gunwale Footrests (295100793).

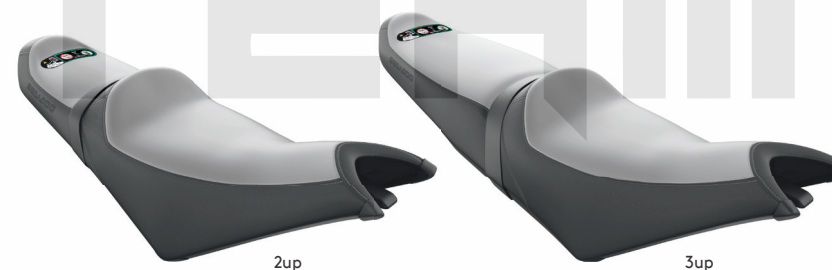
RXT, RXT-X, GTX and WAKE PRO (2018 and up)
295100882 3451 zł



Mirrors

- Durable and rugged construction for withstanding rough riding conditions.
- Perfectly integrated to the vehicle.
- Convex lens for wide angle view.
- Sold in pairs.

SPARK
295100881 587 zł



2up

3up

Comfort Seat

- Seat specially designed to increase riding comfort on extended rides.
- Features a formed and larger sitting surface for better weight spread and stability in rough water.
- Constructed with soft foam.
- Direct replacement of the standard seat.

SPARK 2up
295100893 1218 zł

SPARK 3up
295100894 1421 zł



SPARK Panel Kit

- Pump up your SPARK with colorful panel kit.
- Kit includes: 3 panels, SPARK decals, BRP logo and required hardware.

SPARK

● 295100627 · Blueberry 2314 zł ● 295100613 · Bubble Gum 2276 zł
● 295100628 · Key Lime 2314 zł ● 295100615 · Orange Crush 2276 zł
● 295100674 · Chili Pepper 2314 zł ● 295100617 · Pineapple 2276 zł

Some products may not be available or homologated in your region. Contact your dealer for more information.

Docking

Quick and secure

Safeguard your ride in between rides with Sea-Doo Snap-in Fenders and Speed Ties.



Snap-in Fenders

- Protect your investment from dock damage with these easy to install and remove fenders designed specifically for Sea-Doo watercraft.
- Front and rear on the SPARK models ensure a solid mount in the optimal spot.
- The Snap-in Fenders float and the high-visibility orange color keeps them in sight.
- Requires Snap-in Fenders Installation Kit (295100550 or 295100729) to install on models other than SPARK.
- Patent pending.
- Sold in pairs.

Fit on all watercraft, except GTI, GTI SE, GTR and WAKE PRO (2020).

295100418 587 zł



Snap-in Fenders Installation Kit

- Lets you enjoy the fastest, easiest way to install protective fenders on your watercraft.
- Not required for SPARK models.

All watercraft with iBR except RXP-X, GTI, WAKE, GTR and GTS (2011-2019), GTX, RXT, RXT-X, WAKE PRO (2008-2017).

295100550 116 zł

RXT, RXT-X, GTX and WAKE PRO (2018 and up), FISH PRO

295100729 132 zł



295100550

295100729

Sea-Doo Speed Tie

- Fully-integrated watercraft mooring system, providing the ultimate in convenient, quick and secure docking.
- A must-have accessory that frees up storage space and ensures you have a dock line at all times.
- Stores 5½' (1.7 m) of rope and locks to desired length.
- Standard equipment on the GTX Ltd models (2017 and prior).
- Sold in pairs.

SPARK

295100496 1274 zł

RXP-X (2012-2017), GTR-X (2017), RXT-X (2015).

295100466 919 zł

GTR (2012-2019), GTI, GTI SE and GTS (2011-2019), GTX without suspension (2010-2017), WAKE PRO (2017 and prior), RXT and RXT-X without suspension (2010-2017), WAKE 155 (2010-2019).

295100680 1263 zł

Sea-Doo Speed Tie for Dock

(Not illustrated)

- Same exclusive mooring system available as a watercraft accessory, adapted for dock mounting.
- Provides quick and secure mooring for all watercraft, eliminating excessive rope on deck.
- Bolts directly to dock.
- Stores 5½' (1.7 m) of rope and locks to desired length.
- Sold individually.

295100336 587 zł



Folding Anchor

- 3.5 lb (1.6 kg) grapnel folding anchor with protective coating.
- Perfect for temporary mooring of watercraft and small boats in mud, sand, gravel, and rock.
- Includes a 25' (7.62 m) marine-grade rope with an in-line buoy, heavy-duty stainless steel snap hook, and a nylon storage case.
- Compact enough for the storage compartment.

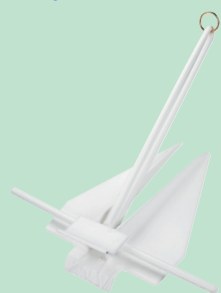
295100750 263 zł



Sandbag Anchor

- Made of 600-denier solution-dyed yellow polyester fabric capable of holding an estimated 45 lb (20 kg) of wet sand.
- Measures 15 ¾" x 9" (40 cm x 22.9 cm).
- 16' half-inch nylon strap (4.9 m x 1.3 cm).
- Plastic hook attachment and molded floater.

295100661 261 zł



Anchor

- 11 lb (5 kg) fluke-style anchor with slip ring provides sure grip.

295100046 338 zł

Docking

Keep things simple with an ultra-convenient sandbag anchor. Fill, stop, and drop!



Dock Tie

- Moor your watercraft with this floating Sea-Doo shock cushioned nylon rope.
- Provides security to keep your watercraft and dock attached.
- One per package.

295100851 153 zł



Manual Reverse Kit

- This kit can be easily added to your SPARK and will help immensely in docking maneuvers and trailer loading.
- A lever located on the left side makes it easy to engage reverse and avoid the need for aggressive or dangerous maneuvers.

SPARK without iBR

295100596 1534 zł

Fender

- Polyform strength and dependability with a vinyl valve system for quick, flexible adjustment of firmness.
- One 16" fender and one rope per package.

295100877 189 zł



Some products may not be available or homologated in your region. Contact your dealer for more information.

Riding Essentials



LinQ Fuel Caddy

- Designed for easy pouring.
 - 4 US Gal (15 L) capacity.
 - Allows the LinQ Watertight Bag (715002875) to stack on top for more storage.
 - Already maritized for saltwater purposes.
 - LinQ Base Installation Kit is required to install LinQ accessories when not standard on the watercraft.
- Note: Fuel caddies cannot be stacked.

Models with LinQ Base Kit
295100752 947 zł



LinQ Fuel Caddy Replacement Rubber Cap

(Not illustrated)
295100791 140 zł

LinQ Fuel Caddy Replacement Cap and Nozzle

(Not illustrated)
860202130

Safety Equipment Kit

- This kit includes all the essentials for your watercraft.
- 50' (15 m) of buoyant heaving line, bailer, whistle and watertight flashlight.

295100330 95 zł



Whistle

- "Pea-less" whistle.
- Produces an extremely loud, high, penetrating sound that can be heard over long distances.

- Unaffected by water; just clear with one quick blow.
- 295500554 47 zł



Fire Extinguisher

- A requirement for any watercraft.
- Designed to fit in any fire extinguisher case holder.
- Ideal for grease, oil and electrical fires.
- US and Canadian Coast Guard approved.
- Not CE compliant

295100833 · White



Registration Kit

- (Not illustrated)
- High-quality UV-resistant registration kit.
- Easy to install without deformation, with a glue that will adhere to all surfaces, including SPARK.
- Available in two contrasting colors that meet mandatory regulations for height and size.

All watercraft

3" (7.6 cm) 4" (10.2 cm)
295100570 · Black 153 zł 295100578 · Light Grey 149 zł
295100631 · Black 186 zł

Take the Sea-Doo Life online

Explore the complete Sea-Doo lineup and more must-haves for perfect days on the water.
Visit brppac.com.

Controls and Grips



Wetsuits and Rashguards



PFDs



Bags and Storage



LinQ Accessories



Docking Accessories

Covers



Choose the cover perfectly suited to your watercraft

A cover protects your Sea-Doo watercraft from the elements and helps preserve its finish.



Sea-Doo Covers

KEY FEATURES

- ✓ Weather-resistant cover protects your watercraft during storage and trailering.
- ✓ Made of heavy-duty UV-resistant solution-dyed polyester canvas.
- ✓ Soft inner lining prevents panel abrasion.
- ✓ Areas prone to higher wear are reinforced with a layer of double canvas.
- ✓ A perfect fit for your watercraft, with or without installed Sea-Doo accessories.
- ✓ Standard with GTX Ltd models.

- 1 Yellow fabric indicates handle insertion points.
- 2 Zippered openings allow easy access to mooring cleats.
- 3 Zippered opening permits easy access to the glove box, front storage and for refueling.
- 4 Zippered opening accommodates LinQ accessories on the rear deck with the cover in place.
- 5 Patented air release vent system for trailering.
- 6 Side hooks secure the cover while trailering.
- 7 Zippered opening allows the use of tie-downs for securing covered watercraft on the trailer.

Features may vary depending on watercraft model cover.



295100873



295100724



280000460, 295100718, 295100719



295100722



295100720



295100912, 295100789

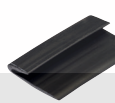
Cover Replacement Hooks

All models (2017 and up).
295100754

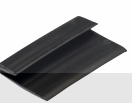
All models (2016 and prior).
295100407



295100754



295100407



295100815

Fits		Opening to accommodates LinQ accessories	Easy access to the gas cap and storage bin	Convenient openings for easy access to the speed tie	Colors	SKU	Price
GTX, RXT models with suspension	GTX S, GTX Ltd S (2012-2017)			•	Black/Light Grey	295100718	1218 zł
	RXT is, GTX is, GTX Ltd is (2009-2016)			•		280000460	1235 zł
	RXT-X aS (2011-2016)					280000586	1246 zł
GTX, RXT, WAKE PRO, FISH PRO models without suspension	RXT, RXT-X, GTX and WAKE PRO (2018 and up)	•	•		Black	295100874	1263 zł
	GTX S, GTX Ltd, RXT, RXT-X (2010-2017)			•	Black/Light Grey	295100719	1218 zł
	WAKE PRO (2010-2017)				Black	295100720	1218 zł
	FISH PRO	•	•		Black	295100873	1263 zł
RXP-X, GTR-X models	RXP-X (2012 and up)			•	Black/Light Grey	295100721	1218 zł
	GTR-X (2017-2019)			•			
GTS, GTI, GTR, WAKE models	GTS, GTI, GTI SE, GTI Ltd (2011-2019)			•	Black/Light Grey	295100722	1218 zł
	GTR (2012-2019)			•		295100723	1218 zł
	WAKE (2011-2019)			•		295100724	1218 zł
	GTI, GTI SE, GTR and WAKE 170 (2020)	•	•		Black	295100815	1265 zł
	SPARK 2up (Compatible with Adjustable Riser, BRP Audio-Portable System Support Base and LinQ accessories)	•	•	•	Black	295100912	1218 zł
SPARK models		•	•	•		295100789	1213 zł
SPARK 3up (Compatible with Adjustable Riser, BRP Audio-Portable System Support Base and LinQ accessories)							

Note: For prior model years, ask your dealer for details.
Some products may not be available or homologated in your region. Contact your dealer for more information.

Sea-Doo trailers



Click & Go Trailer

Soft design that protects the user and the craft, with no sharp angles that can break the skin or the bottom of the craft.

Key Features

- Clever, patented Click & Go locking mechanism for Spark.
- No tie-down straps needed for securing the craft.
- Optimized for all Spark models (1+1 and 1+2), no need to adjust supports or the attachment.
- The total weight of the trailer (400 kg) makes it possible to tow it even with small vehicles.

Sea-Doo trailers



Single Trailers

Sea-Doo Spark Click & Go Trailer

- Robust attachment
- No need for separate supports
- Easy to use
- Clever, patented Click & Go locking mechanism
- Hinged light boom protects the lights during launch and removal
- No need for tie-down straps
- Safe design
- Soft design protects the craft and the user

Overall length	390 cm
Overall width	160 cm
Total weight (makes it possible to tow the trailer even with small vehicles)	400 kg

For all Sea-Doo Spark models
619590207 (without brake)
619590338 (with brake)



Sea-Doo trailers

Single Trailers

Sea-Doo Big One Trailer

- No need for separate supports
- Easy to use
- Securing the watercraft using tie-down straps
- Safe, soft design that protects the craft and the user
- Removable light rack
- Tip-up light rack

Overall length	447 cm
Overall width	160 cm
Total weight	600 kg

For all Sea-Doo watercraft models
619590223 (without brake)
619590337 (with brake)

Roller Kit For Big One
(Not illustrated)
619590397



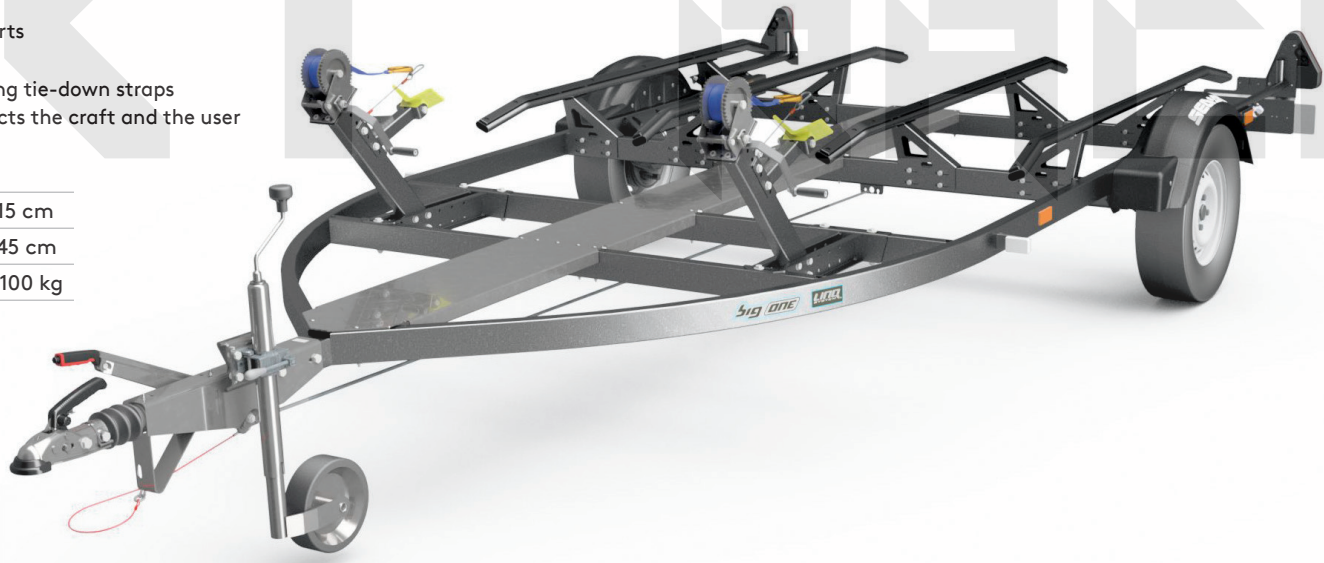
Redesigned PWC
rubber stopper

Sea-Doo Big Two Trailer

- No need for separate supports
- Easy to use
- Securing the watercraft using tie-down straps
- Safe, soft design that protects the craft and the user
- Tip-up light rack

Overall length	515 cm
Overall width	245 cm
Total weight	1,100 kg

For all Sea-Doo watercraft models
619590586 (with brake)



Double Trailers

Trailer
Key Features

	Single	Double
	Spark Click & Go Trailer	Big One Trailer
		Big Two Trailer
Robust attachment	•	•
No need for separate supports	•	•
Easy to use	•	•
Clever, patented Click & Go locking mechanism	•	
Hinged light boom protects the lights during launch and removal	•	
No need for tie-down straps	•	
Safe design	•	•
Soft design protects the craft and the user	•	•
Securing the watercraft using tie-down straps		•
Removable light rack	•	
Tip-up light rack		•

Sea-Doo trailers accessories



Ratchet Tie-Down

- Designed specifically for strapping a watercraft to a trailer.
- Custom 4-hook system is ideal for quick installation/ removal without separating strap from ratchet.
- Fingertip tension adjustment with deluxe ratchet.

All watercraft (except Sea-Doo SPARK)
295100389 116 zł

- 1" (2.5 cm) Sea-Doo branded polyester strap features hull protector pads, extra strap holder and coated hooks.
- Sold individually.



Ratchet Tie-Downs

- 400 lb (181 kg) safe working load.
- 1" x 10' (2.5 cm x 3 m) strap with Sea-Doo, Ski-Doo and Can-Am logos.

All watercraft
860200447 83 zł

- Deluxe ratchet with rubber handle.
- Coated S hooks.
- Pack of 2.



Bolt-On[†] Retractable Ratcheting Tie-Downs

- Perfect for transporting your watercraft or securing loads.
- Mounts easily: bolts on any flat surface (e.g. truck bed or frame).
- 1" x 6' (2.5 cm x 1.83 m) tie-down strap with heavy-duty stitching that delivers a 500 lb (226 kg) working load strength and 1,500 lb (680 kg) break strength.

All watercraft
295100737 158 zł

- Convenient retractable push button automatically slackens, spools and stores away strap, while the ratchet mechanism tightens the strap snugly to secure your vehicle or load into place.
- Rubber ratcheting handle provides firm grip, and the hook is vinyl coated to protect whatever surface it hooks into.
- Sold in pairs.

Sea-Doo Riding Gear

Functional. Comfortable. Attractive.

Innovative Sea-Doo riding gear is the perfect way to bring your Sea-Doo life beyond typical boundaries and live for days spent on the water.



PFDs

No matter your riding style, Sea-Doo has you covered. Choose from three categories of PFDs to suit your needs: the Ultimate, the Athletic or the All-Purpose PFDs.

P. 30



Wetsuits and Rashguards

Keeping you warm and comfortable no matter where the ride takes you. Wetsuits, rashguards and neoprene shorts are essential items to maximise your time on the water.

P. 37

Mesh uppers
and perforated
insoles for
fast water
evacuation



Eyewear

Light gets in, water stays out. Fun should always be that easy.

P. 40

Footwear

Protective on your ride, comfortable on the shore.

P. 41

Gloves

Ease of movement and a solid grip on all the fun you can handle.

P. 42



Riding Suit

Windproof, water-resistant, and quick-drying, our riding suit is versatile enough to fit any situation.

P. 36

Bags

Perfect carry-ons for keeping things organized, dry and handy.

P. 43



Sportswear

Make every moment look as good as you feel.

P. 44

The Ultimate

PVC-free and sustainable.
Feels light even when
wet and maximizes air
flow, because the more
comfortable you are,
the better and longer
you will ride.



Some products may not be available or homologated in your region. Contact your dealer for more information.



Men's Airflow PFD

285870 (US) · S, M, L, XL, 2XL, 3XL
285872 (EU) · S, M, L, XL, 2XL, 3XL
Black (90)

643 zł



Ladies' Airflow PFD

285873 (US) · S, M, L, XL, 2XL, 3XL
285875 (EU) · S, M, L, XL, 2XL, 3XL
Black (90)

643 zł



Back

Airflow PFD

TECHNICAL FEATURES



CE approved



Quick dry



Added
ventilation



Light even
when wet



Ease of
movement



Fitted

✓ Ultra-durable ecoprene
outer shell.

✓ Comfortable fit.

✓ YKK! front zipper.

✓ Soft, light and durable vest
interior constructed of eco-friendly
100% PVC-free biofoam.

✓ Side panels in stretch lining
fabric for improved comfort.

✓ Armholes cut large for
riding comfort.

✓ Loop at back neck to attach
your goggles to your vest.

✓ D-ring for key lanyard.

AIR FLOW SYSTEM

Interior EVA molding that
keeps the PFD surface
away from the skin.

LUMBAR COMFORT ZONE

Extra foam padding to
minimize the pressure
on your lower back while
bolstering support.

MESH PANEL

Drain away excess water
for quick drying and
thermal regulated comfort.

WATCH THE VIDEO
[sea-doo.com](https://www.sea-doo.com)



PFDs



The Athletic

Matches your active riding style, can handle rugged daily — and all-day — use. Snug-fitting and comfortable to intuitively shadow your body's movements, and roomy where it counts not to hinder your mobility.



Some products may not be available or homologated in your region. Contact your dealer for more information.



New

Men's Freedom PFD

286761 (US) · S, M, L, XL, 2XL, 3XL
286763 (EU) · S, M, L, XL, 2XL, 3XL
Red (30), Yellow (10)

487 zł

New

Ladies' Freedom PFD

286764 (US) · S, M, L, XL, 2XL, 3XL
286766 (EU) · S, M, L, XL, 2XL, 3XL
Aqua (76)

487 zł



New

Force Pullover PFD

- Ultra-durable neoprene outer shell.
- Soft PVC foam inserts.
- Anatomical cut with large armholes and strategically-placed mesh drain panels for riding comfort.
- YKK side zipper.
- Loop at back neck to attach your goggles to your vest.
- D-ring for key lanyard.

286758 (US) · XS/S, M, L, XL, 2XL/3XL
286760 (EU) · S, M, L, XL, 2XL
Black (90)

595 zł



CE approved



Warm against the skin



Ease of movement



Fitted

Freedom PFD

TECHNICAL FEATURES



CE approved



Quick dry



Light even when wet



Ease of movement



Fitted

- ✓ Ultra-durable ecoprene outer shell.
- ✓ Combination of PVC and polyethylene foam inserts.
- ✓ Comfortable fit.
- ✓ YKK front zipper.
- ✓ Loop at back neck to attach your goggles to your vest.
- ✓ D-ring for key lanyard.

- ✓ Segmentations at front and back for better comfort and ease of movement.
- ✓ Side panels in stretch lining fabric for improved comfort.
- ✓ Armholes cut large for riding comfort.

LUMBAR COMFORT ZONE

Extra foam padding to minimize the pressure on your lower back while bolstering support.

MESH PANEL

Drain away excess water for quick drying and thermal regulated comfort.



WATCH THE VIDEO
sea-doo.com



PFDs

Riding Gear / 35

PFDs

The All-Purpose

Combines great value with high quality components that won't compromise look, safety, comfort and functionality. Easy-fitting so it can be shared by a wide range of people, and versatile so it can be used for a variety of watersports.



Some products may not be available or homologated in your region. Contact your dealer for more information.



Men's Motion PFD

286767 (US) · M, L, XL, 2XL, 3XL, 4XL
286769 (EU) · S, M, L, XL, 2XL, 3XL, 4XL
Yellow (10), Red (30), Green (70), Blue (80) **298 zł**

Ladies' Motion PFD

286770 (US) · XS, S, M, L, XL, 2XL, 3XL, 4XL
286772 (EU) · XS, S, M, L, XL, 2XL, 3XL
Grey (09), Orange (12), Black (90) **298 zł**

Motion PFD

TECHNICAL FEATURES



CE approved



Low water absorption



Lightweight



Affordable and best value

- ✓ Heavy-duty polyester outer shell.
- ✓ Polyethylene foam inserts.
- ✓ Segmented foam at back bottom for increased comfort while seated (on men's model only).

- ✓ Custom fit based on your size.
- ✓ Armholes cut large for riding comfort.
- ✓ D-ring for key lanyard.

Loop at back neck to attach your goggles to your vest.



WATCH THE VIDEO
sea-doo.com/videos

PFDs



New

Navigator PFD

- Unisex, value-built PFD.
- Heavy-duty polyester outer shell.
- Dual-sized making it perfect for sharing.
- Polyethylene foam inserts.
- Armholes cut large for riding comfort.
- Loop at back neck to attach your goggles to your vest.
- D-ring for key lanyard.
- CE approved.

286773 (US) · XS, S/M, L/XL, 2XL/3XL, 4XL/6XL
286775 (EU) · XS, S/M, L/XL, 2XL/3XL
Orange (12), Black (90) **217 zł**

Junior

New

Jr. Motion PFD

- Heavy-duty polyester outer shell.
- Polyethylene foam inserts.
- Armholes cut large for comfort.
- CE approved.

286776 (US) · L (50-90 lb)
286778 (EU) · L (30-40 kg)
Orange (12) **217 zł**



S (0-30 lb)



M (30-50 lb)



L (50-90 lb)

New

Kids' Sandsea PFD

- Heavy-duty polyester outer shell.
- Polyethylene foam inserts.
- Armholes cut large for comfort.
- PFD size small comes with Coast Guard approved pillow. Certified for general boating use, not watercraft.
- CE EN395 standard
- Child/Infant/Youth with pillow
- Orange and Yellow only approved colors
- CE approved.

286779 (US) · S (0-30 lb), M (30-50 lb), L (50-90 lb)
286781 (EU) · S (10-15 kg), M (15-20 kg), L (30-40 kg)
Orange (12) **163 zł**

Find your perfect PFD

Choose from three categories of PFDs to suit your needs.



THE ULTIMATE

Incredible performance in an ultralight package.

THE ATHLETIC

Stays comfy when actively maneuvering.

THE ALL-PURPOSE

A fantastic all-rounder with great value.

Riding Gear / 38



Airflow

Men's • 285870 (US), 285872 (EU) **643 zł**
Ladies' • 285873 (US), 285875 (EU) **643 zł**

Black (90)

(US) • S, M, L, XL, 2XL, 3XL
(EU) • S, M, L, XL, 2XL, 3XL



Freedom

Men's • 286761 (US), 286763 (EU) **487 zł**
Ladies' • 286764 (US), 286766 (EU) **487 zł**

Men's • Red (30), Yellow (10)
Ladies' • Aqua (76)

(US) • S, M, L, XL, 2XL, 3XL
(EU) • S, M, L, XL, 2XL, 3XL



Force Pullover

286758 (US), 286760 (EU) **595 zł**

Black (90)

(US) • XS/S, M, L, XL, 2XL/3XL
(EU) • S, M, L, XL, 2XL



Motion

Men's • 286767 (US), 286769 (EU) **298 zł**
Ladies' • 286770 (US), 286772 (EU) **298 zł**

Men's • Yellow (10), Red (30), Green (70), Blue (80)
Ladies' • Grey (09), Orange (12), Black (90)

Men's (US) • M, L, XL, 2XL, 3XL, 4XL
(EU) • S, M, L, XL, 2XL, 3XL, 4XL
Ladies' (US) • XS, S, M, L, XL, 2XL, 3XL, 4XL
(EU) • XS, S, M, L, XL, 2XL, 3XL



Navigator

286773 (US), 286775 (EU) **217 zł**

Orange (12), Black (90)

(US) XS, S/M, L/XL, 2XL/3XL, 4XL/6XL
(EU) XS, S/M, L/XL, 2XL/3XL



Jr. Motion

286776 (US), 286778 (EU) **217 zł**

Orange (12)

(US) L (50-90 lb)
(EU) L (30-40 kg)



Kids' Sandsea

(US) 286779, 286781 (EU) **163 zł**

Orange (12)

(US) S (0-30 lb), M (30-50 lb), L (50-90 lb)
(EU) S (10-15 kg), M (15-20 kg), L (30-40 kg)

Riding Gear / 39

Some products may not be available or homologated in your region. Contact your dealer for more information.

Riding Suit

Function and comfort

Extend the season and prolong the days with these windproof, water-resistant, breathable and quick-dry light jacket and pants. Go from riding waves to the clubhouse with seamless style.



Men's Element Riding Jacket

440799 · S, M, L, XL, 2XL, 3XL
Black (90)

731 zł



Men's Element Riding Pants

441699 · S, M, L, XL, 2XL, 3XL
Black (90)

565 zł



Wetsuits / Rashguards

Style and warmth

Keeping you warm and comfortable no matter where the ride takes you.

Element Riding Jacket and Pants

TECHNICAL FEATURES

Element Riding Jacket

- ✓ 100% polyester.
- ✓ Light soft shell ergo design offers great comfort.
- ✓ Fit to be worn under the PFD.
- ✓ Slim fit to keep snug against the wind and keep warmth inside.
- ✓ 1 interior pocket.
- ✓ 2 exterior hand pockets.
- ✓ Soft micro poly-brushed interior for additional comfort.
- ✓ Velcro[®] tab at wrist for adjustment.

Element Riding Pants

- ✓ 100% polyester.
- ✓ Brushed-knit thermal fleece interior.
- ✓ Supratex at seat and knees for extra comfort and durability.
- ✓ Comfort waistband with adjustment buckle.
- ✓ 2 zippered exterior hip pockets.
- ✓ Lower side leg zipper to snug the ankle while riding.



Ladies' Element Riding Jacket

440798 · XS, S, M, L, XL, 2XL
Black (90)

731 zł



Ladies' Element Riding Pants

441622 · XS, S, M, L, XL, 2XL
Black (90)

565 zł

Montego Jacket and Pants

TECHNICAL FEATURES

- ✓ 3 mm neoprene.
- ✓ Athletic fit.
- ✓ Super stretch fabric at sides for better mobility.
- ✓ Flatlock stitch construction prevents chafing.

Montego Jacket

- ✓ Sea-Doo print at front and back.

Montego Pants

- ✓ Supratex at seat and knees for extra comfort and durability.
- ✓ High waisted flattering design (ladies').
- ✓ Sea-Doo print at calf.



Men's Montego Jacket

286725 · S, M, L, XL, 2XL
Red (30)

393 zł



Men's Montego Pants

286724 · S, M, L, XL, 2XL
Black (90)

449 zł



Ladies' Montego Jacket

286727 · XS, S, M, L, XL, 2XL
Aqua (76)

393 zł



Ladies' Montego Pants

286726 · XS, S, M, L, XL, 2XL
Black (90)

449 zł

Some products may not be available or homologated in your region. Contact your dealer for more information.

Wetsuits / Rashguards

Men's Neoprene Riding Jacket

- 2 mm neoprene jacket that will provide just the right amount of warmth and protection.
- Front zippered pockets.
- Cord adjustments at hood.
- Hook and loop adjustment at wrist.
- Sea-Doo print on front and hood.

286695 · S, M, L, XL, 2XL, 3XL
Red (30)

814 zł



Can be worn independently or over a PFD.

Men's Neoprene Long Sleeve Rashguard

- Super stretch 2 mm neoprene offers an athletic fit and excellent comfort and mobility.

286730 · XS, S, M, L, XL, 2XL
Red (30)

631 zł



Back bottom built ¾ zipper for easy on and off.

Men's Neoprene Shorts

- 2 mm neoprene.

286720
S, M, L, XL, 2XL, 3XL
Black (90)

209 zł



Ladies' Neoprene Shorts

- 2 mm neoprene.
- Sea-Doo print on back.

286721
XS, S, M, L, XL, 2XL
Black (90)



Escape Shorty Wetsuit

TECHNICAL FEATURES

- ✓ 3 mm neoprene.
- ✓ Glideskin[†] at arm and leg hems for sealing.



Open collar for ease of neck movement.

Back zipper.



Men's Escape Shorty Wetsuit

286722 · XS, S, M, L, XL, 2XL, 3XL
Red (30)

565 zł



Ladies' Escape Shorty Wetsuit

286723 · XS, S, M, L, XL, 2XL
White (01)

565 zł



Sea-Doo Dry Suit

- T-ZIP waterproof front zipper (plastic)
- 1 chest pocket - Sealed seams
- Non-slip material at seat and friction printing
- Elastic at back waist
- Adjustable wrists
- Adjustable and removable hood
- Neoprene collar and sleeve-ends
- Integrated boots
- D-ring killer loop at waist right side

100% Nylon
440846 · S, M, L, XL, 2XL
Yellow (10)

4665 zł



Sea-Doo Thermal Gloves

90% Neoprene, 10% Nylon
446319 · M, L, XL
Black (90)

267 zł



Sea-Doo Thermal Top/ Pants

95% Nylon, 5% Spandex
454216 · S, M, L, XL
454217 · S, M, L, XL
Black (90)

105 zł
322 zł



Sea-Doo Thermal Hood

90% Neoprene, 10% Nylon
447702 · M, L, XL
Black (90)

127 zł

Wetsuits / Rashguards

Sea-Doo Short Sleeve Rashguard

- ✓ Athletic fit.
- ✓ SPF 50+ UV Lycra protection.



Men's

286731
XS, S, M, L, XL, 2XL
Red (30), Black (90)

183 zł



Ladies'

286732
S, M, L, XL
Red (30), Black (90)

183 zł



New

Men's Long Sleeve Rashguard

- Relaxed fit.
- SPF 50+ UV Lycra protection.

454293 · XS, S, M, L, XL, 2XL
Grey (09), Blue (80)

253 zł

Some products may not be available or homologated in your region. Contact your dealer for more information.

Eyewear

Eyewear that's made for the water



New
Sea-Doo Riding Goggles

- Anti-fog colored chrome lenses.
- Indirect ventilation frame.
- Adjustable strap system.
- Goggles-to-PFD attachment safety cord.
- Optional Riding Goggles RX Insert (448624) (Sold separately).

448623 · One size
Silver (08), Orange (12), Green (70)
460 zł

Add your
prescription.



New
Riding Goggles RX Insert

- Designed for the Sea-Doo Riding Goggles (448623).
- Go to your optics store and most will be able to fit prescription lenses tailored to your needs.

448624 · One size
Clear (00)
136 zł



New
Sea-Doo Floating Sunglasses

- Polarized colored chrome lenses.
- Air-injected arms for floatability and light weight.
- Adjustable safety strap system.

448622 · One size
Silver (08), Orange (12), Green (70)
352 zł

Sea-Doo Riding Boots and Water Shoes

TECHNICAL FEATURES

- ✓ Antimicrobial treatment.
- ✓ Lightweight EVA midsoles.
- ✓ All-around protective urethane coating.
- ✓ Mesh uppers and perforated insoles for fast water evacuation.
- ✓ Non-slip and non-marking outsoles.



New
Sea-Doo Water Shoes

- Amphibian low cut shoes that offer protection on the water and running shoe look outside the water.

444242 · 7, 8, 9, 10, 11, 12, 13
Charcoal Grey (07)
454 zł



New
Sea-Doo Riding Boots

- Made for performance riding, these amphibian mid cut boots will allow you to ride hard while protecting your ankles from impacts against the hull.

444243 · 7, 8, 9, 10, 11, 12, 13
Black (90)
505 zł



Sea-Doo Neoprene Boots

- 5 mm double-glued and blind stitched neoprene construction.
- Non-corrosive heavy-duty zipper.
- Flexible rubber toe and heel protection caps.
- Molded outsole with non-slip tread design.
- Anti-slip insole.

286702 · 5, 6, 7, 8, 9, 10, 11, 12, 13 · Black (90)
336 zł

Some products may not be available or homologated in your region. Contact your dealer for more information.



New
Sea-Doo Carbon Flip-Flops

- Soft synthetic strap.
- Lightweight and comfortable sole.
- Anti-slip outsole design.

444245 · 7, 8, 9, 10, 11, 12, 13 · Black (90)
163 zł



New
Sea-Doo Parlee Flip-Flops

- Soft synthetic strap.
- Lightweight and comfortable sole.
- Anti-slip outsole design.

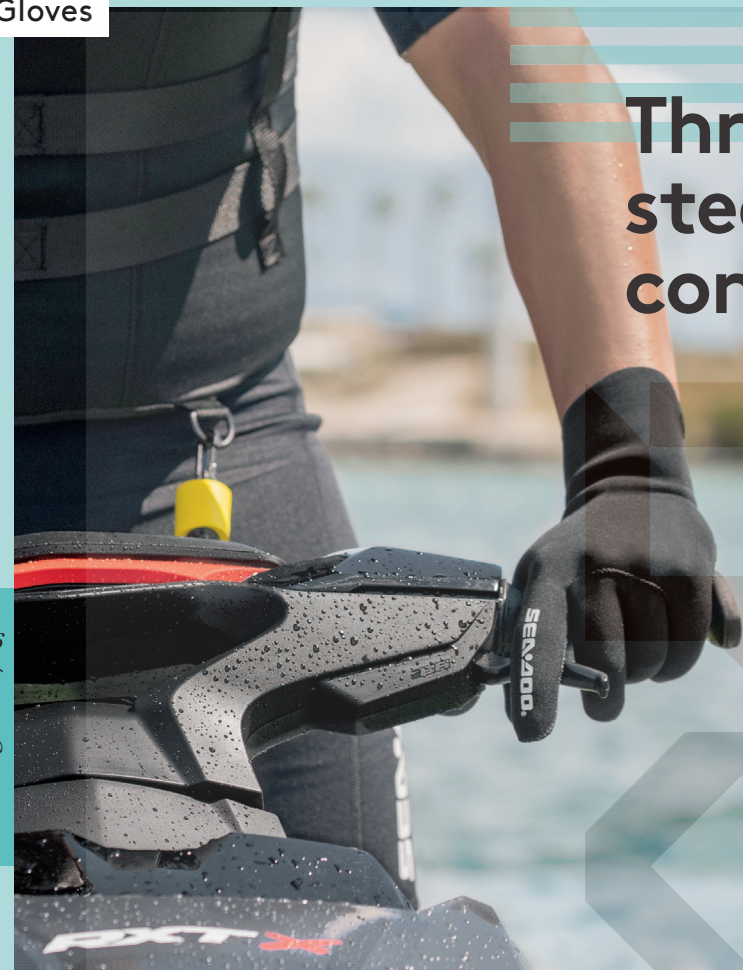
444246 · 7, 8, 9, 10, 11, 12, 13 · Brown (04)
163 zł

*For European footwear equivalencies, see p.47.

Footwear



Gloves



Throttle and steer with confidence



Neoprene Gloves

- 1.5 mm super stretch neoprene for superior comfort and mobility.
 - Anti-slip rubberized print at palms.
 - Pre-shaped fingers.
- 90% Neoprene, 10% Nylon
286729 · XS, S, M, L, XL, 2XL
Black (90)

252 zł



Attitude Gloves

- Gloves with spandex finger gussets and stretch fabric for ease of movement.
- Double stitching in high stress areas for durability.
- Clarino® Nash palm material and rubberized Pro-Grip at palm to ensure a solid hold.
- Adjustable Velcro wrist closure.

45% Polyurethane, 35% Polyester,
15% Lycra Spandex, 4% Polyamid,
1% Chloroprene Rubber



Attitude Full-Finger Gloves

286687 · XS, S, M, L, XL, 2XL, 3XL
Black (90)

168 zł



Attitude Shorty Gloves

286688 · XS, S, M, L, XL, 2XL, 3XL
Black (90)

140 zł

Sea-Doo Carrier Dry Backpack by Ogio

TECHNICAL FEATURES

- 1 Completely waterproof roll-top construction.
- 2 Quick-access front zippered stash pocket.
- 3 Organization panel with 2 zippered pockets inside. Laptop and tablet sleeves.
- 4 Removable high visibility liner.
- 5 Dual-density shoulder straps for comfort.
- 6 2-way adjustable sternum strap.
- 7 360-degree reflective screen print.
- 8 Air flow back panel keeps the rider cool.
- 9 Off-center removable hip belt.



Sea-Doo Dry Backpack by Ogio

- Strap containment system ensures all straps are secured at high speeds.
- Constructed of 420-denier nylon for durability.
- 20.5" H (rolled) x 10.5" W x 6.75" D (52 cm x 27 cm x 17 cm).
- 26-liter (1600 cu in) capacity.

469562 · One size
Black (90)

670 zł



Sea-Doo Dry Pouch

- One-liter volume splash-proof protection for your small essentials.
 - Made of lightweight material with waterproof coating.
 - See-through TPU window and dry bag style roll-up top with clips.
 - Belt hook for easy carrying.
 - Phone not included.
- Note: Not intended for immersion service.

469540 · One size
Black (90), Yellow (10)

112 zł

Some products may not be available or homologated in your region. Contact your dealer for more information.



Cool gear on and off the water

Bags



Sportswear



Riding Gear / 48

New

Sea-Doo Mesh Cap

- Lightweight cap with mesh at back.
- Adjustable with plastic strap at back.
- Sea-Doo logo at front.

100% Polyester
454211 · One size
Navy (89), Black (90)

105 zł



Sea-Doo Classic Cap

- Adjustable with plastic strap at back.

100% Cotton
286693 · One size
Grey (09), Black (90)

109 zł



New

Wide Brim Hat

- Keeps hot sun out while cool breeze flows in from side air vents.
- Snap-up sides add stability in windy conditions and broaden visibility.
- Wind cord and size cinch system secures hat firmly on your head.
- Dark underbrim blocks glare reflected from water surface.

100% Cotton
454294 · One size
Grey (09)

157 zł



New

Sea-Doo Rag

- Fast-drying neck protection while on the water.
- Lightweight, moisture-wicking, breathable fabric.
- SPF 50 UV protection.
- Instantly doubles as a headband or facemask.

100% Polyester
454295 · One size
White (01)

53 zł



Sportswear

Riding Gear / 49

New

Diamond Tee

100% Cotton

454212
S, M, L, XL, 2XL, 3XL
White (01), Blue (80),
Black (90)

131 zł



New

Logo Tee

100% Cotton

454213
S, M, L, XL, 2XL, 3XL
White (01), Blue (80),
Black (90)

131 zł



New

Sea-Doo Classic Polo

100% Cotton Pique

286691
S, M, L, XL, 2XL, 3XL
White (01), Green (70),
Navy (89)

236 zł



New

Ladies' Sea-Doo Signature Tee

95% Cotton, 5% Spandex

454210
2XS, XS, S, M, L, XL, 2XL
White (01), Grey (09),
Navy (89)

131 zł



Some products may not be available or homologated in your region. Contact your dealer for more information.

Sportswear



Element Riding Jacket

- Light soft shell ergo design offers great comfort.
- Soft micro poly-brushed interior for additional comfort.
- 100% Polyester



Men's Element Riding Jacket

440799
S, M, L, XL, 2XL, 3XL
Black (90)

731 zł

Ladies' Element Riding Jacket

440798
XS, S, M, L, XL, 2XL
Black (90)

731 zł



New

Sea-Doo Hoodie

60% Cotton,
40% Polyester Fleece

454215
S, M, L, XL, 2XL, 3XL
Heather Grey (27)

406 zł



Size up for the perfect ride

How to measure

For best results, have someone else take measurements. Measure body in swimsuit or undergarments. Tape must be snug but not tight. If measurements fall between two sizes, order the larger size.

Chest • Measure under your arms, around the fullest part of your chest.

Waist • Measure around your waist at the narrowest place.

Hips • Stand with legs together, measure around the fullest part

Arm Length • Let your arms hang down on the side in a slightly bent position. Measure from the center of the back of your neck, along the length of your arm, to the wrist.

Inseam • Without shoes, from crotch to the floor.

PFDs

Men's Freedom and Airflow

Sizes	S	M	L	XL	2XL	3XL
US - Chest (in)	33-37	37-41	41-45	45-49	49-53	53-57
EU - Chest (cm)	84-94	94-104	104-114	114-124	124-135	135-144

Ladies' Freedom and Airflow

Sizes	S	M	L	XL	2XL	3XL
US - Chest (in)	30-33	33-37	37-41	41-45	45-49	49-53
EU - Chest (cm)	76-84	84-94	94-104	104-114	114-124	124-135

Force Pullover

Sizes	XS/S	S	M	L	XL	2XL	2XL/3XL
US - Chest (in)	34-36	-	37-39	39-41	41-43	-	111-119
EU - Chest (cm)	-	81-91	94-99	99-104	104-109	111-119	-

Men's Motion

Sizes	S	M	L	XL	2XL	3XL	4XL
US - Chest (in)	-	37-41	41-45	45-49	49-53	53-57	57-61
EU - Chest (cm)	84-94	94-104	104-114	114-124	124-135	135-145	145-155

Ladies' Motion

Sizes	XS	S	M	L	XL	2XL	3XL	4XL
US - Chest (in)	28-32	32-36	36-40	40-44	45-49	49-53	53-57	57-61
EU - Chest (cm)	76-84	84-94	94-104	104-114	114-124	124-135	135-145	-

Navigator

Sizes	XS	S/M	L/XL	2XL/3XL	4XL/6XL
US - Chest (in)	28-32	32-40	40-52	50-60	61-66
EU - Chest (cm)	71-81	81-102	102-122	127-152	-

Jr. Motion

Sizes	L			
Weight	US 50-90 lb - EU 30-40 kg			

Kids' Sandsea

Sizes	S	M	L
US - Weight	0-30 lb	30-50 lb	50-90 lb
EU - Weight	10-15 kg	15-20 kg	30-40 kg

Wetsuits, Athletic Fit Rashguards and Neoprene Shorts

Men's

Sizes	XS	S	M	L	XL	2XL	3XL
Chest (cm)	86-97	91-102	97-107	102-112	107-117	112-122	117-127
Waist (cm)	71-81	76-86	81-91	86-97	91-102	97-107	102-112
Hips (cm)	86-97	91-102	97-107	102-112	107-117	112-122	117-127

Ladies'

Sizes	XS	S	M	L	XL	2XL
Chest (cm)	81-89	86-94	91-99	97-104	102-109	107-114
Waist (cm)	61-66	66-71	71-76	76-81	81-86	86-91
Hips (cm)	86-91	91-97	97-102	102-107	107-112	112-117

Riding Suit, Relaxed Fit Rashguards and Sportswear

Men's

Sizes	XS	S	M	L	XL	2XL	3XL
Chest (cm)	86-91	91-97	97-104	104-114	114-124	124-135	135-145
Waist (cm)	71-76	76-81	81-89	89-99	99-109	109-122	122-132
Low Hips (Seat) (cm)	86-91	91-97	97-104	104-114	114-124	124-135	135-145
Arm Length (cm)	76-79	79-81	81-84	84-86	86-89	89	89-91
Inseam (cm)	79-80	80-81	81	81	81	81	81

Ladies'

Sizes	2XS	XS	S	M	L	XL	2XL
Chest (cm)	76-81	81-86	86-91	91-99	99-107	107-117	117-127
Waist (cm)	61-66	66-71	71-76	76-84	84-91	91-102	102-112
Low Hips (Seat) (cm)	84-89	89-94	94-99	99-107	107-114	114-124	124-135
Arm Length (cm)	76	76	76-77	77-78	78-80	80-81	81-83
Inseam (cm)	76	76	76	76	76	76	76

Gloves

Sizes	XS	S	M	L	XL	2XL	3XL
Palm (cm)	7.6	8.3	9	10	11.4	13	14

Footwear

Sizes (CA)	7	8	9	10	11	12	13
Sizes (EU)*	39½	41	42	43	44½	46	47

Sea-Doo Neoprene Boots

Sizes (CA)	5	6	7	8	9	10	11	12	13
Sizes (EU)*	36	37-38	39	40-41	42	43-44	45	46-47	48

*Use CA codes to complete the part number on your order.

What code represents your size?

- 1 Find your size.
- 2 The corresponding code is THE CODE you use to complete the part number on your order.
Example: 440227_90
Size: M = Code "06", therefore 4402270690

Size	Code	Size	Code	Size	Code
ONE SIZE	00	3XL	16	7	27
2XS	01	4XL	18	8	28
XS	02	XS/S	90	9	29
S	04	S/M	72	10	30
M	06	L/XL	73	11	31
L	09	2XL/3XL	74	12	32
XL	12	5	24	13	33
2XL	14	6	25		

Some products may not be available or homologated in your region. Contact your dealer for more information.

Sea-Doo Parts

Genuine parts that set the standard

With Sea-Doo parts, you get the peace-of-mind of a **full one year warranty**. That's whether they're installed by you or your authorized BRP dealer. And if they're installed by your dealer, labor is covered too.



*Installed by dealer

Maintenance

Maintenance

Choose from products designed to make regular maintenance easy and keep your watercraft at its best.

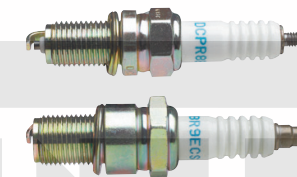
Did you know...

- ✓ We recommend doing an oil change every year at pre-season or after every 100 hours of use, whichever comes first. This will help increase the longevity of your vehicle.
- ✓ Plus, our ultra-convenient oil change kits already include the right parts and the right amount of oil based on your vehicle's maintenance needs. Taking care of your Sea-Doo has never been easier.
- ✓ Over time, engine oil breaks down and wears out, making it less effective at lubricating critical engine components and absorbing friction heat.
- ✓ Changing your oil as recommended is a practice you'll value for a long time.

NGK[†] Spark Plugs

- BRP dealers carry the full line of premium NGK Spark Plugs for Sea-Doo watercraft.

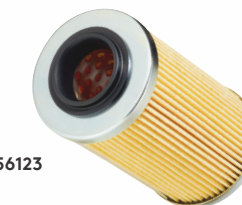
DCP-R8E	FR9C-G	CR8EB
707000246	296000421	415129403



Oil Filter

- Ask your certified BRP dealer to match the right parts to your watercraft.

420956741 420956744 420956123



4T 5W-40 Synthetic Blend Oil Change Kit

- Ultra-convenient "all-in-one" oil change kit saves time and money.
- Includes XPS Synthetic or Synthetic Blend Oil, oil filter, o-rings and washer.

779250 • Rotax 900 ACE engine
779251 • Rotax 1500 cc or more engine



295100244

Oil Vacuum Tools

Drill Pump

- Safely and easily removes engine oil.
- Activate with a power drill.

295100244



529035880

Handpump with container

529035880

Note: Please contact your nearest dealer for suggested retail prices of oil based products.

Post-Riding

The last step before putting the cover on, post-ride maintenance will extend the life of your watercraft over the long run.

Replacement Parts

Our extensive range of authorized replacement parts is just an order away.



Salt-Away†

- Mixed with water, it washes away the salt and leaves a protective coating on the surface to prevent rust and corrosion.
- Can also be used for trailer wash and maintenance.

Refill
295100219 · 1 US gallon
(3.785 L)

Concentrate with dispenser
295100218 · 1 quart
(946 ml)



Salt-Away Dispenser Unit

295100221



Flush Kit

- A must to help keep your engine corrosion-free and to maximize performance.
- Kit includes all necessary components for a hassle-free flush.

SPARK (Standard on 2015 and up models)
295100555

For watercraft that do not yet have a "T" fitting and don't have the threaded water outlet on the ride shoe
295500068

Flush Adapter

- For most watercraft models with a threaded water outlet fitting on the ride shoe.

295500473



Coupler Hose

- For most watercraft models that already have a "T" fitting.
- Also for watercraft models that use the flush adapter on the ride shoe water outlet.

295500258



YUASA† BATTERIES

- Top-of-the-line models from the preferred original equipment battery supplier in North America.

18 amps, Wet (YTX20L)
Factory activated (Non-spillable)
410301203

30 amps, Dry (YB30CL-B)
278001882

30 amps, Wet (Y1X30L)
Factory activated (Non-spillable)
515176151



Lift Kit

- Accurately lifts and positions your watercraft with a lift kit of nylon webbing and vinyl-coated steel lift plates.
- Lifting capacity of 1,200 lb (544 kg).
- Allows lifting from both straight and angled positions.

295100758



Ask your certified BRP dealer for details.

Some products may not be available or homologated in your region. Contact your dealer for more information.

Sacrificial Anodes

- Sacrificial anodes are specifically designed to protect parts of your personal watercraft that are underwater from galvanic corrosion.
- Like the name implies, they essentially "sacrifice" themselves by absorbing the electrochemical process of corrosion to prevent metal components like the impeller, jet pump nozzle or engine from being "eaten away" instead.
- Galvanic corrosion can cause major damage if not controlled.
- Inspect your sacrificial anode at least once a month.
- Replace it when it is 50% depleted.

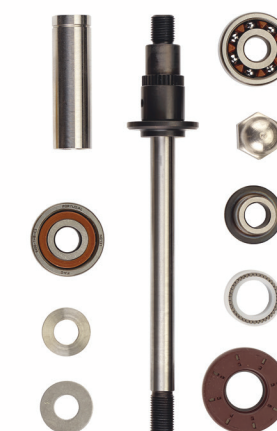
Outside diameter: 26 mm
Height: 6 mm
271001920



Outside diameter: 26 mm
Height: 13 mm
271001813



1/4-18 NPT Anode for intercooler on models 260 and 300 hp (2016 and up)
271001942



Supercharger Repair Kit

- Complete kit to rebuild your supercharger.
 - Made of quality Sea-Doo genuine parts and metal washers to increase reliability.
- Fits all 215, 255 and 260 hp models**
420881102

See your certified BRP dealer to match the right parts to your watercraft.

Replacement Parts

Impellers

- High performance impellers designed specifically to enhance engine performances and calibration.
- Offer perfect fit with wear ring and driveshaft components.



Model	Year	Sku	Price
SPARK	2014-2020	267000948	
GTI 90/ GTI SE 90	2017-2019	267000919	
GTI 90	2020	267001046	
GTI SE 90	2017-2018	267000919	
GTI 130	2009-2019	267000940	
GTI 130	2020	267001044	
GTI SE 130	2009-2020	267001044	
GTI SE 155	2009-2019	267000940	
GTI SE 170	2020	267001044	
GTI 155	2009-2019	267000940	
GTI PRO	2020	267001033	
GTR 215	2014-2016	267000801	
GTR 230 / GTR-X 230	2017-2019	267000957	
GTS 90	2017-2018	267000919	
GTS 130	2011-2016	267000940	
GTX 155	2011-2017	267000943	
	2018-2019	267001019	
GTX 170	2020	267001044	
GTX S 155	2012-2017	267000943	
GTX 215	2011-2016	267000756	
GTX 230	2018	267001021	
	2019	267001038	
	2020	267001045	
GTX Ltd 215	2014-2016	267000756	
GTX Ltd 230	2017	267000954	
	2018	267001021	
	2019	267001038	
	2020	267001045	
GTX Ltd 300	2016-2020	267000951	
GTX Ltd iS / S / 260	2012-2016	267000945	
FISH PRO	2019-2020	267001044	
RXP-X 255	2009-2011	267000970	
RXP-X 260	2012-2015	267000984	
RXP-X 300	2016-2020	267000951	
RXT 230	2018	267001021	
	2019	267001038	
RXT-X	2010	267000974	
RXT iS 255 / 260	2009-2010	267000974	
RXT 260 / aS / 260 / iS 260	2011-2017	267000945	
RXT-X 300	2016-2020	267000951	
WAKE 155	2011-2017	267000940	
	2018-2019	267001019	
WAKE 170	2020	267001044	
WAKE PRO 215	2011-2016	267000756	
WAKE PRO 230	2017	267000954	
	2018	267001021	
	2019	267001038	
	2020	267001045	

See your certified BRP dealer to match the right parts to your watercraft.
Some products may not be available or homologated in your region. Contact your dealer for more information.

Wear Rings

- Simple, cost effective way to keep the pump system operating like new.
- Restore tight clearance to your impeller.
- Reduce cavitation and recover lost performance caused by a worn ring.



Model	Year	Sku	Price
SPARK	2014-2020	267000925	
GTI 90	2017-2020	267000897	
GTI SE 90	2017-2018	267000897	
GTI 130	2009-2020	267000419	
GTI SE 130	2009-2020	267000419	
GTI SE 155	2009-2019	267000419	
GTR 215	2012-2016	267000372	
GTR 230 (all models)	2017-2020	267000917	
GTS 90	2017-2019	267000897	
GTS 130	2011-2016	267000419	
GTS PRO 130 (Europe)	2011	267000419	
GTS RENTAL 130	2014-2015	267000419	
GTX 155	2009-2019	267000419	
GTX S 155	2009-2017	267000419	
GTX 170	2020	267000419	
GTX 215 / 255 / 260	2009-2017	267000372	
GTX 230	2018	267000372	
	2019-2020	267000917	
GTX Ltd 230	2016 -2020	267000917	
GTX Ltd 300	2016-2020	267000917	
FISH PRO	2019-2020	267000419	
RXP-X (all models, except 300 hp)	2009-2015	267000917	
RXP-X 300	2016-2020	267000917	
RXT (all models)	2009-2018	267000372	
RXT 230	2019	267000917	
RXT-X 300	2016-2020	267000917	
WAKE 155	2009-2019	267000419	
WAKE 170	2020	267000419	
WAKE PRO 215	2011-2016	267000372	
WAKE PRO 230	2009-2018	267000372	

See your certified BRP dealer to match the right parts to your watercraft.

New

Heavy Duty Wear Ring

- Simple, cost effective way to keep the pump system operating like new.
- Restore tight clearance to your impeller.
- Reduce cavitation and recover lost performance caused by a worn ring.



GTI, GTS, WAKE, GTX (130 and 155)
267001036



Why XPS oil is the perfect fit for your Rotax engine?

Just like you count on Sea-Doo to help you make the most of every adventure, you can trust XPS to ensure the long-lasting performance and durability of your Rotax engine.

Ultimate performance

Engineered to match the advanced performance of Rotax engines.

Unmatched reliability

Get the most out of every mile on every ride.

Made for this

Developed with Rotax engines to deliver the best performance and lubrication in all conditions.



Anthony Radetic
P1 AquaX Sportsman of the year

XPS oil has undergone rigorous testing in the harshest marine scenarios to prove itself, and this year will be used by many Sea-Doo racers including P1 AquaX Sportsman of the Year and Wounded Warrior **Anthony Radetic**, and Multi-National and World Champion **Erminio Iantosca**.

Visit the sea-doo.com Parts & Maintenance section to see the full line of XPS lubricants.

Engine Oils

Get true XPS peace of mind



Functional Fluids



Extended Life Pre-Mixed Coolant

- Antifreeze/Coolant contains the correct dilution and the necessary additives to prevent corrosion and inhibit cavitation in BRP cooling systems.
- Long-life, 5-year formula specially formulated for BRP vehicles.
- Superior heat transfer.
- Ideal replacement for vehicles that normally use a 2-year antifreeze/coolant (green).
- 5 years (orange).

779150 · 1 quart (0.946 L)
619590204 (Scandinavia)



Universal Pre-Mixed Coolant

- Antifreeze/Coolant contains the correct dilution and the necessary additives to prevent corrosion and inhibit cavitation in powersport cooling systems.
- For vehicles that normally use a 2-year antifreeze/coolant (green).

779149 · 1 quart (0.946 L)

Lubricants



Synthetic Grease

- Recommended for marine applications.
- This synthetic grease provides the best wear protection and water resistance available.

293550010 · 14 oz. (400 g)



Synthetic Jet Pump Oil

- Synthetic Jet Pump Oil uses a unique combination of synthetic base stocks and additives that allow higher loads, superior shear stability and reduced oxidation compared to other synthetics and conventional API GL-5 oils.
- Recommended for use in Sea-Doo jet pump requiring oil.

779221 · 6 fl. oz. (178 ml)



Triple-Guard[†] Marine Grease

- This tough grease stays in place and is unaffected by vibration, salt water or cold temperatures.
- Reformulated for high water resistance and improved adhesion to metal.
- Won't swell seals, packing or o-rings.
- Totally waterproof to prevent water wash-off.

296000329 · 8 oz. (227 g)

Maintenance Products



Anti-Corrosive Lubricant

- Multipurpose lubricant that can also be used to prevent rust, corrosion and moisture intrusion.
- It contains extreme pressure additives that work as an all-around lubricant for just about anywhere lubrication is needed.

619590093 (Scandinavia) · 14 oz. (400 g)
779168 (US)
293600016 (EU)



Anti-Corrosion Spray

- Heavy, waxy coating specifically designed to protect your engine from rust and corrosion.
- Highly effective against corrosion caused by salt water and salt spray.

219700304
11 oz. (312 g)



Storage Oil

- High-performance fogging oil designed to protect internal engine parts from rust and corrosion.
- It coats engine internals throughout out the whole storage period and is burned away through combustion when engine is started.
- Protects engines during non-use or storage.
- Burns complete upon start up.

779173 · 12 oz. (350 g)
619590094 (Scandinavia)



Fuel Stabilizer

- Ethanol-compatible and will stabilize fuel in your tank to keep it from breaking down and causing hard starting, throttle hesitation and poor run quality.
- Ethanol attracts moisture, and this product contains powerful anti-corrosion additives to protect fuel system components.
- Prevents problems associated with E10 fuels.

779183 (EU) · 8 fl. oz. (236 ml)
779171 (US)

Fuel Treatment Carbon Free

- Combination of a fuel treatment and a fuel system cleaner that can be used periodically to restore lost starting or throttle performance, as well as maintain fuel system integrity and keep internal engine parts clean.
- It treats fuel for storage and addresses the moisture problems inherent in today's Ethanol-blended fuels, keeping ferrous and soft metal parts clean and free of corrosion.
- Uses patented, state-of-the-art additives.
- Cleans valves, sticky rings and combustion chamber.

779169 · 12 fl. oz. (355 ml)

Fuel Treatment Carburetor Cleaner

- Complete fuel treatment specially formulated to prevent small engine problems caused by Ethanol-blended fuels.
- It removes fuel system gum and varnish that may have accumulated during storage, stabilizes fuel against breakdown for 12 months or more, and adds corrosion protection from moisture for short- and long-term storage.
- It also helps restore throttle response and easy starting.
- It can be used periodically to maintain fuel system integrity, keep carburetor jets clean, and also combat moisture problems caused by Ethanol-blended fuels to keep ferrous and soft metal parts clean and free of corrosion.

779184 (EU) · 12 fl. oz. (355 ml)
779172 (US)



XPS 4T 5W-40 Synthetic Blend Oil

- Designed for high-performance off-road, on-road and PWC 4-stroke engines, including turbo or supercharged powersports engines.
- Off-road formula with premium anti-wear and anti-corrosion additives.
- Provides superior engine and transmission protection against rust and corrosion even in extreme conditions.

779133 (US) / 779290 (EU) · 1 quart (0.946 L)
779134 (US) / 779291 (EU) · 1 US gal. (3.785 L)



XPS 2T E-TEC Synthetic Oil

- Specifically engineered to meet the unique needs of Rotax engines, it provides maximum protection against engine wear in E-TEC engines.
- Uses a highly effective package to keep engine parts lubricated, clean and free of wear.
- This low smoke, low odor formula also allows for maximum engine performance.
- Can be used in direct, semi-direct fuel injection system and high performance carbureted 2-stroke engines.

779126 (US) / 779281 (EU) · 1 quart (0.946 L)
779127 (US) / 779282 (EU) · 1 US gal. (3.785 L)



XPS 2T Racing Synthetic Oil

- Designed for all fuel injection, carbureted, oil injection or premix 2-stroke personal watercraft.
- Provides low smoke, easy cold starting.
- Ensures maximum protection against corrosion and wear by keeping engine parts lubricated and clean.

779180 · 1 quart (0.946 L)
779181 (US) / 779229 (EU) · 1 US gal. (3.785 L)



4T 5W-40 Synthetic Blend Oil Change Kit

- Ultra-convenient "all-in-one" oil change kit saves time and money.
- Includes XPS Synthetic Blend Oil, oil filter, o-rings and washer.

Rotax 900 ACE engine
779250

Rotax 1500 cc.
or more engine
779251

Note: Please contact your nearest dealer for suggested retail prices of oil based products.

Note: Please contact your nearest dealer for suggested retail prices of oil based products. Some products may not be available or homologated in your region. Contact your dealer for more information.

Sweet days on the water

*A fun, unique way to ride
the waves together.*



EXPLORE AN ENTIRE WORLD OF ADVENTURE WITH ALL OF OUR BRP PRODUCTS. **BRP.COM**



323205140

©2019 Bombardier Recreational Products Inc. (BRP). All rights reserved.
® and the BRP logo are trademarks of BRP or its affiliates. Printed in Canada.

ski-doo LYNX SEA-DOO can-am ROTAX ALUMAcraft Manitou EVINRUDE