

# MAVERICK X3 & MAVERICK X3 MAX ACCESSORIES

BE READY TO OFFER YOUR CUSTOMERS  
THE FULL MAVERICK X3 AND MAVERICK X3 MAX  
RIDING EXPERIENCE.

THIS INCREDIBLE LINEUP WILL TURN THE RIDE  
FROM ORDINARY TO EXTRAORDINARY!



**can-am**





# NEW MAVERICK X3 MAX ACCESSORIES



ACCESSORIZE THE MAVERICK X3 MAX IN YOUR SHOWROOM AND INCREASE YOUR PROFITS!

## MAVERICK X3 MAX PERFORMANCE

**Lonestar Racing Front Bumper**  
715003914

**Lonestar Racing Rock Sliders**  
715004342

**Lonestar Racing Aluminum Roof**  
715004340

**Lonestar Racing Front Intrusion Bar**  
715003916

**Lower Door Panels (rear)**  
715003751

**Beard Seats**  
715004194

**4-Point Harness (passenger)**  
715003767

**4-Point Harness (driver)**  
715003766

**40" (102 cm) Baja Designs OnX6 Arc LED Light Bar**  
710004630

**Lonestar Racing 40" (102 cm) LED Light Bar Rack**  
715003920

**Lonestar Racing Fire Extinguisher Support**  
715003734

**Fire Extinguisher**  
295100004

**Lonestar Racing Number Plate Holder**  
715003943

**Lonestar Racing Rear Bumper**  
715003915

**Lonestar Racing Rear Intrusion Bar**  
715003918

**Lonestar Racing Spare Tire Holder**  
715003922

**Yoshimura Slip-On Exhaust**  
715002882



## MAVERICK X3 MAX X RS ADVENTURE

**Front Pre-Runner Bumper**  
715003433

**Rock Sliders**  
715003888

**Glass Windshield Wiper and Washer Kit**  
715003283

**Lower Door Panels (front)**  
715002903

**Lower Door Panels (rear)**  
715003751

**Adventure Roof Rack**  
715003868

**LinQ Adaptor**  
715003058

**LinQ Tool Holder**  
715003059

**Baja Designs XL Sport LED Lights**  
710005287

**10" (25 cm) Baja Designs OnX6 LED Light Bar**  
710004881

**Complete MTX Audio system**  
715002873

**Racing Side Mirrors**  
715002898

**Super Extended Fender Flares**  
715002973

**Rear Pre-Runner Bumper**  
715003436

**Baja Designs Squadron Sport LED Lights**  
710004648

**Chase Lights**  
715002887

**LinQ Pivoting Rack**  
715003439

**LinQ 8 GAL (30L) Cooler Box**  
715002892





### ROCK SLIDERS

- Made of heavy-duty 1.5" (3.8 cm) diameter steel tubing.
- Inside and outside anti-corrosion coating with durable powder coat finish.
- Protect vehicle's sides and undercarriage against large obstacles.
- Support plate adds rigidity and style.
- Sold in pairs.

**Fits: SSP (MAX models only)**

■ 715003730 · Black

■ 715003888 · Can-Am Red



### SPORT ROOF

- Impact-resistant injected polypropylene.
- Excellent protection from the elements.
- Provides excellent downhill visibility.
- Easy, tool-less installation.
- Windshield compatible.
- Standard on X rs models.

**Fits: SSP (MAX models only)**

■ 715003750 · Black



### LOWER DOOR PANELS (REAR)

- Robust injection-molded polypropylene construction designed to match vehicle.
- Extends stock doors at bottom to protect cab area.
- A great-looking add-on.
- Easy and quick installation.
- Sold in pairs.

**Fits: SSP (MAX models only)**

■ 715003751 · Black



### BIMINI ROOF WITH SUN VISOR

- Soft top with hard visor.
- UV-resistant, water-repellent 600-denier solution-dyed polyester with Can-Am branding.
- Allows user to stow the soft top on the hard visor.
- Easy, tool-less installation and removal with quick release 1/4 turn fasteners and Velcro straps.

**Fits: SSP (MAX models only)**

■ 715003749 · Black





### ADVENTURE ROOF RACK

- Ideal cargo solution for packing everything you need to live your off-road experience fully and completely.
- Built with heavy-duty 1.25" (3.8 cm) diameter steel tubing.
- Loads of up to 75 lb.
- Integrated mounting points for lights can hold up to 8 pod-type LED lights (6 front and 2 back) or a 40" LED bar (front).
- Features anchor points for spare tire attachment.
- Spare Tire Tie-Downs sold separately.
- Add the Cargo Box Net or the Cargo Box Elastic Net to secure and confine your cargo in the rack.

**Fits: SSP (MAX models only)**

■ 715003868 · Black



### HMWPE SKID PLATES

Our Plastic Plates glide smoothly and silently over obstacles, offering great protection in rough terrain. Made of abrasion-resistant thermoformed High Molecular Weight Polyethylene (HMWPE) lighter than aluminum. Cold cracking resistant. High impact energy absorption.

### HMWPE SKID PLATE PROTECTION KIT

Includes:

- HMWPE Front A-Arm and Trailing Arm Protectors,
- HMWPE Front Skid Plates, HMWPE Underbelly Plates and HMWPE Central Skid Plate.

**Fits: SSP (MAX models only except X rs)**

715003747

### INDIVIDUAL HMWPE SKID PLATES

#### CENTRAL SKID PLATE

- Ultra-sturdy 3/8" (9.5 mm) thickness.
- Provides mid and rear protection.
- Standard on Maverick X3 MAX X rs.

**Fits: SSP (MAX models only)**

715003731



### RUGGED RADIOS HELMET HEADSET KIT FOR REAR PASSENGERS

- Specifically designed to facilitate clear in-vehicle communication between driver and passenger(s).
- Expandable to 4 people.
- Includes music port for enjoying your favorite tunes.
- Seamless integration with in-dash switch panel.
- May be synched with the Car-To-Car Radio System (715003440).
- Additional 12ft cables and Helmet Speaker/Mic Kits to upgrade your 2 person intercom system into a 4 person system.

**Fits: All SSV MAX models**

■ 715004380 · Black



Image shows a 2-up trailing cover

### TRAILERING COVER

- Can-Am branded 300-denier solution-dyed, water-repellent polyester construction.
- Allows access to fuel and passenger compartments.
- Heavy-duty strap around bottom for secure fit.

- Lined with soft fabric in the windshield area to prevent scratching.
- Fits with or without accessories.
- Airflow design reduces aerodynamic drag and improves fuel economy.

**Fits: SSP (MAX models only)**

■ 715003843 · Black

## NEW LONESTAR RACING ACCESSORIES FOR MAVERICK X3 MAX



### LONESTAR RACING ROCK SLIDERS

- Made of 1.5" (3.8 cm) diameter steel tubing with durable powder coat finish filled with 1/8" (3 mm) aluminum plate.
- Protects vehicle sides from large obstacles.
- Sleek styling enhances the vehicle's race-inspired look.
- "Lonestar Racing for Can-Am" branded.
- Sold in pairs.

**Fits: SSP (MAX models only)**

■ 715004342 · Black

■ 715004343 · Can-Am Red



### LONESTAR RACING ALUMINUM ROOF

- 0.083" (2.1 mm) thick aluminum roof.
- Durable and lightweight.
- Enhances the vehicle's racing appearance thanks to an authentic sporty look combined with unique graphics.
- Offers you protection from the elements with a personalized touch.
- Includes middle intrusion bars for installation.
- Lower profile than other roofs.
- Compatible with Lonestar Racing Light Bar Racks.
- Not compatible with Light Support Bar and with Full Windshields.
- "Lonestar Racing for Can-Am" branded.»

**Fits: SSP (MAX models only)**

■ 715004340 · Black

■ 715004341 · Can-Am Red



# MAVERICK X3 ACCESSORIES



ACCESSORIZE THE MAVERICK X3 IN YOUR SHOWROOM AND INCREASE YOUR PROFITS!

## DUNE ACCESSORIES

Dune Front Bumper  
715002961

Dune Rear Bumper  
715002962

Front Intrusion Bar  
715002889

Rear Cage Extension  
715002890

Lower Door Panel (front)  
715002903

40" (102 cm) Baja Designs  
OnX6 Arc LED Light Bar  
710004630

Light Support Bar  
715003529

Lighted Whip Flag  
715002886

Aluminum Roof  
715002900

Baja Designs Squadron  
Sport LED Light  
710004648

Racing Side Mirrors  
715002898

Electronic  
Device Holder  
715002874



## DESERT ACCESSORIES

Front Pre-Runner Bumper  
715003433

Rear Pre-Runner Bumper  
715003436

Rock Slider  
715003438

Light Support Bar  
715003529

Baja Designs XL80 LED  
Light  
710005041

Baja Designs XL  
Sport LED Light  
710005287

Lighted Whip Flag  
715002886

LinQ Pivoting Rack  
715003439

LinQ 8 GAL (30 L)  
Cooler Box  
715002892

Half Windshield  
715002909

Rear Wind screen  
715002897

Super Extended  
Fender Flares  
715002973



## PERFORMANCE ACCESSORIES

Lonestar Racing  
Front Bumper  
715004161

Lonestar Racing  
Front Intrusion Bar  
715004163

Lonestar Racing  
Rear Bumper  
715004162

Lonestar Racing  
Rear Intrusion Bar  
715004164

Lonestar Racing  
Rock Sliders  
715004165

Lonestar Racing  
Spare Tire Holder  
715004166

Lonestar Racing  
Fire Extinguisher Support  
715003734

Lonestar Racing  
Number Plate Holder  
715003943

Lonestar Racing 40"  
(102 cm) LED Light  
Bar Rack  
715003920

40" (102 cm) Baja  
Design OnX6 Arc  
LED Light Bar  
710004630

Lonestar Racing  
Aluminum Roof  
715004160





### FRONT INTRUSION BAR

- Matches vehicle styling.
- Inside and outside anti-corrosion coating with durable powder coat finish steel intrusion bar.
- Not compatible with windshields and Lonestar Racing Aluminum Roof.
- Tube design reduces obstructed lines of sight and blind spots for better visibility.

**Fits: SSP**

■ 715002889 · Black

■ 715003435 · Can-Am Red



### FRONT PRE-RUNNER BUMPER

- Made of 1.5" (3.8 cm) diameter steel tube with a 1/8" (3 mm) aluminum plate for extra durability.
- Inside and outside anti-corrosion coating with durable powder coat finish.
- Added heavy-duty protection in extreme conditions.
- Includes integrated winch mounting plate and mount points for lights.

**Fits: SSP**

■ 715002878 · Black

■ 715003433 · Can-Am Red



### DUNE FRONT BUMPER

- Made of 1.5" (3.8 cm) diameter aluminum tubing with a 1/8" (3 mm) aluminum plate.
- Inside and outside anti-corrosion coating with durable powder coat finish.
- Provides added protection without sacrificing the agility and performance advantages of a lighter weight design.
- Features a more pronounced attack angle and integrated mounting points for lights.
- Not winch compatible.

**Fits: SSP**

■ 715002961 · Black

■ 715003432 · Can-Am Red



### SUPER EXTENDED FENDER FLARES

- Extended fender flares made from injection-molded polypropylene.
- Keep mud and debris out of vehicle.
- Designed for quick and easy installation.
- Include front and rear extensions and mounting hardware.

**Fits: SSP**

715002973





### REAR PRE-RUNNER BUMPER

- Extra-durable 1.5" (3.8 cm) diameter steel tube with a 1/8" (3 mm) aluminum plate.
- Inside and outside anti-corrosion coating with durable powder coat finish.
- Protects vehicle bodywork and exhaust system.
- Rear receiver hitch compatible.
- Required for installation of the Rear Cage Extension.

**Fits: SSP**

■ 715002880 - Black

■ 715003436 - Can-Am Red



### DUNE REAR BUMPER

- Made of 1.5" (3.8 cm) diameter aluminum tubing with a 1/8" (3 mm) aluminum plate.
- Inside and outside anti-corrosion coating with durable powder coat finish.
- Provides added protection without sacrificing the agility and performance advantages of a lighter weight design.
- Protects vehicle bodywork and exhaust system.
- Rear receiver hitch compatible.
- Not compatible with Rear Cage Extension.

**Fits: SSP**

■ 715002962 - Black

■ 715003437 - Can-Am Red



### ROCK SLIDERS

- Made of heavy-duty 1.5" (3.8 cm) diameter steel tubing.
- Inside and outside anti-corrosion coating with durable powder coat finish.
- Protect vehicle's sides and undercarriage against large obstacles.
- Support plate adds rigidity and style.
- Sold in pairs.

**Fits: SSP (except MAX models)**

■ 715002963 - Black

■ 715003438 - Can-Am Red



### REAR CAGE EXTENSION

- Durable 1.5" (3.8 cm) diameter steel tubing.
- Inside and outside anti-corrosion coating with durable powder coat finish.
- Allows holding a spare tire in place (wheel not included).
- Custom tie-down strap for fast tire installation or removal.
- Rear Pre-Runner Bumper required for installation.
- Not compatible with LinQ Pivoting Rack and cargo boxes (except LinQ 20 Gal (73L) Deluxe Modular Bag).

**Fits: SSP**

■ 715002890 - Black

■ 715003434 - Can-Am Red

### LinQ PIVOTING RACK

- LinQ latched rack allows for extra LinQ mounted accessories or for carrying a spare tire (tire not included).
- Includes custom tie-down strap for fast spare tire installation or removal.
- Gas-cylinder pivot action, locks in the raised position.
- Trunk Boxes over 20 Gal (74L) do not fit on the vehicle when the rack is installed.
- Not compatible with Rear Intrusion Bars and Rear Cage Extension.

**Fits: SSP**

■ 715002881 - Black

■ 715003439 - Can-Am Red



### TUBE LinQ ADAPTOR

- Cage mounted LinQ receiver.
- Included in the LinQ Pivoting Rack assembly.
- Allows the installation of single LinQ mounted accessories.

**Fits: SSP**

■ 715004292







### LinQ 8 GAL (30 L) COOLER BOX

- Rotomolded construction provides exceptional rigidity and durability along with optimal ice retention.
- Premium-quality foam insulation.
- Integrated, fully-removable compartment protects food.
- Weather-resistant, lockable.
- Convenient drain plug.
- Fits on all vehicles using a LinQ rack.

**Fits: RS, SSP**

**715002892**



### LOWER DOOR PANELS (FRONT)

- Robust injection-molded polypropylene construction designed to match vehicle.
- Extends stock doors at bottom to protect cab area.
- A great looking add-on.
- Easy and quick installation.
- Sold in pairs.

**Fits: SSP**

**715002903**



### ELECTRONIC DEVICE HOLDER

- A great in-ride entertainment system platform.
- Robust injected-polypropylene construction allows for right fit and easy installation.
- Adjustable unit safely holds most tablets and smartphones between dimensions of 5.1" (13 cm) and 10" (25,4 cm) (with protective case).
- Combines seamlessly with Complete MTX Audio System and Intercom System.
- Allows the installation of Garmin Montana 680T GPS.
- Integrated storage (1 Gal (3.8L) capacity) with access to the dash 12V outlet for device charging.

**Fits: SSP**

**715002874**



### REAR WIND SCREEN

- Full rear mesh coverage reduces windshield backdraft.
- Roll-bar mounted.
- Can-Am logo on black mesh.

**Fits: SSP**

**715002897**



### TRAILERING COVER

- Can-Am branded 300-denier solution-dyed, water-repellent polyester construction.
- Allows access to fuel and passenger compartments.
- Heavy-duty strap around bottom for secure fit.
- Lined with soft fabric in the windshield area to prevent scratching.
- Fits with or without accessories.
- Airflow design reduces aerodynamic drag and improves fuel economy.

**Fits: SSP (except MAX models)**

**715002877**

### LIGHTED WHIP FLAG

- A must for riding the dunes.
- 5W Cree LED.
- 5 colored lenses to allow personalization.
- Glow-through whip, quickly-removable and replaceable pole.
- Increases vehicle's visibility.
- Meets most dune-area requirements.
- Die cast aluminum base, acetal hand nut.
- Includes mounting brackets and wiring.
- 4' (1.2 m) flag mounts on top of the roll cage.
- Can be installed on both sides of a vehicle.

**Fits: SSP**

**715002886**





## COMPLETE MTX AUDIO SYSTEM

- Bluetooth 5™ equipped 400(RMS)/800W Audio System by MTX.
- Designed to be Can-Am-tough in the most demanding riding conditions.
- Includes front-dashboard and rear-roll-cage mounted stereo speakers and head unit with an integrated 6.5" (16.5 cm) subwoofer.
- Add the Electronic Device Holder to securely hold your Bluetooth device ready to play your favorite tunes.

**Fits:** SSP

**715002873**



**NEW**

## CHASE LIGHTS

- Designed by Can-Am to make you visible to vehicles riding behind you, especially in dusty or harsh conditions.
- Brake light switches on when brakes are applied.
- Features on-dash switches to activate light patterns (11 different high-visibility colored patterns to choose from).
- Can be easily configured to meet most racing series standards.
- Modular to allow installation with rear roll cage mounted accessories.
- Plug-and-play installation.

**Fits:** SSP

**715002887 · Black**



## LIGHT SUPPORT BAR

- Sleekly-styled rugged aluminum construction.
- Accommodates light bars and spotlights with or without any roof and windshield combination.
- Full vehicle width to allow the installation of any large LED light bar.
- Required for light installation on vehicle's roof.
- Lights sold separately.

**Fits:** SSP

**715003529**

## LIGHT MOUNTING KIT FOR LED LIGHT BAR

- (Not illustrated)
- Required for installation of the 39" (99 cm) single and double LED Light Bars.
- Light Support Bar required for installation.

**Fits:** SSP

**715003141**

## LIGHT MOUNTING KIT

- (Not illustrated)
- Required for installation of 10" (25 cm), 15" (38 cm) and 17" (43 cm) single and double LED Lights Bars and 4" (10 cm) Round LED Lights.
- For bumper and roof mounting locations.

**Fits:** SSP

**715003417**

## LIGHT POWER CABLE

(Not illustrated)

- Required for installation of Baja Designs LED lights onto roof or bumper.

**Fits:** SSP

**715002885 · 10" (25 cm) and 40" (102 cm) Baja Designs OnX6 LED Bars.**

**715002884 · Baja Designs XL Sport LED light & Baja Designs Squadron Sport LED Light**

**715003729 · Baja Designs XL80 LED Light**

## PERFORMANCE TWIN AIR FILTER

- The best choice for the harshest conditions.
- Multiple staged oiled filtering foam for superior dust retaining capacity with high air flow.
- Washable and reusable.

**Fits:** SSP

**715002895**



## FOAM REPLACEMENT

(Not illustrated)

- Replacement foam for Twin Air Filter.

**Fits:** SSP

**707800713**

## YOSHIMURA SLIP-ON EXHAUST

- Developed in collaboration with Yoshimura.
- Made from 304-grade stainless steel with a carbon fiber tip.
- Better sounding, better looking and 19% lighter than stock muffler.
- USDF/USDA approved spark arrester.
- Fuel injection system tuning not required.
- ROHVA and EPA compliant.
- Not EC compliant.

**Fits:** SSP

**715002882**



## ENGINE PRE-FILTER PARTICLE SEPARATOR

- Advance filtration system by S&B Filters that removes 94% of dust before it reaches the stock air filter.
- Helps keep the air filter clean for numerous continuous rides in dusty conditions, by blocking the dirt liable to clog the air filter and from penetrating.
- Also a time and money saver, i.e. less cleaning and filters last longer.
- Clamps onto either the upper or lower roll bars, and accommodates installed roofs.

**Fits:** SSP

**715004297**

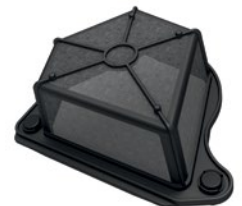


## AIR INTAKE PRE-FILTER

- Adds extra protection to your engine in harsh riding conditions.
- Helps keep air filter cleaner.
- Filter blocks particles larger than 0.007" (0.19 mm).
- Easy, tool-less installation.

**Fits:** SSP

**715004266**







### ALUMINUM ROOF

- Formed aluminum roof 0.09" (2.3 mm) thick.
- Durable and lightweight.
- Sporty look.
- Windshield compatible.
- Easy and tool-less installation.

**Fits: SSP (except MAX models)**

**715002900**



### SPORT ROOF

- Impact-resistant injected polypropylene.
- Excellent protection from the elements.
- Provides excellent downhill visibility.
- Easy, tool-less installation and removal with quick release 1/4 turn fasteners and velcro straps.
- Standard on Maverick X3 X rs.
- Windshield compatible.

**Fits: SSP (except MAX models)**

**715002902**



### BIMINI ROOF WITH SUN VISOR

- Soft top with hard visor.
- UV-resistant, water-repellent 600-denier solution-dyed polyester with Can-Am branding.
- Allows user to stow the soft top on the hard visor.
- Easy, tool-less installation and removal with quick release 1/4 turn fasteners and Velcro straps.

**Fits: SSP (except MAX models)**

**715002901**



### ALUMINUM ROOF

- Formed aluminum roof 0.09" (2.3 mm) thick.
- Durable and lightweight.
- Sporty look.
- Windshield compatible.
- Easy and tool-less installation.

**Fits: SSP (except MAX models)**

**715004224**



### HMWPE SKID PLATES

**Our Plastic Plates glide smoothly and silently over obstacles, offering great protection in rough terrain. Made of abrasion-resistant thermoformed High Molecular Weight Polyethylene (HMWPE). Lighter than aluminum. Cold cracking resistant. High impact energy absorption.**

#### HMWPE SKID PLATE PROTECTION KIT

##### INCLUDES:

- HMWPE Front A-Arm and Trailing Arm Protectors
- HMWPE Front Skid Plates
- HMWPE Underbelly Plates

**Fits: SSP (except X rs and MAX models)**

**715003713**

#### INDIVIDUAL HMWPE SKID PLATES

##### HMWPE FRONT SKID PLATE

- Thermoformed HMWPE construction.

**Fits: SSP (except MAX models)**

**715003933**

#### HMWPE FRONT A-ARM AND TRAILING ARM PROTECTORS

- Thermoformed HMWPE construction.
- Includes Front A-Arm and Trailing Arm protectors.
- Can-Am branded.

**Fits : SSP (except X rs and MAX models)**

**715002905**

#### HMWPE UNDERBELLY PLATE

- Ultra-sturdy 3/8" (9.5 mm) thickness.
- Provides mid and rear protection.
- Standard on Maverick X3 X rs.

**Fits: SSP (except X rs and MAX models)**

**715002904**

#### HMWPE FRONT SKID PLATES

- Thermoformed HMWPE construction.
- Includes Front A-Arm and Trailing Arm protectors.
- Can-Am branded.

**Fits: SSP (X rs models only)**

**715003552**

#### HMWPE SKID PLATE PROTECTION KIT

- Made of 1/4" (6 mm) thick abrasion-resistant thermoformed High Molecular Weight Polyethylene (HMWPE).
- Lighter than aluminum.
- Includes: HMWPE Front A-Arm and Trailing Arm Protectors, HMWPE Front Skid plates.

**Fits: SSP (X rs models only)**

**715003718**



### MAXXIS BIGHORN 2.0 TIRE

**Fits:** RU, RS

Front - 28" x 9" x 14"  
705401592

Rear - 28" x 11" x 14"  
705502144



### X RS FRONT AND REAR TIRE - MAXXIS BIGHORN

**Fits:** SSP

Front & Rear - 30" x 10" x 14"  
705401718



### X DS TIRE - MAXXIS BIGHORN

**Fits:** SSP

Front - 29" x 9" x 14"  
705401674

Rear - 29" x 11" x 14"  
705502225



### 14" MAVERICK X3 BEADLOCK

- Cast aluminum beadlock.
- Must be installed on Front Rim (705401706) and Rear Rim (705402286).
- Available in Black and Gold.

**Fits:** SSP (X rs, X ds models only)

■ 705401709 · Black  
■ 705401913 · Gold



### 14" MAVERICK X3 BEADLOCK RIM

- Black with clear coat aluminum rim.
- Choice of beadlock color.
- Needs 16 bolts (250000893) for installing the beadlock.

**Fits:** SSP

Front - 14" x 7"  
Offset: 55 mm  
705401706

**Fits:** SSP

(X ds models only)  
Rear - 14" x 8"  
Offset: 76 mm  
705502286



### 14" MAVERICK X3 RIM

- Black with clear coat aluminum rim.

**Fits:** SSP (base models only)

Front - 14" x 7"  
Offset: 55 mm  
705401965

Rear - 14" x 8"  
Offset: 76 mm  
705502493

### REAR RECEIVER HITCH

- E-coated finish.
- Fixed mounting point for trailer ball to provide vehicle with towing capabilities.
- This hitch offers 1,300 lb (590 kg) of towing capacity.
- Rugged lightweight steel construction.

**Fits:** SSP

■ 715002883 · Black

■ 715003938 · Can-Am Red



### WIRED REMOTE CONTROL

- This kit allows winch owners to add the hand-held remote to vehicles with a stock SuperWinch.
- Works in conjunction with the mini-rocker switch.
- Warn Remote Socket (715003651) is required.
- OEM stock winch and Wired Remote Control are sold separately.
- EC compliant.

**Fits:** All model

710004887

### WINCH ELECTRICAL HARNESS

(Not illustrated)

- Required for winch installation.

**Fits:** SSP

715003585



### FULL WINDSHIELD

- High-impact-resistant durable polycarbonate full windshield.
- Formed polycarbonate construction for enhanced rigidity.
- Formulated to be non-yellowing, non-crazing, non-cracking with excellent UV resistance and optical clarity.

- Protects driver and passenger from the elements.
- Quick and easy tool-less installation or removal.

**Fits:** SSP

715002907



## HALF WINDSHIELDS

- Front pannels.
- High-impact-resistant durable polycarbonate half windshield.
- Formed polycarbonate construction for enhanced rigidity.
- Formulated to be non-yellowing, non-crazing, non-cracking with excellent UV resistance and optical clarity.
- Protects driver and passenger from the elements.
- Features reverse angle lip to deflect air flow.
- Quick and easy tool-less installation or removal.

## HALF WINDSHIELD

**Fits: SSP**

**715002909**



## TINTED HALF WINDSHIELD

**Fits: SSP**

**715004291**



## FULL WINDSHIELD - HARDCOATED

- High-impact-resistant Quantum<sup>1</sup> hardcoated polycarbonate full windshield.
- Formed polycarbonate construction for enhanced rigidity.
- Provides excellent optical clarity and better abrasion resistance.
- Protects driver and passenger from the elements.
- Quick-attach brackets procure fast, easy and tool-less installation and removal.

**Fits: SSP**

**715002908**

## RACING SIDE MIRRORS

- Race-inspired design features rugged black nylon 6/6 construction with coated cast-aluminum mount.
- Dual-adjustment provides optimal field of view (FOV).
- Multi-position adjustable ball-joint mounted mirrors.
- Flat optics deliver improved distance perception.
- Spring-loaded pivots lets mirrors fold back completely.
- Not compatible with Lonestar Racing Light Racks.
- Sold in pairs.

**Fits: SSP**

**715002898**



**NEW**

## GLASS WINDSHIELD

- Curved- and laminated-glass full windshield.
- Seals firmly against the cage and protects rider and passenger from the elements.
- Provides the best optical clarity and abrasion resistance.
- Must be used with Windshield Wiper and Washer Kit to maintain clear visibility during severe riding conditions, such as mud riding.

**Fits: SSP**

**715003281**



**NEW**

## GLASS WINDSHIELD WIPER AND WASHER KIT

- Complete kit that includes the curved and laminated glass windshield with the single speed wiper and washer fluid dispenser.
- Seals firmly against the cage and protects rider and passenger from the elements.
- An ideal way to keep your windshield clear in rain, or while riding through mud and water.

**Fits: SSP**

**715003283**

**NEW**

## WINDSHIELD WIPER AND WASHER KIT

- An ideal way to keep your windshield clear in rain, or while riding through mud and water.
- Includes single-speed wiper and washer fluid dispenser.
- Must be used with the Glass Windshield (715001303).
- Wiper mechanism and washer fluid dispenser perfectly concealed within the vehicle.

**Fits: SSP**

**715003282**





#### 4-POINT HARNESS

- Exclusive controlled decelerator absorbs energy in case of an accident.
- Designed to offer maximum riding comfort.
- Easy one-click latch and release.
- Patent pending.
- Not EC compliant.

**Fits: SSP**

**715003766 · Driver**

**715003767 · Passenger**





#### BEARD SEATS

- True performance seating for driver and passenger.
- Designed specifically for side-by-side vehicle applications.
- Offer great posture for both driver and passenger during intense riding conditions, thanks to the ideal seat angle and wide pitch range.
- Feature a high level of containment support, which gives superior comfort and stability.
- Hard fiberglass shell covered with sculpted foam and wrapped with a custom cover of premium marine-grade vinyl, which is durable in all driving conditions and resistant to mildew and fading.
- Enhance the racing look of the vehicle.
- No additional seat mounts required.
- Requires 4-point harness (715003767, 715003766).
- Sold in pairs.

**Fits: SSP**

 **715004194 · White**

 **715004195 · Can-Am Red**

 **715004196 · Steel Gray**



#### 40" (102 CM) BAJA DESIGNS ONX6 ARC LED LIGHT BAR

- Made by Baja Designs.
- 252 watt light bar producing 25,800 lumens.
- Equipped with 24 Cree XM-L2 LEDs.
- Driving/Combo light pattern for smooth blend of light for both near field applications and distance.
- Dual intensity (high/low) settings + strobe mode.
- Designed for installation onto Light Support Bar equipped roofs.
- Requires Light Power Cable.

**Fits: SSP**

**710004630**



#### BAJA DESIGNS XL SPORT LED LIGHTS

- Made by Baja Designs.
- 20 watt per spot producing 1,800 lumens.
- Equipped with 4 Cree XP-G2 LEDs per spot.
- High Speed Spot features a longer and narrower beam focus for illumination farther down.
- Designed for installation onto Pre-Runner and Dune bumpers and/or Light Support Bar equipped roofs.
- Require · Light Power Cable.
- Sold in pairs.

**Fits: SSP**

**710005287**



#### 10" (25 CM) BAJA DESIGNS ONX6 LED LIGHT BAR

- Made by Baja Designs.
- 58.5 watt light bar producing 7,350 lumens.
- Equipped with 6 Cree XM-L2 LEDs.
- Driving/Combo light pattern for smooth blend of light for both near field applications and distance.
- Dual intensity (high/low) settings + strobe mode.
- Designed for installation onto Pre-Runner and Dune bumpers and/or Light Support Bar equipped roofs.
- Requires Light Power Cable.

**Fits: SSP**

**710004881**



#### BAJA DESIGNS XL80 LED LIGHTS

- Made by Baja Designs.
- 80 watt per spot producing 9,500 lumens.
- Equipped with 4 Cree XHP50 LEDs per spot.
- Designed for installation onto Pre-Runner and Dune bumpers and/or Light Support Bar equipped roofs.
- Require Light Power Cable.
- Sold in pairs.

**Fits: SSP**

**710005041**



#### BAJA DESIGNS SQUADRON SPORT LED LIGHTS

- Made by Baja Designs.
- 20 watt per spot producing 1,800 lumens.
- Equipped with 4 Cree XP-G2 LEDs per spot.
- Designed for installation onto Pre-Runner and Dune bumpers and/or Light Support Bar equipped roofs.
- Wide cornering light pattern designed specifically for cornering, dust and/or fog conditions.
- Require Light Power Cable.
- Sold in pairs.

**Fits: SSP**

**710004648**



# LONESTAR RACING ACCESSORIES FOR MAVERICK X3



## LONESTAR RACING FRONT BUMPER

- Made of 1.5" (3.8 cm) diameter steel tubing with durable powder coat finish with a 1/8" (3 mm) thick aluminum plate for added vehicle-front protection in extreme driving conditions.
- Sleek styling enhances the vehicle's race-inspired look.
- Not winch compatible.
- "Lonestar Racing for Can-Am" branded.

**Fits: SSP**

■ 715003914 - Black

■ 715004161 - Can-Am Red



## LONESTAR RACING REAR BUMPER

- Made of 1.5" (3.8 cm) diameter steel tubing with durable powder coat finish.
- Provides additional vehicle-rear bodywork and exhaust system protection in extreme driving conditions.
- Sleek styling enhances the vehicle's race-inspired look.
- Compatible with Lonestar Racing Spare Tire Holder and Lonestar Racing Rear Intrusion Bar.
- Not hitch compatible.
- "Lonestar Racing for Can-Am" branded.

**Fits: SSP**

■ 715003915 - Black

■ 715004162 - Can-Am Red



## LONESTAR RACING FRONT INTRUSION BAR

- Made of 1.5" (3.8 cm) diameter steel tubing with durable powder coat finish.
- Enhances the racing look of the vehicle.
- Compatible with Lonestar Racing Aluminum Roof.
- Not compatible with windshields, bimini roof and sport roof.
- "Lonestar Racing for Can-Am" branded.

**Fits: SSP**

■ 715003916 - Black

■ 715004163 - Can-Am Red



## LONESTAR RACING REAR INTRUSION BAR

- Made of 1.5" (3.8 cm) diameter steel tubing with durable powder coat finish.
- Sleek styling enhances the vehicle's race-inspired look.
- Required for the installation of the Lonestar Racing Spare Tire Holder.
- "Lonestar Racing for Can-Am" branded.

**Fits: SSP**

■ 715003918 - Black

■ 715004164 - Can-Am Red



## LONESTAR RACING ROCK SLIDERS

- Made of 1.5" (3.8 cm) diameter steel tubing with durable powder coat finish filled with 1/8" (3 mm) aluminum plate.
- Protects vehicle sides from large obstacles.
- Sleek styling enhances the vehicle's race-inspired look.
- "Lonestar Racing for Can-Am" branded.
- Sold in pairs.

**Fits: SSP (except MAX models)**

■ 715003921 - Black

■ 715004165 - Can-Am Red



### LONESTAR RACING SPARE TIRE HOLDER

- Made of 1.5" (3.8 cm) diameter steel tubing with durable powder coat finish.
- Adjustable height for different tire width and sizes.
- Requires Lonestar Racing Rear Bumper and Lonestar Racing Rear Intrusion Bar for installation.
- Not compatible with Pro Armor Quickshot Wheel Jack.
- Wheel not included.
- "Lonestar Racing for Can-Am" branded.

**Fits: SSP**

- 715003922 · Black
- 715004166 · Can-Am Red



### LONESTAR RACING 40" (102 CM) LED LIGHT BAR RACK

- Designed for use with 40" (102 cm) Baja Designs OnX6 Arc LED Light Bar.
- Enhances the vehicle's race-inspired look.
- Compatible with Aluminum Roof, Lonestar Racing Aluminum Roof and Sport Roof.
- Not compatible with Racing Side Mirrors.
- Lights sold separately.

**Fits: SSP**

**715003920**



### LONESTAR RACING LIGHT RACK

- Designed for use with Baja Designs XL80 LED Light and Baja Designs XL Sport LED Light.
- Accommodates up to two pairs of XL Lights.
- Compatible with Lonestar Racing Aluminum Roof, Aluminum Roof and Sport Roof.
- Not compatible with Racing Side Mirrors.
- Lights sold separately.

**Fits: SSP**

**715003948**

### LONESTAR RACING NUMBER PLATE HOLDER

- Includes a pair of sturdy aluminum number plates that mount on either side of the vehicle rear.
- Styling enhances the vehicle's race-inspired look while adding a personal touch.
- Black background.
- Not compatible with LinQ Pivoting Rack.
- Numbered decals are available through SCS Unlimited.
- "Lonestar Racing for Can-Am" branded.

**Fits: SSP**

**715003943**



### LONESTAR RACING FIRE EXTINGUISHER SUPPORT

- Quick release support that allows you to slide the fire extinguisher out in a matter of seconds in an emergency situation.
- Made of billet anodized black aluminum.
- Fits 1.85" (4.7 cm) tubing.
- Can be fixed everywhere on the cage.
- Provides you with the safety and security of having dependable emergency equipment on board.
- Comes with both billet mounts, quick-pull pin, mounting plate and 2 clamps.
- Fire extinguisher sold separately.
- "Lonestar Racing for Can-Am" branded.

**Fits: SSP**

**715003734**



Includes middle intrusion X bars for installation.



### LONESTAR RACING ALUMINUM ROOF

- 0.083" (2.1 mm) thick aluminum roof.
- Durable and lightweight.
- Enhances the vehicle's racing appearance thanks to an authentic sporty look combined with unique graphics.
- Offers you protection from the elements with a personalized touch.
- Includes middle intrusion bars for installation.
- Lower profile than other roofs.
- Compatible with Lonestar Racing Light Bar Racks.
- Not compatible with Light Support Bar and with Full Windshields.
- "Lonestar Racing for Can-Am" branded.
- Black with wrap kit.

**Fits: SSP (except MAX models)**

- 715003923 · Black
- 715004160 · Can-Am Red

